



# Welcome

**Councillor Martin Tennant**

**Cabinet Portfolio Holder for  
Major Projects and Property**



Funded by  
UK Government

POWERED BY  
**LEVELLING  
UP**

**RUSHMOOR**  
BOROUGH COUNCIL

# The Story so far

Karen Edwards  
Executive Director





# Shaping Farnborough & the Civic Quarter



Outline Planning permission for the Civic Quarter  
Regeneration Scheme (Masterplan) granted in February 2023

Civic Masterplan and Farnborough Leisure & Culture Hub

## What the community told us they'd like to see:

271 respondents



73.2%



Places to sit, meet  
and socialise

166 respondents



44.9%

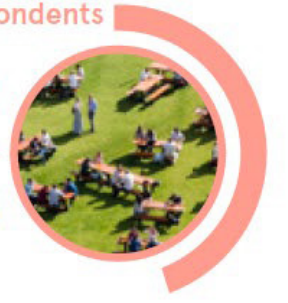


Places for people to come together:  
Town Square/Plaza

156 respondents



42.2%



Open grassed spaces

34.1%



Youth activities and  
older children's play

27.0%



New tree  
planting

22.7%



Areas of planting  
supporting local biodiversity

20.5%



Younger children's  
play

20.0%



Outdoor fitness and  
leisure



Funded by  
UK Government

POWERED BY  
**LEVELLING  
UP**

**RUSHMOOR**  
BOROUGH COUNCIL



# The Leisure & Culture Hub



*"More than the sum of its parts"*  
Bringing services together



Leisure Centre



Library



Culture



Rushmoor Borough Council



Rushmoor Voluntary Services



Citizens Advice



# Delivering Benefits For Our Community

- **Levelling up funding £20m from Central Government**  
- Council will need to fund the remainder (Currently £48m)
- **We hope that the new facility will deliver a range of outcomes including**
- **Increasing participation in physical activity, cultural and learning activity across all age groups.**
- **Improve the health and wellbeing of local communities.**
- **Deliver new and exciting opportunities and activities for our residents**
- **A sustainable building with low running costs that 'belongs to' and meets community needs**



FARNBOROUGH CIVIC QUARTER

# What is this session about?

- The first of a number of activities and events to seek community input to the delivery of our plans
- Update on the Leisure and Cultural Hub facilities, design and process for delivery
- Opportunity for you to provide feedback on what you hear and see and also input about the activities that you would like to see in the new building
- Tell us what you want from the regeneration or Farnborough as a whole
- 'Sign up' to receive future information and to get more involved







# Design Update



Funded by  
UK Government

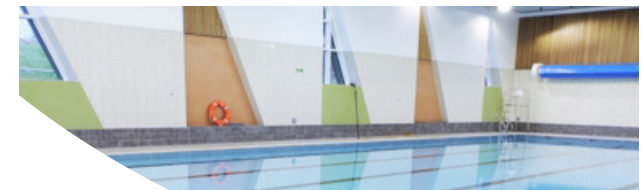
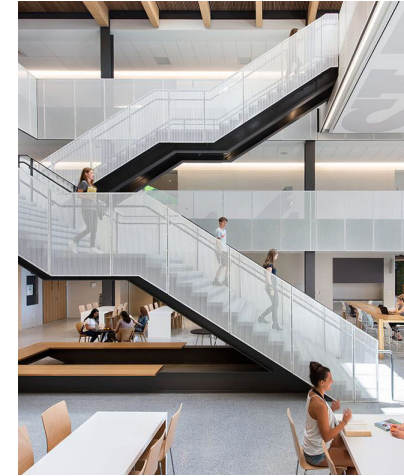
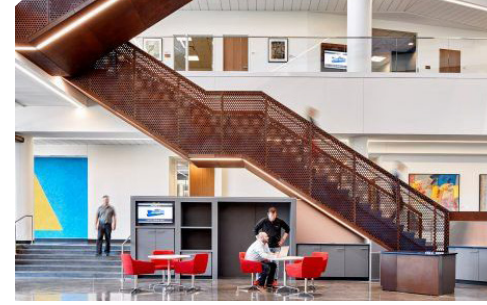
POWERED BY

**LEVELLING  
UP**

**RUSHMOOR**  
BOROUGH COUNCIL



# Team & Programme



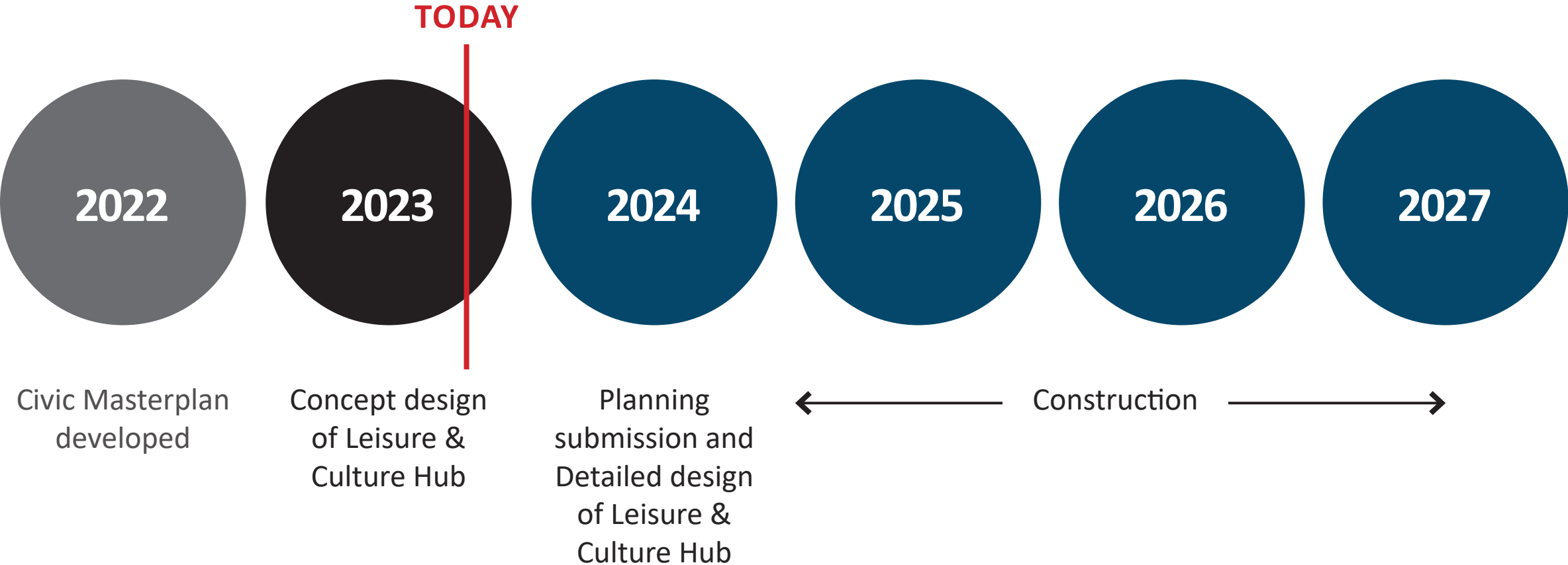


# Civic Quarter Masterplan



# Programme of development

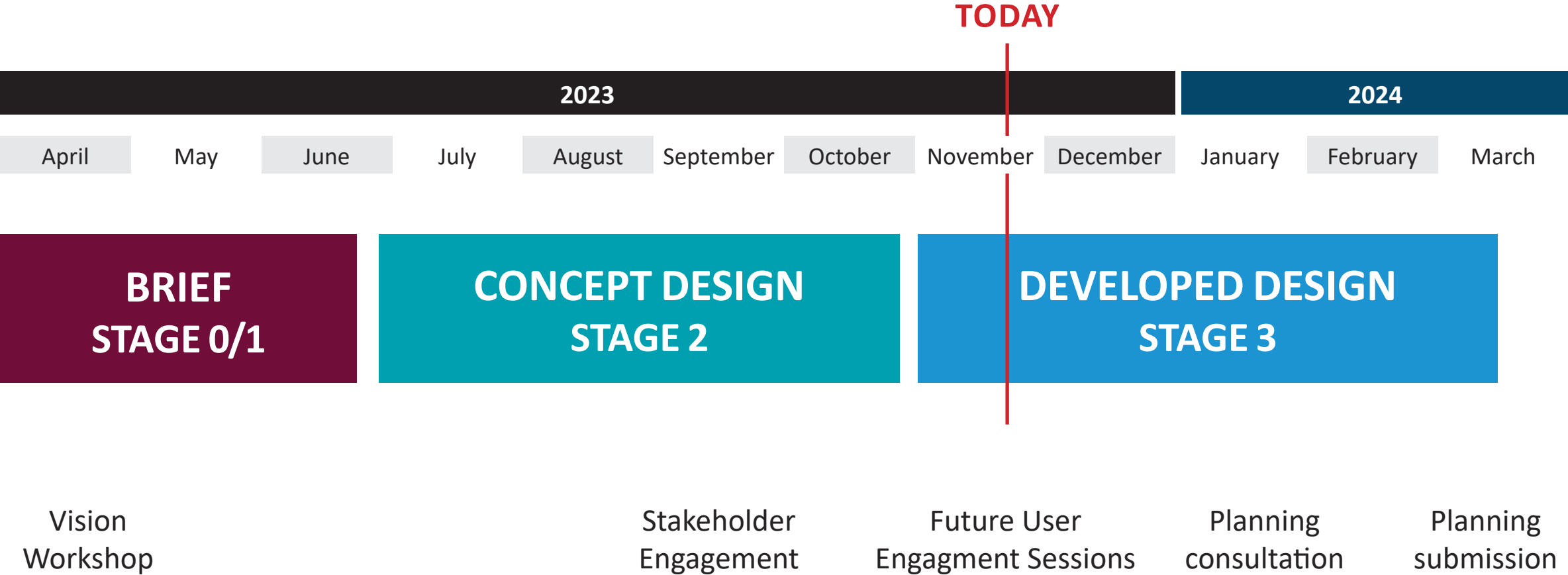
## Leisure & Culture Hub and Mobility Hub





# Design development - 2023 / 2024

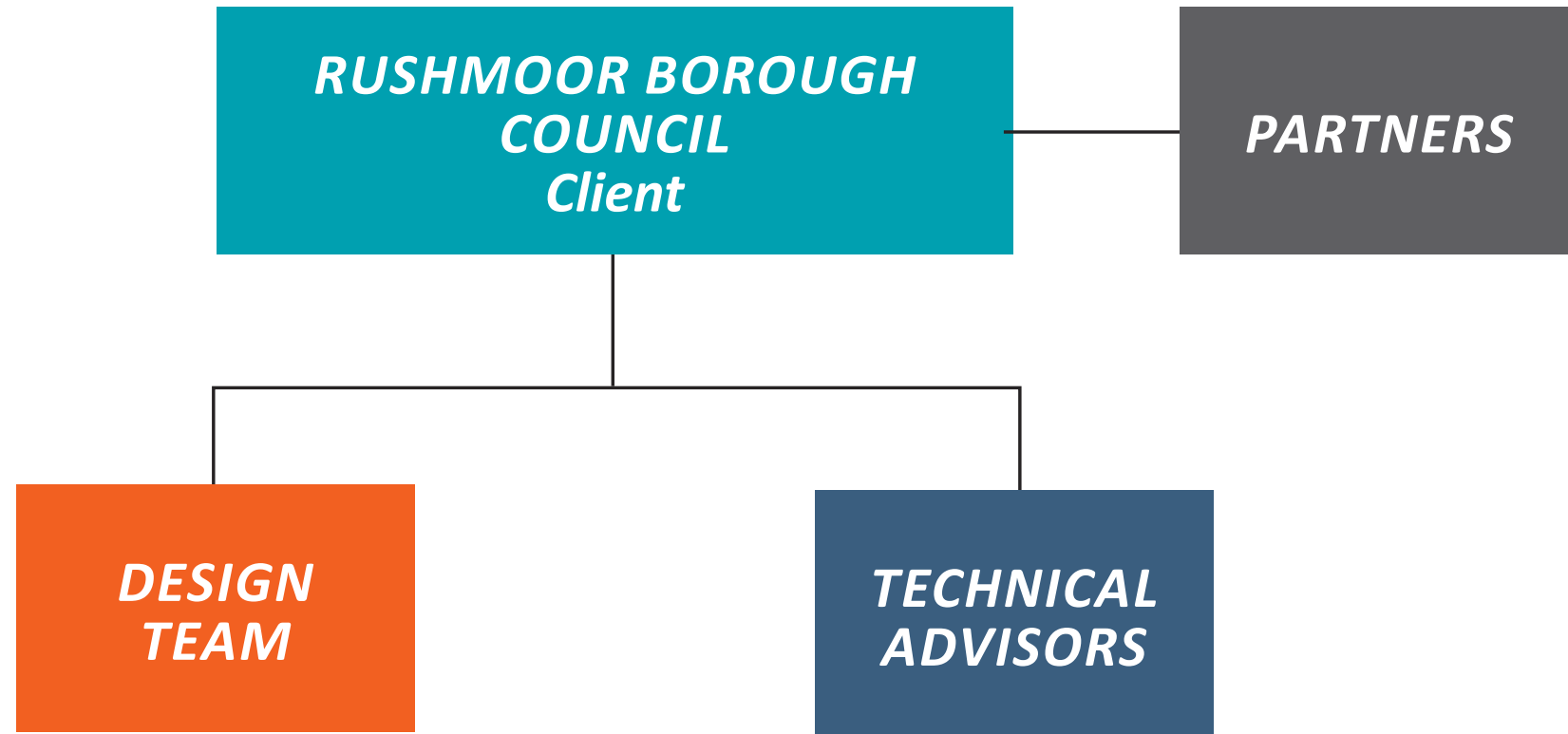
## Leisure & Culture Hub and Mobility Hub



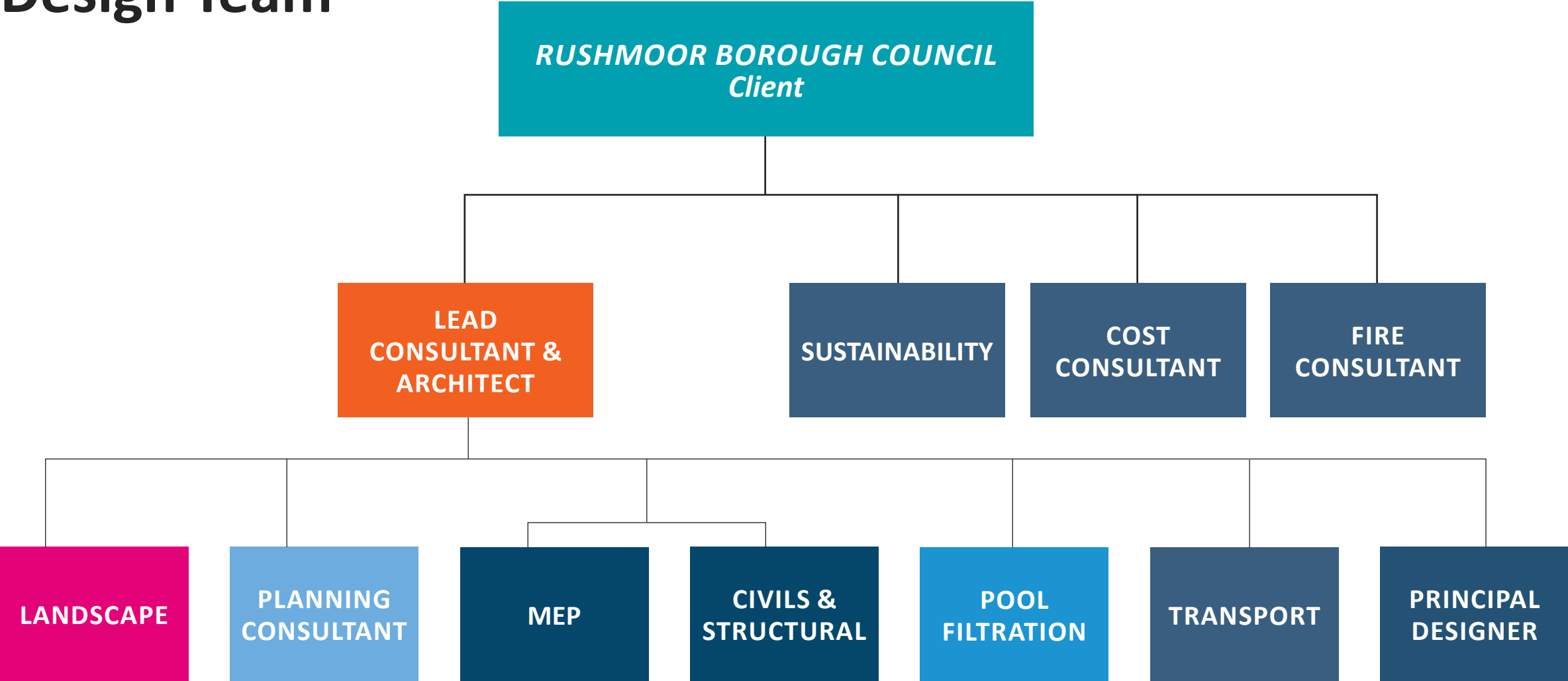




# Project Team

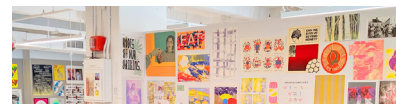
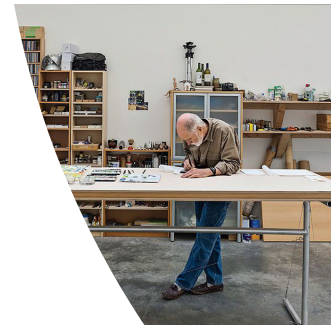


# Design Team





# Design Process



“ Farnborough Leisure & Culture Hub should be an  
**inclusive, community-first facility** which supports  
the **holistic health & wellbeing** of all users, through  
recreation, support and service provision.



# Strategic Objectives

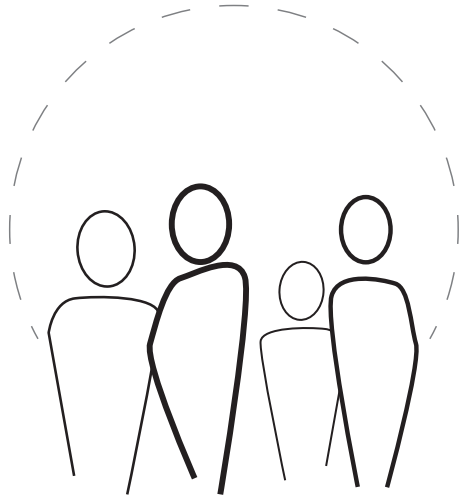
## *Key objectives for the scheme focus on:*

Creating an inclusive community facility which supports the health & wellbeing of all users. (Tier 1)

Providing a wider range of services to increase participation based on a model which is financially, socially and environmentally sustainable. (Tier 2&3)

Foundation factors that will make the scheme successful as part of the wider development in Farnborough. (Tier 4&5)

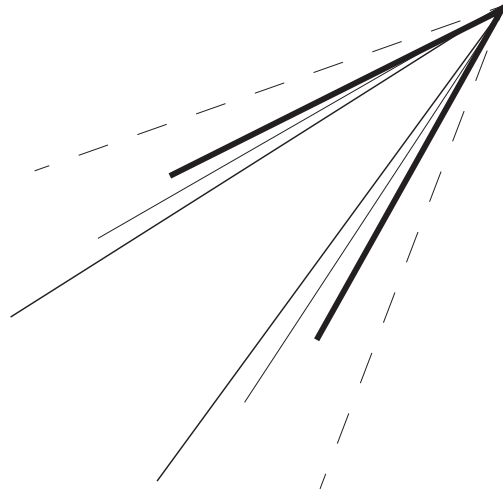




## ***A Place to Thrive***

The design centred around sustainability, well-being and comfort.

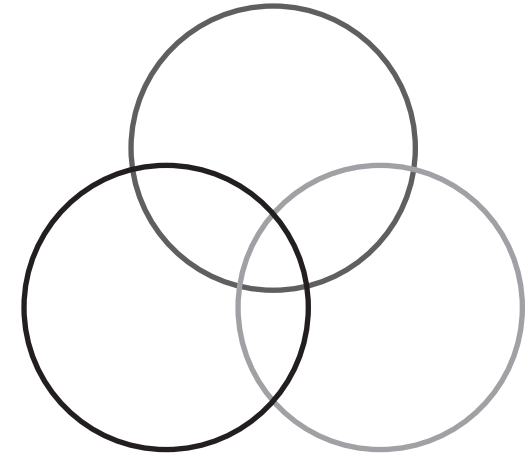
A place to suit the needs of the community for the present and the future.



## ***A Pioneer***

Support innovation in Arts & Culture, building on Farnborough's history of inventive spirit.

Set the ambition for sustainability on the Civic Masterplan.



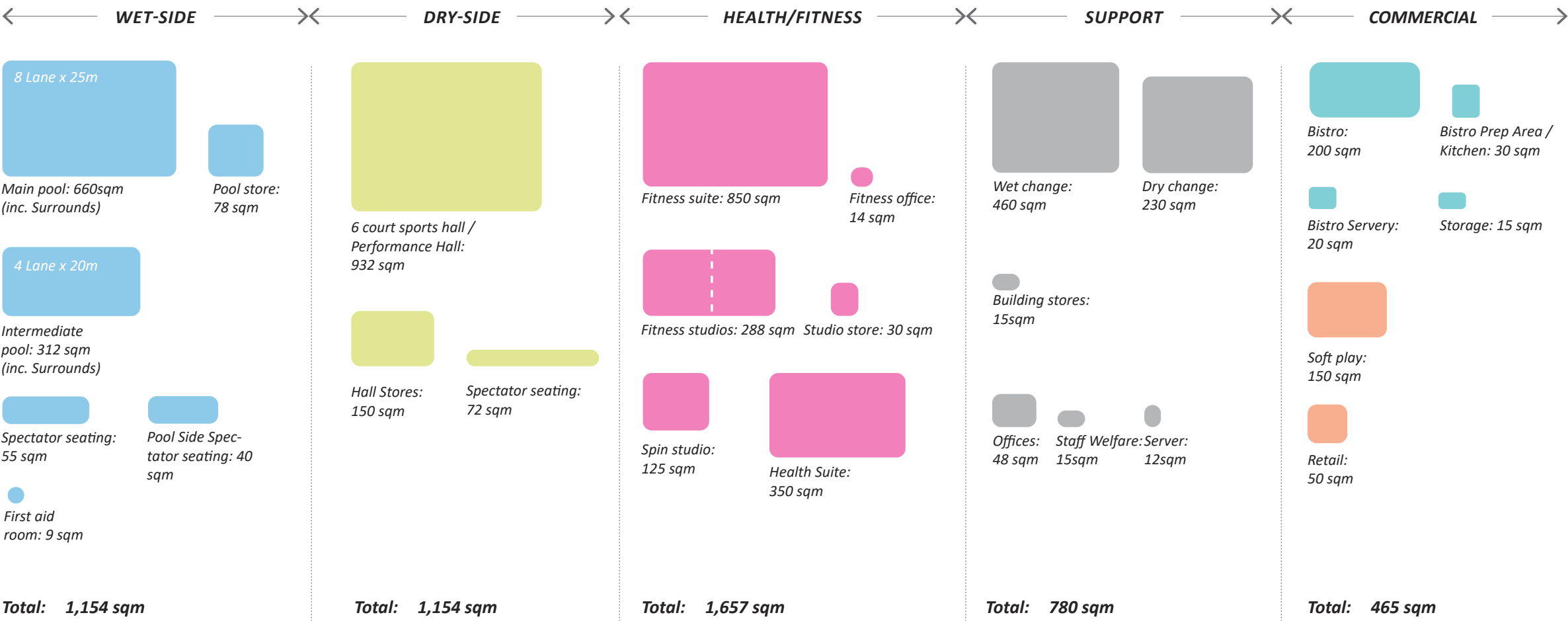
## ***Integration & Sharing***

A space for the community first

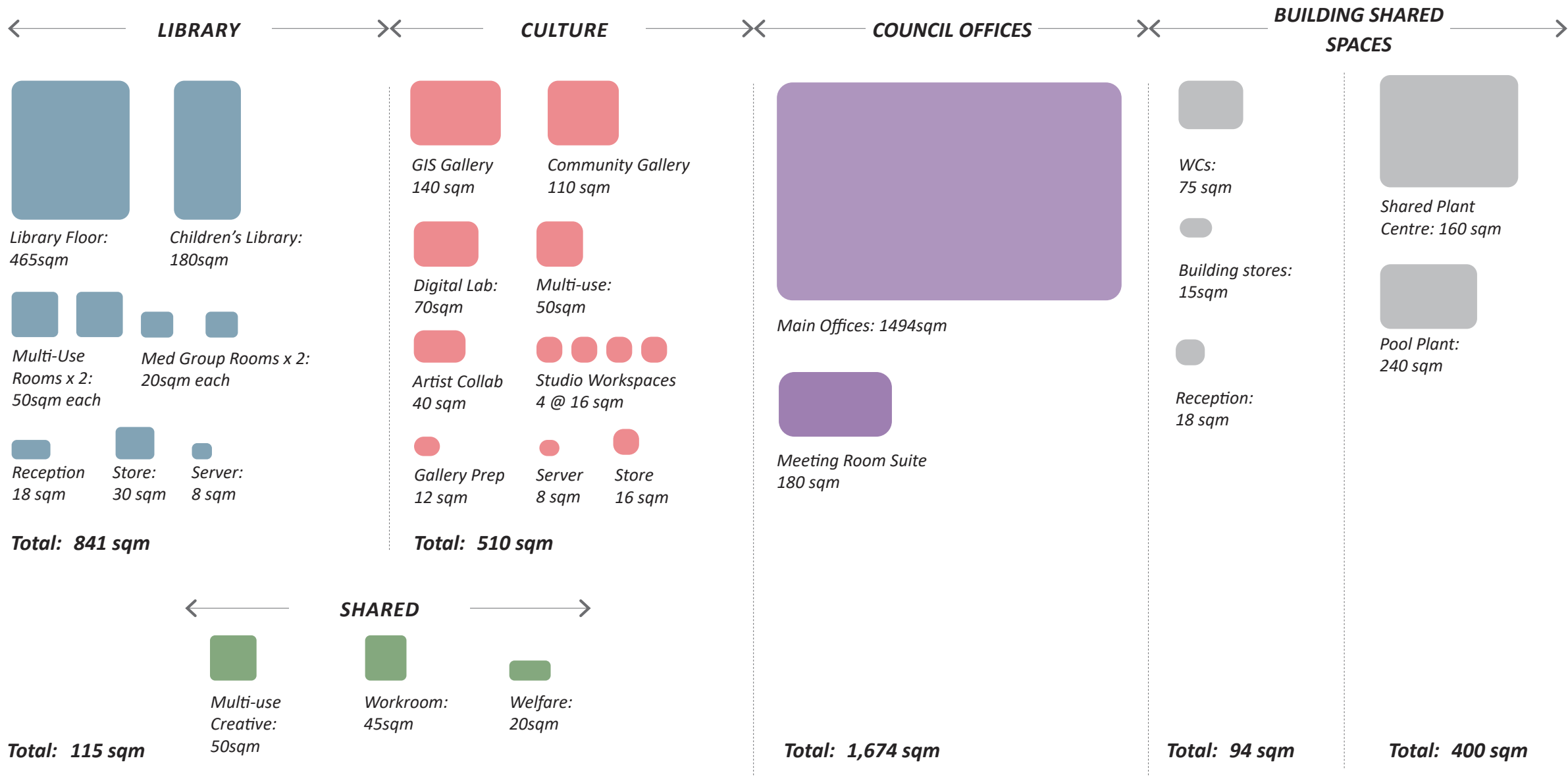
Aiming to increase the participation of people across Farnborough in Culture & Leisure Activities



# Spaces & Facilities



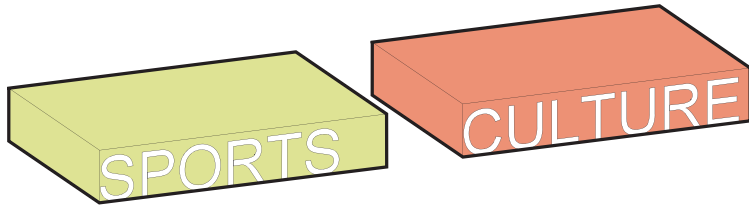
Note:  
• All areas are approximate only



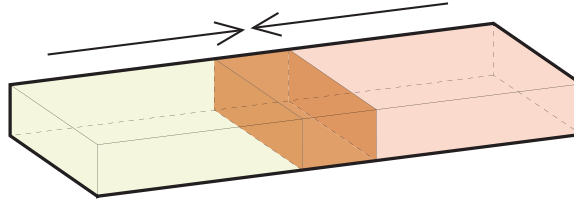


# Strategic Moves

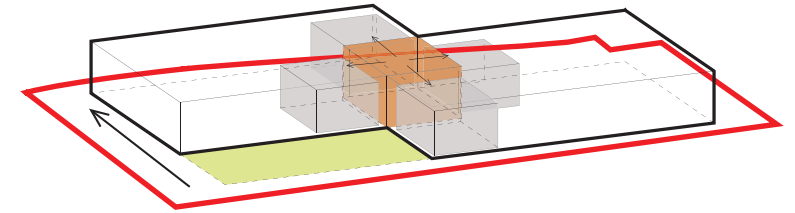
These synthesise Site Opportunities and Constraints with the Key Themes into a series of design and functional strategies which inform the design.



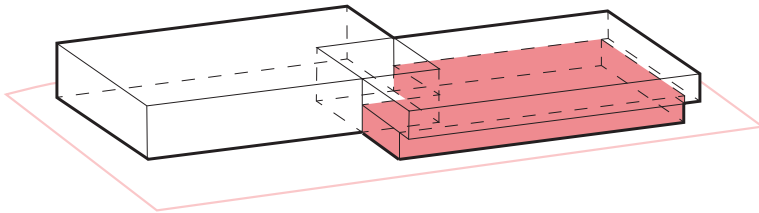
① **FUNCTION**



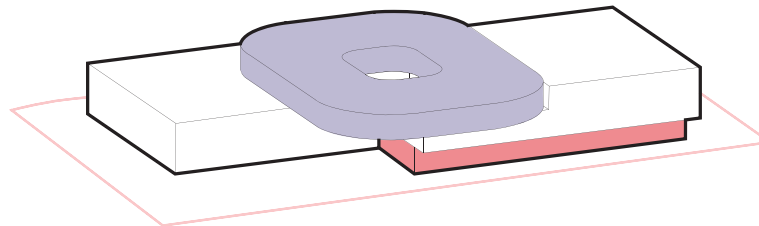
② **INTEGRATION**



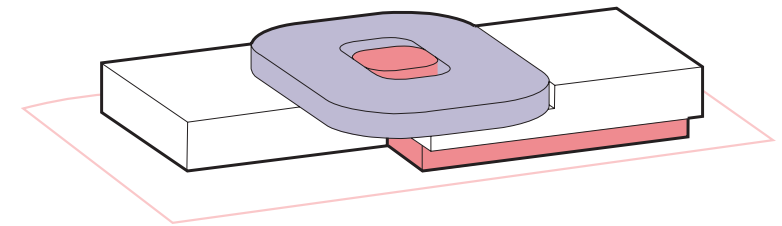
③ **ARTICULATION**



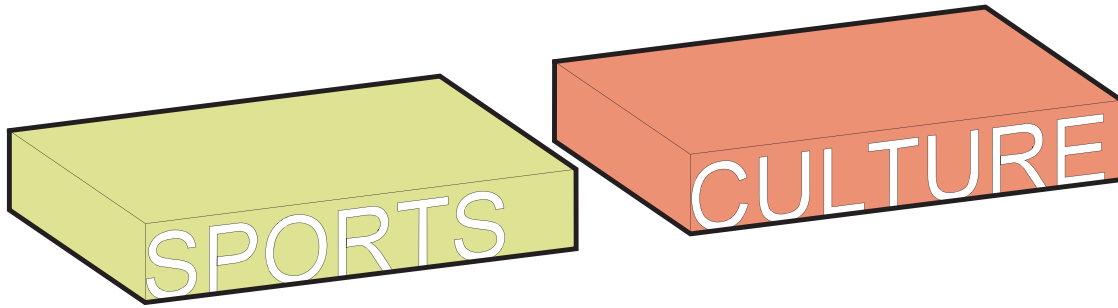
④ **EXPRESSION**



⑤ **IDENTITY**

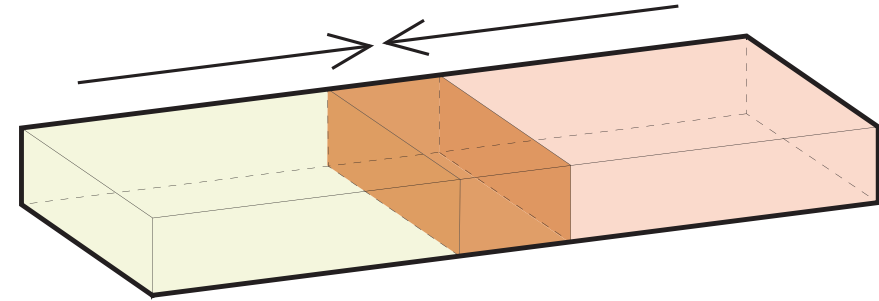


⑥ **CONNECTION**



### ① **FUNCTION**

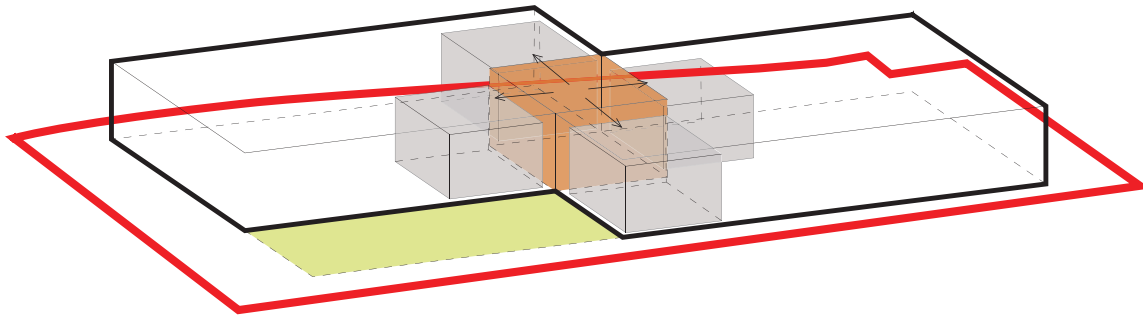
Articulating the two principal functions of the project in simple forms.



### ② **INTEGRATION**

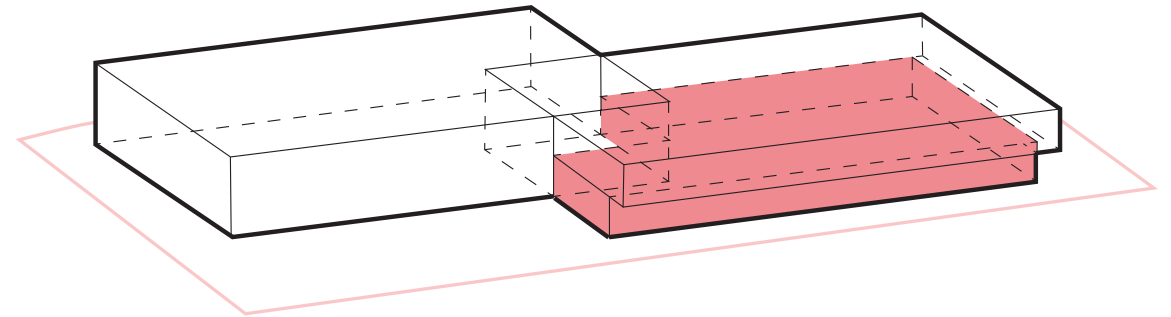
Overlapping functions to encourage sharing and support inclusion.





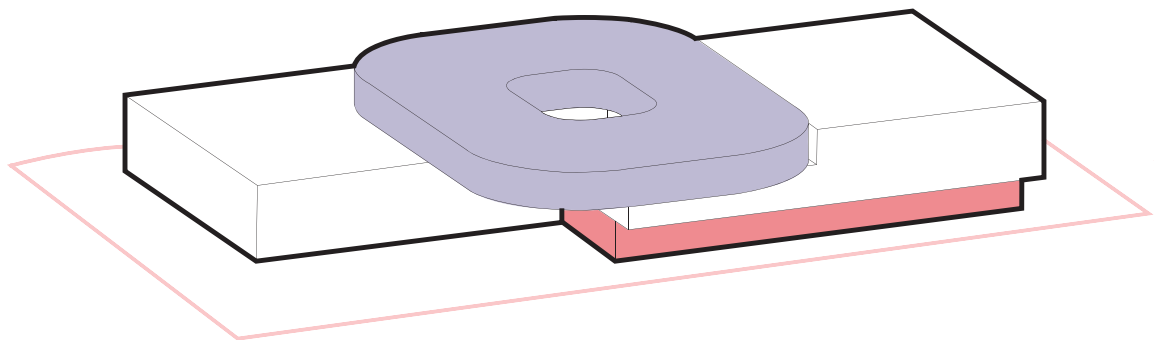
### ③ **ARTICULATION**

Create outdoor spaces and a central courtyard atrium.



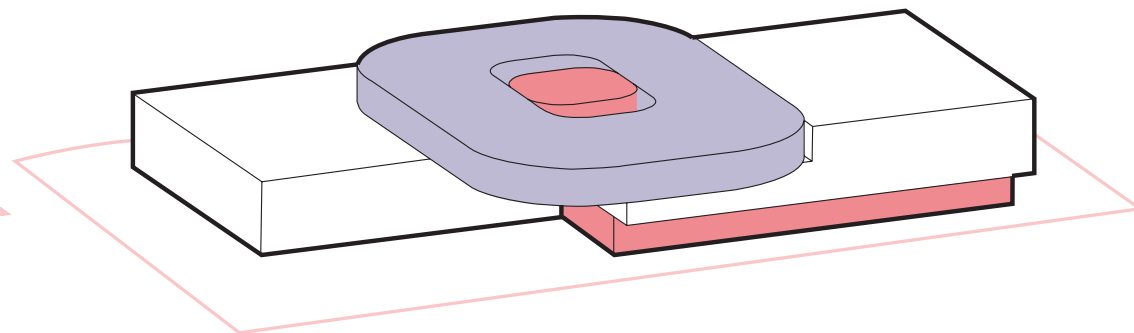
### ④ **EXPRESSION**

A clear identity for all core functions, as well as being part of a wider family.



### ⑤ **IDENTITY**

Highlight the unique nature of the building.  
A local beacon gives the building a clear  
identity within Farnborough.

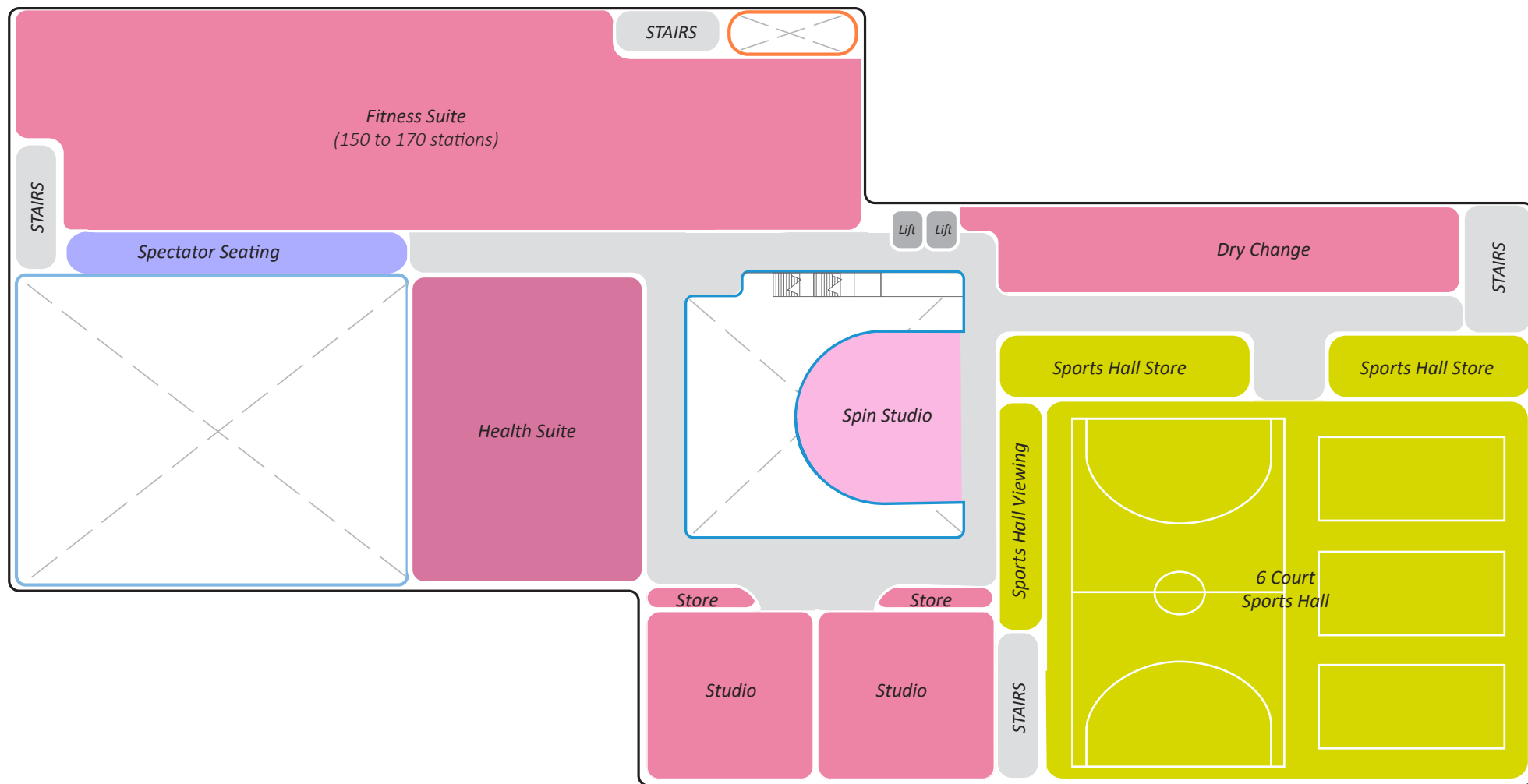


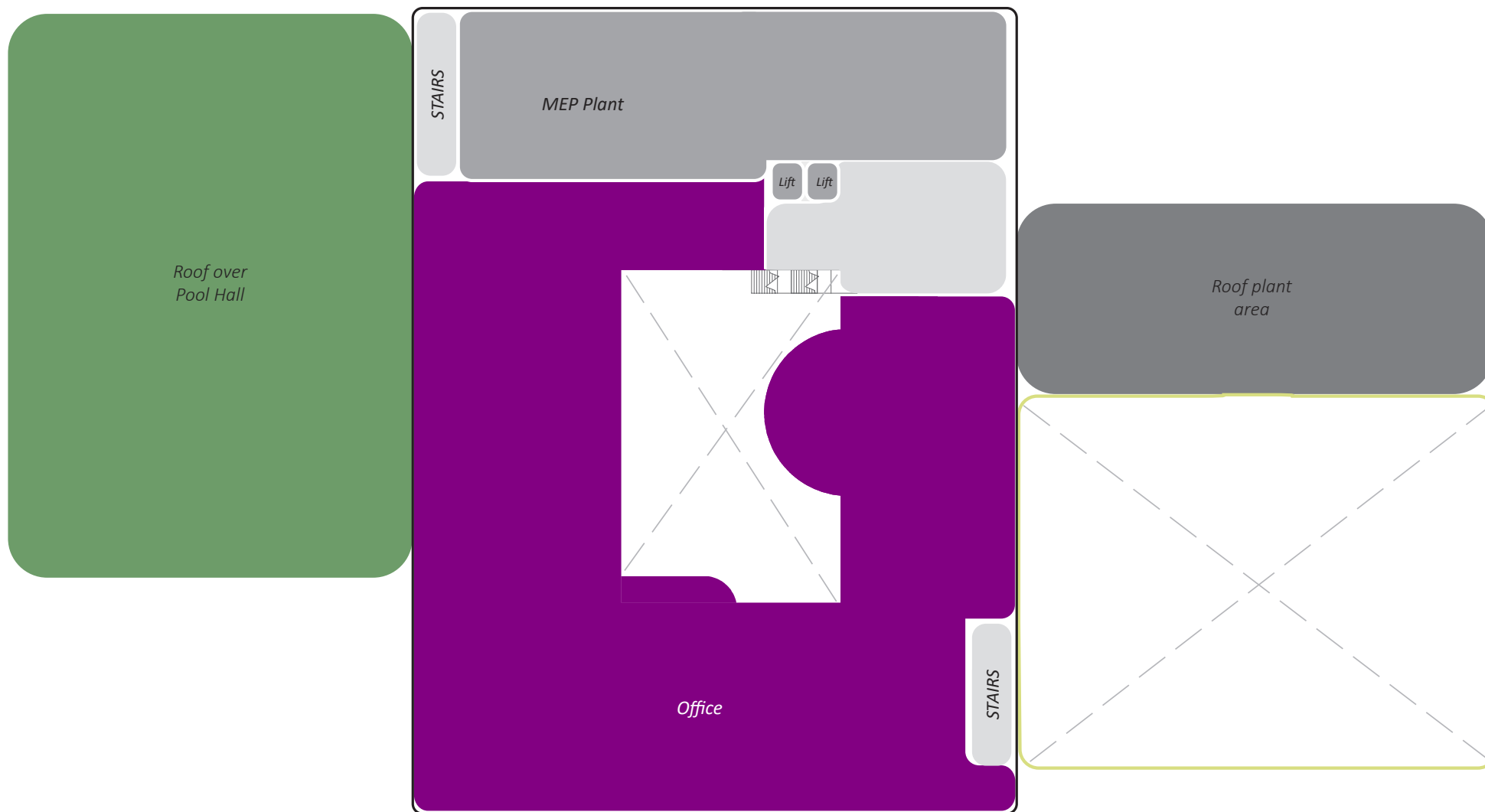
### ⑥ **CONNECTION**

Use the courtyard as space where  
people and activity come together  
to create a truly community facility.









# Today's Event

