

St Mark's ward information

Last updated: October 2024

Produced by: Risk, Performance & Procurement

Contact: performance@rushmoor.gov.uk

Contents	Page
Local democracy	1
Map of St Mark's	2
Resident survey results	3
Ward population and makeup 2021	4
Deprivation breakdown	7

Local democracy

Rushmoor Borough Council ward councillors for St Mark's:

Member	Party	Year elected
Councillor Leola Card	Liberal Democrats	2024
Councillor Thomas Mitchell	Liberal Democrats	2023
Councillor Craig Card	Liberal Democrats	2022

Member(s) of the County Council for St Mark's ward:

Member	Party	Year elected
County Councillor Adam Jackman	Conservative	2021

Member of Parliament for Aldershot Constituency:

Member of Parliament	Party	Year elected
Alex Baker	Labour	2024

Election Turnout

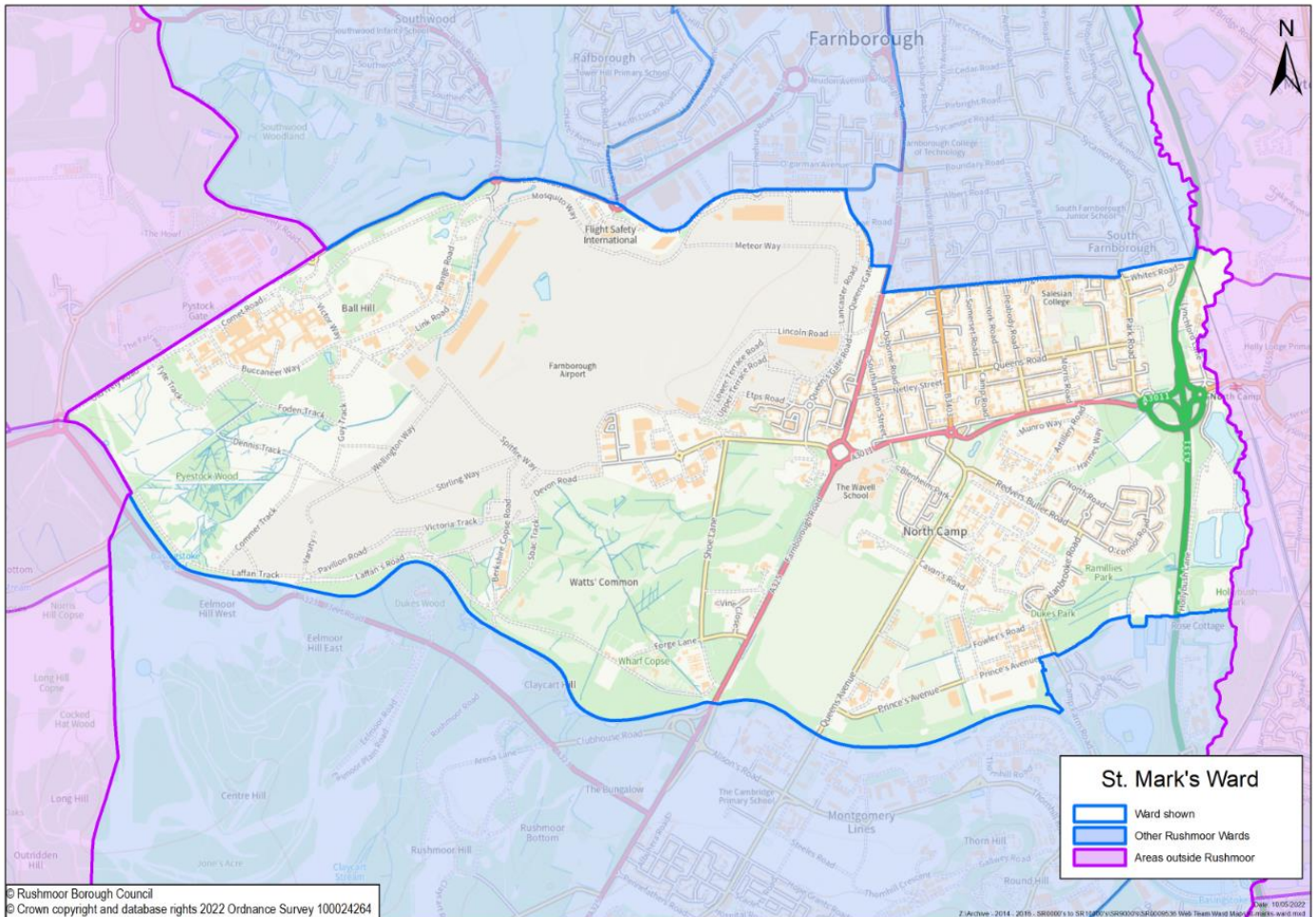
Date	Type	Election Turnout for St Mark's ward
2 May 2024	Local elections	29.6%

More information can be found on Rushmoor's web site at

<https://www.rushmoor.gov.uk/your-council/elections-and-voting/polling-stations-and-wards/st-mark-s-ward/>

Map of St Mark's

St Mark's ward encompasses North Camp, as well as Farnborough Aerodrome and the military land to the north of the Basingstoke Canal.



Resident survey results

The last Rushmoor Borough Council residents' survey was carried out in 2024, the full results are available on our [website](#). The survey was an online survey and 1,686 surveys were returned, in total 99 residents in St Mark's ward completed the survey. Although not all wards had a representative number of responses the results can give an indication to what respondents in a ward think.

Below is a summary of the results for St Mark's ward.

Top five factors that are important in making somewhere good to live and need improving by ward

Here are the top things that St Mark's respondents think is important in making somewhere good to live and need improving.

Important in making somewhere good	Top five	Need improving
The level of crime	1st	Road and pavement repairs
Health services	2nd	Sports and leisure facilities
Road and pavement repairs	3rd	Clean streets
Clean streets	4th	Activities for teenagers
Access to nature	5th	The level of traffic congestion

Satisfaction with Rushmoor (Aldershot and Farnborough) as a place to live (with 1 being very dissatisfied and 10 being very satisfied)

	All responses	Farnborough	St Mark's
Average score	5.50	5.55	5.96

Respondents from St Mark's ward have a higher satisfaction with Rushmoor as a place to live than respondents from Farnborough, and all respondents to the survey.

How strongly do you feel you belong to your local area? (very and fairly strongly)

	All responses	Farnborough	St Mark's
Average score	51.9%	51.5%	64.6%

Respondents from St Mark's ward feel more that they belong to their local area than those from Farnborough, and all those who responded to the survey.

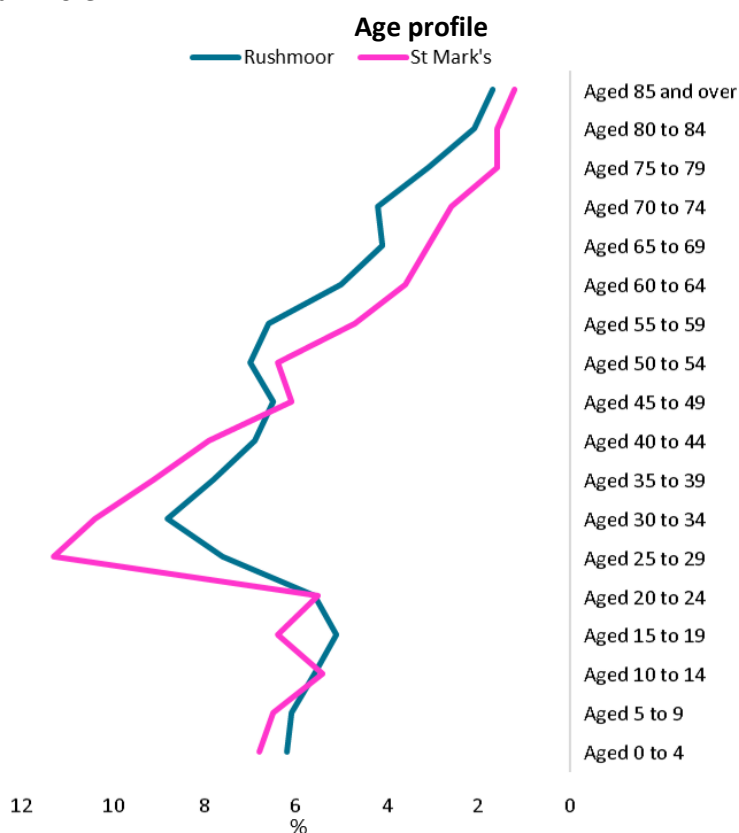
Ward population and makeup 2021

The following data is from the 2021 Census. The Office of National Statistics calculate ward data by aggregating data for small areas to best fit the ward boundaries, and therefore data may differ slightly from other ward data.

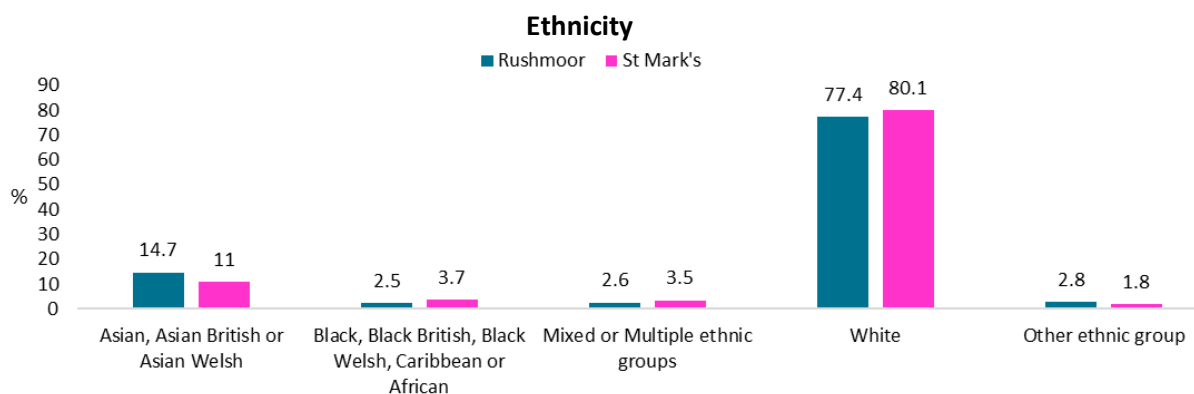
- Population:**

2021 Census	Population	Total households	Female %	Male %
St Mark's	8,500	3,400	46.3	53.7

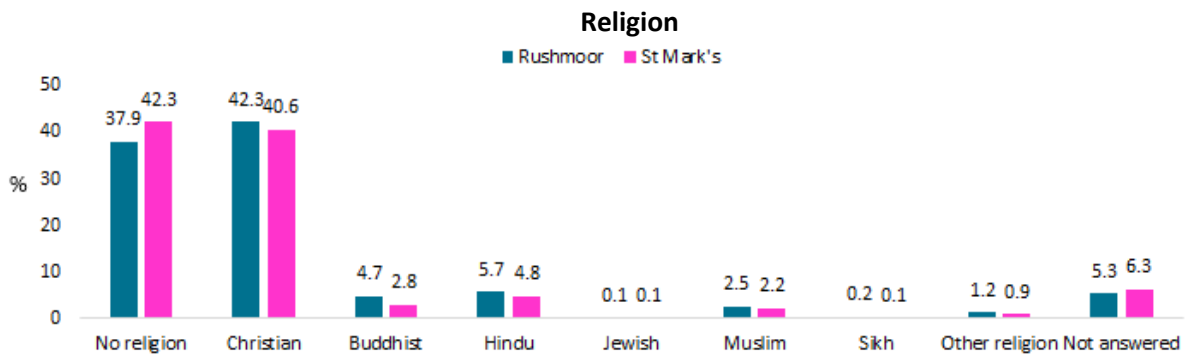
- Age:** St Mark's has a higher percentage of 25 to 44 year olds, when compared to Rushmoor as a whole.



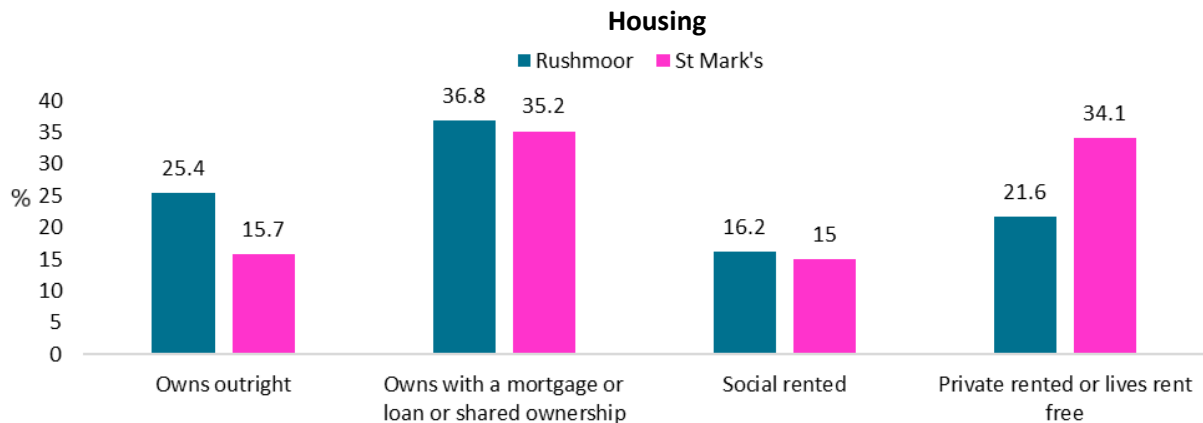
- Ethnicity:** There are slightly less Asian residents in St. Mark's, when compared to Rushmoor as a whole.



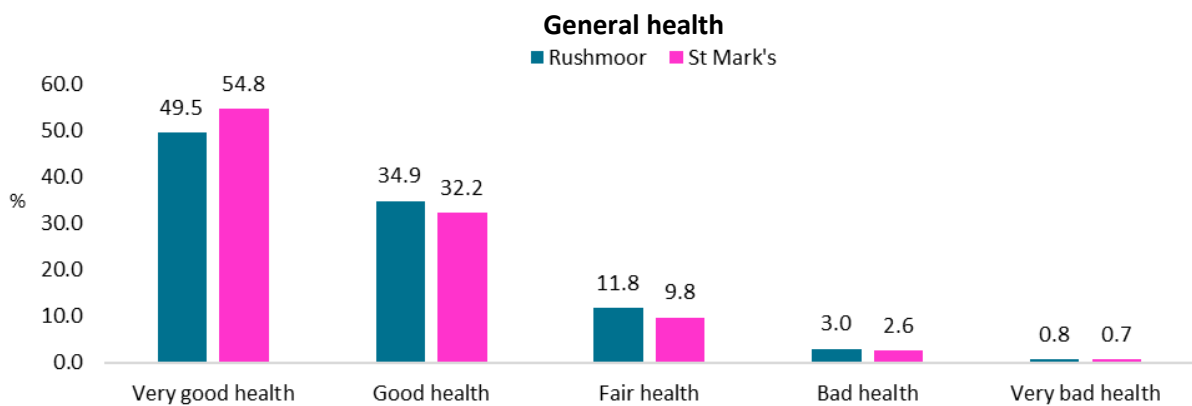
- **Religion:** St Mark's has a slightly higher percentage of residents with no religion, when compared to Rushmoor as a whole.



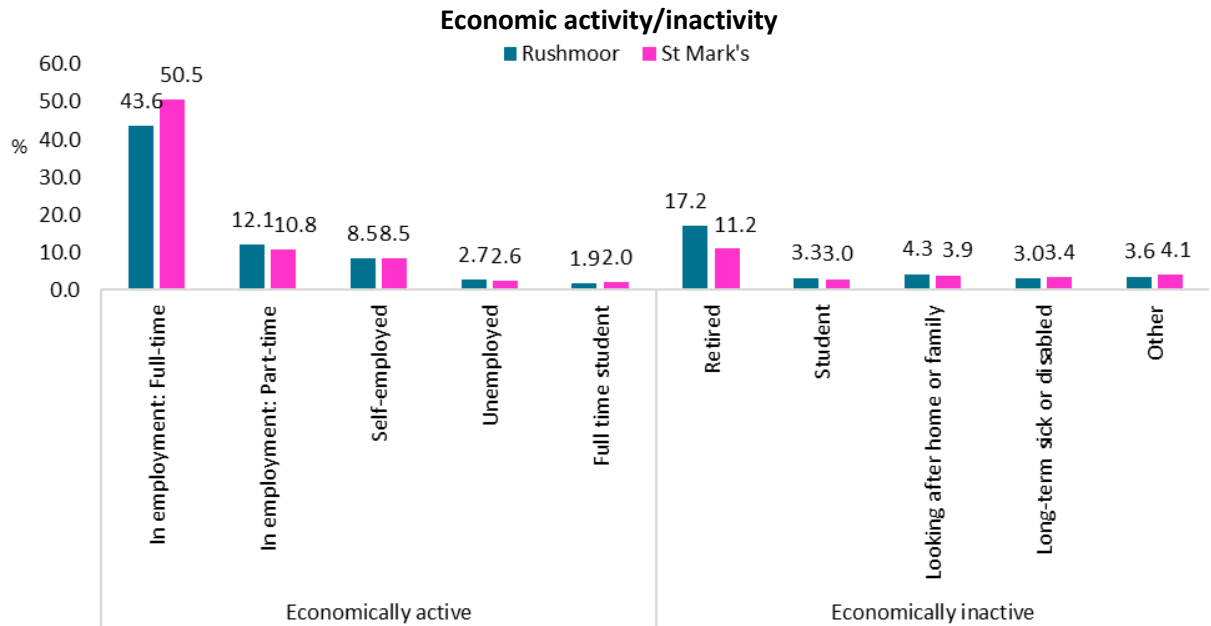
- **Housing:** A lower percentage of residents in St Mark's own their homes outright, and a higher percentage rent their homes from private landlords (this will include Army housing), when compared to Rushmoor as a whole



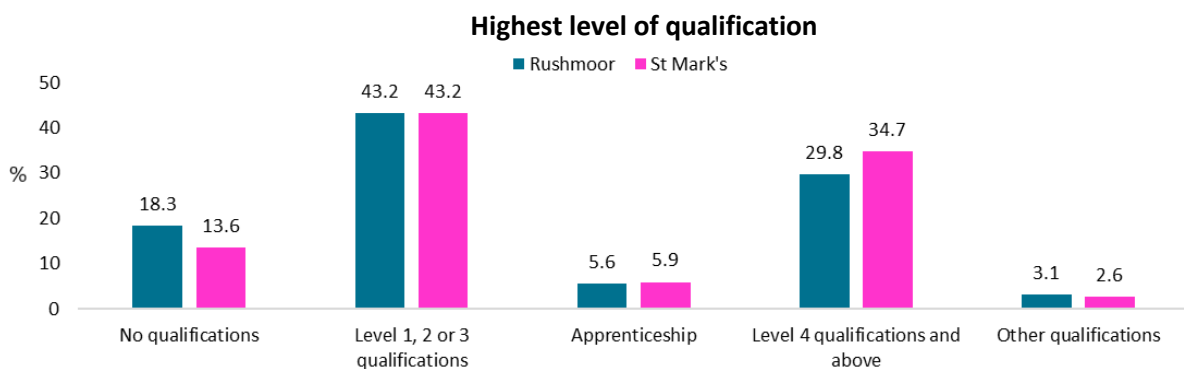
- **Health:** A slightly higher percentage of St Mark's residents reported that they were in very good health, when compared with Rushmoor as a whole.



- **Economic activity/inactivity:** St Mark's ward has a higher percentage of full time employed residents and a slightly lower percentage of retired residents, when compared to Rushmoor as a whole.



- **Qualifications:** A slightly higher percentage of St Mark's residents have level 4 and above qualification and less have no qualifications, when compared to Rushmoor as a whole.

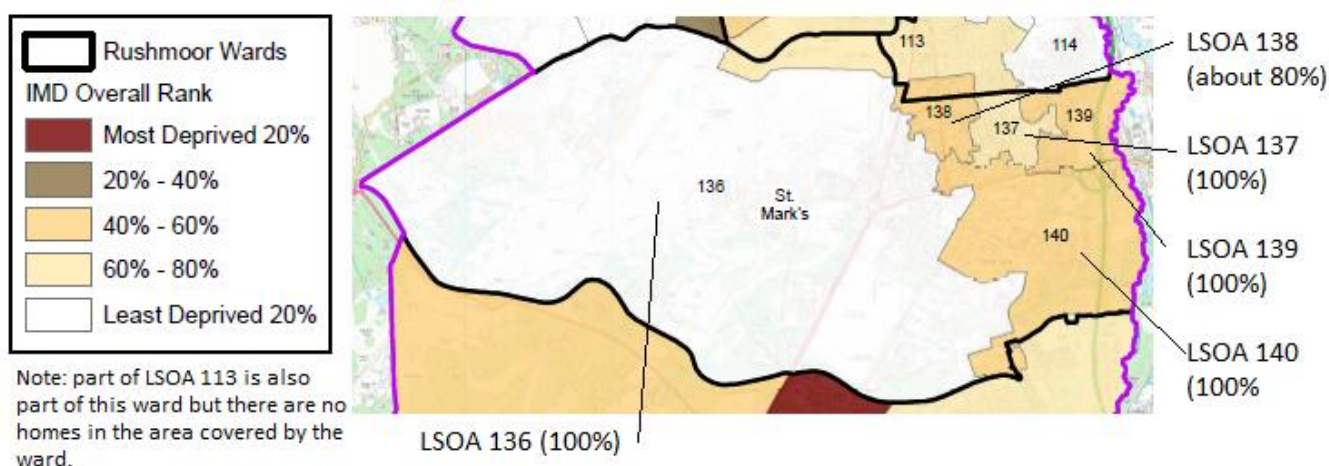


- Level 1 and entry level qualifications: 1 to 4 GCSEs grade A* to C , Any GCSEs at other grades, O levels or CSEs (any grades), 1 AS level, NVQ level 1, Foundation GNVQ, Basic or Essential Skills
- Level 2 qualifications: 5 or more GCSEs (A* to C or 9 to 4), O levels (passes), CSEs (grade 1), School Certification, 1 A level, 2 to 3 AS levels, VCEs, Intermediate or Higher Diploma, Welsh Baccalaureate Intermediate Diploma, NVQ level 2, Intermediate GNVQ, City and Guilds Craft, BTEC First or General Diploma, RSA Diploma
- Apprenticeship
- Level 3 qualifications: 2 or more A levels or VCEs, 4 or more AS levels, Higher School Certificate, Progression or Advanced Diploma, Welsh Baccalaureate Advance Diploma, NVQ level 3; Advanced GNVQ, City and Guilds Advanced Craft, ONC, OND, BTEC National, RSA Advanced Diploma
- Level 4 qualifications and above: degree (BA, BSc), higher degree (MA, PhD, PGCE), NVQ level 4 to 5, HNC, HND, RSA Higher Diploma, BTEC Higher level, professional qualifications (for example, teaching, nursing, accountancy)
- Other: vocational or work-related qualifications, other qualifications achieved in England or Wales, qualifications achieved outside England or Wales (equivalent not stated or unknown)

Deprivation breakdown

The Government's Index of Multiple Deprivation (IMD) 2019 provides a relative deprivation score for each small area in England, it covers a range of economic, social and housing issues. The overall score is calculated using data from seven domains. Most of indicator data has come from 2015 and 2016 and some of the data is from the 2011 Census. The Indices of Deprivation cover geographical areas that are called Lower-layer Super Output Area level (LSOA), of which there are 32,844 in the country. There are a total of 58 LSOAs in Rushmoor.

Unfortunately, LSOAs and the council's wards do not exactly line up. In St Mark's ward there are all or part of five LSOAs. The following map shows the number of the LSOAs in St Mark's ward and the approximate percentage of the LSOA in the ward. Each LSOA is ranked in order against all other LSOA in the country, where 1 is the most deprived and 32,844 is the least deprived.



LSOA Code	Approx % in Ward	Index of Multiple Deprivation (IMD) 2019	Income	Employment	Education, Skills and Training	Health Deprivation and Disability	Crime	Barriers to Housing and Services	Living Environment
136	100%	28933	26589	30170	21809	24773	25818	20157	17832
137	100%	20582	22826	17754	18344	14971	10321	25809	17222
139	100%	15882	15263	16733	12605	9232	21172	15914	14054
140	100%	15764	15284	20465	12446	10360	22473	5538	18475
138	80%	17376	14349	12118	22612	14166	18422	18285	18529

For comparison purposes below is the mean average results for a LSOA in Rushmoor

Average	19887	18826	21461	16538	17925	16645	14986	21641
---------	-------	-------	-------	-------	-------	-------	-------	-------

St. Mark's ward has no areas of multiple deprivation (in the 20% most deprived). LSOA 140 has a pocket of deprivation for the Barriers to Housing and Services domain.