

St Mark's ward information

Last updated: May 2026

Produced by: Policy, Strategy and Transformation

Contact: performance@rushmoor.gov.uk

| Contents | Page |
|---------------------------------|------|
| Local democracy | 1 |
| Map of St Mark's | 2 |
| Resident survey results | 3 |
| Ward population and makeup 2021 | 4 |
| Deprivation breakdown | 7 |

Local democracy

Rushmoor Borough Council ward councillors for St Mark's:

| Member | Party | Year elected |
|----------------------------|-------------------|--------------|
| Councillor Leola Card | Liberal Democrats | 2024 |
| Councillor Thomas Mitchell | Liberal Democrats | 2023 |
| Councillor Craig Card | Liberal Democrats | 2026 |

Member(s) of the County Council for St Mark's ward:

| Member | Party | Year elected |
|-----------------------------|--------------|--------------|
| County Councillor Roz Chadd | Conservative | 2026 |

Member of Parliament for Aldershot Constituency:

| Member of Parliament | Party | Year elected |
|----------------------|--------|--------------|
| Alex Baker | Labour | 2024 |

Election Turnout

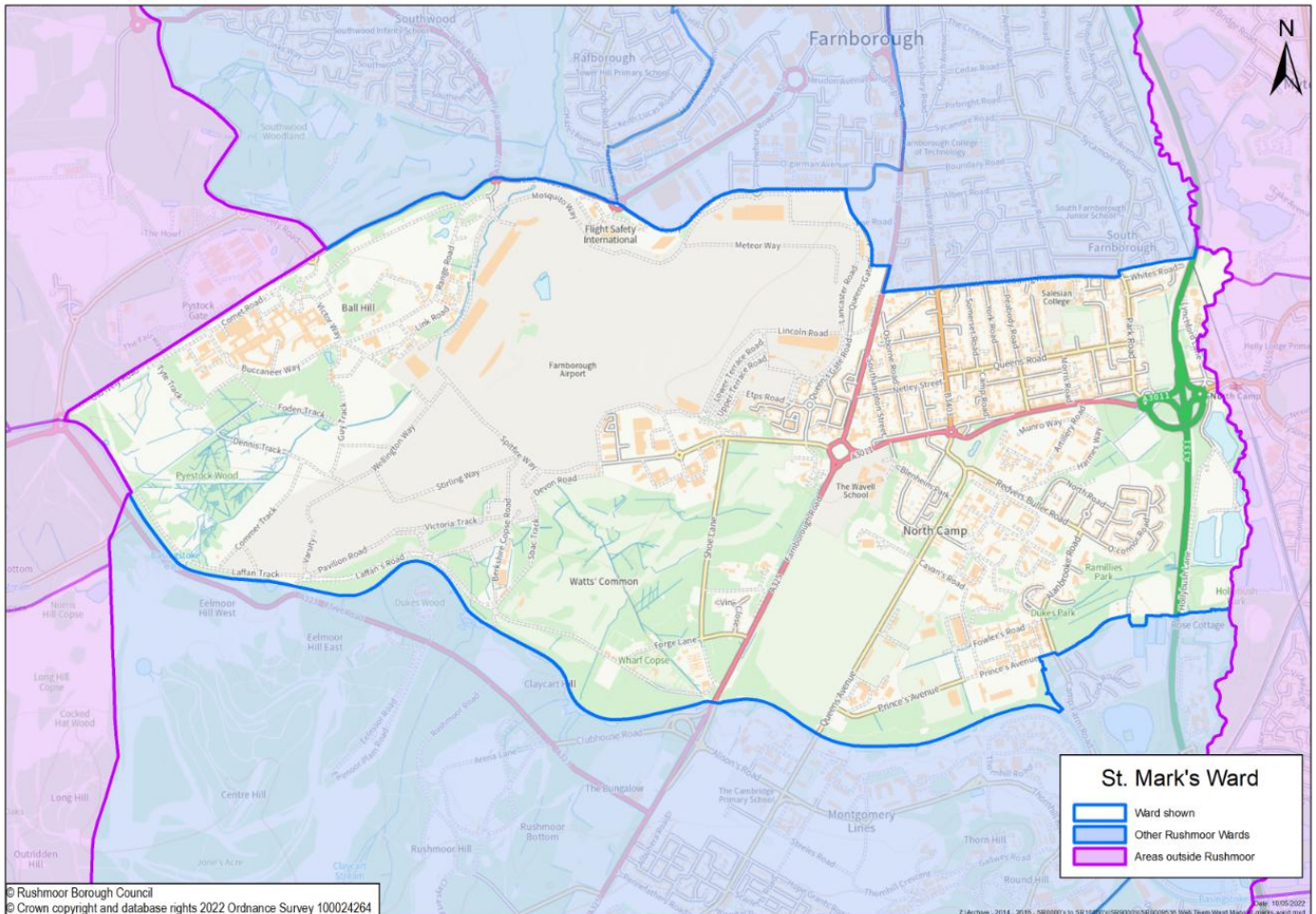
| Date | Type | Election Turnout for St Mark's ward |
|------------|-----------------|-------------------------------------|
| 7 May 2026 | Local elections | 38.9% |

More information can be found on Rushmoor's web site at

<https://www.rushmoor.gov.uk/your-council/elections-and-voting/polling-stations-and-wards/st-mark-s-ward/>

Map of St Mark's

St Mark's ward encompasses North Camp, as well as Farnborough Aerodrome and the military land to the north of the Basingstoke Canal.



Resident survey results

The last Rushmoor Borough Council residents' survey was carried out in 2024, the full results are available on our [website](#). The survey was an online survey and 1,686 surveys were returned, in total 99 residents in St Mark's ward completed the survey. Although not all wards had a representative number of responses the results can give an indication to what respondents in a ward think.

Below is a summary of the results for St Mark's ward.

Top five factors that are important in making somewhere good to live and need improving by ward

Here are the top things that St Mark's respondents think is important in making somewhere good to live and need improving.

| Important in making somewhere good | Top five | Need improving |
|------------------------------------|----------|---------------------------------|
| The level of crime | 1st | Road and pavement repairs |
| Health services | 2nd | Sports and leisure facilities |
| Road and pavement repairs | 3rd | Clean streets |
| Clean streets | 4th | Activities for teenagers |
| Access to nature | 5th | The level of traffic congestion |

Satisfaction with Rushmoor (Aldershot and Farnborough) as a place to live (with 1 being very dissatisfied and 10 being very satisfied)

| | All responses | Farnborough | St Mark's |
|---------------|---------------|-------------|-----------|
| Average score | 5.50 | 5.55 | 5.96 |

Respondents from St Mark's ward have a higher satisfaction with Rushmoor as a place to live than respondents from Farnborough, and all respondents to the survey.

How strongly do you feel you belong to your local area? (very and fairly strongly)

| | All responses | Farnborough | St Mark's |
|---------------|---------------|-------------|-----------|
| Average score | 51.9% | 51.5% | 64.6% |

Respondents from St Mark's ward feel more that they belong to their local area than those from Farnborough, and all those who responded to the survey.

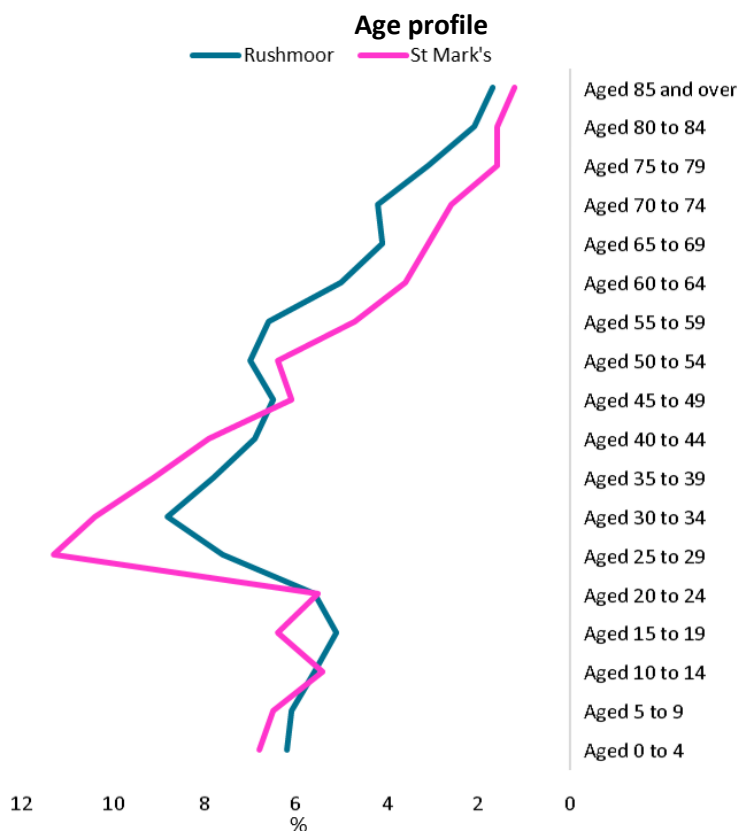
Ward population and makeup 2021

The following data is from the 2021 Census. The Office of National Statistics calculate ward data by aggregating data for small areas to best fit the ward boundaries, and therefore data may differ slightly from other ward data.

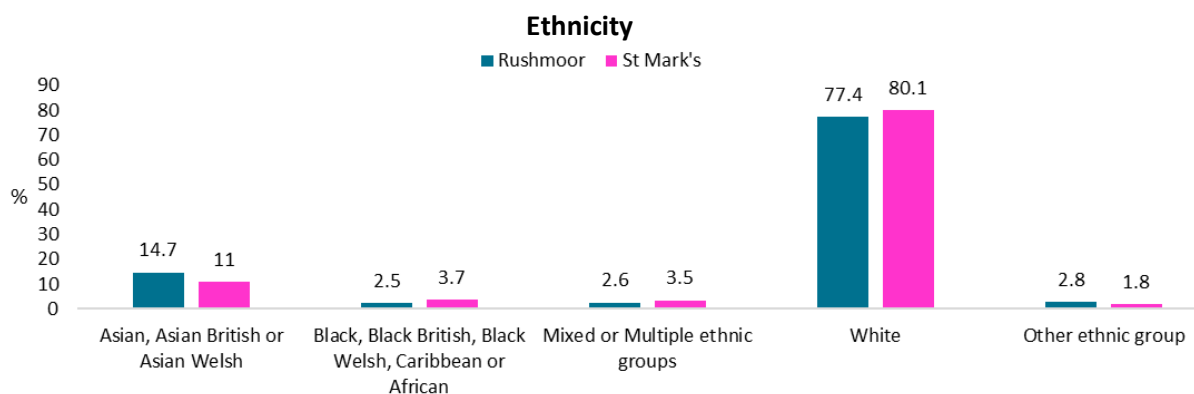
- **Population:**

| 2021 Census | Population | Total households | Female % | Male % |
|-------------|------------|------------------|----------|--------|
| St Mark's | 8,500 | 3,400 | 46.3 | 53.7 |

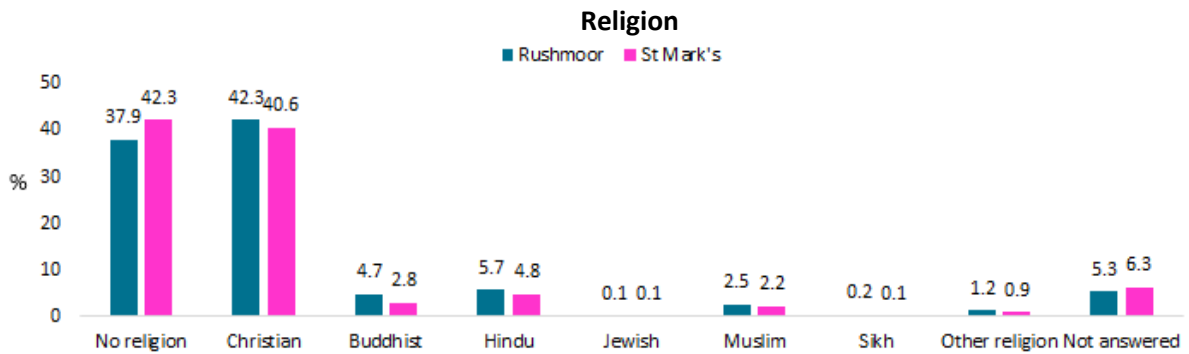
- **Age:** St Mark's has a higher percentage of 25 to 44 year olds, when compared to Rushmoor as a whole.



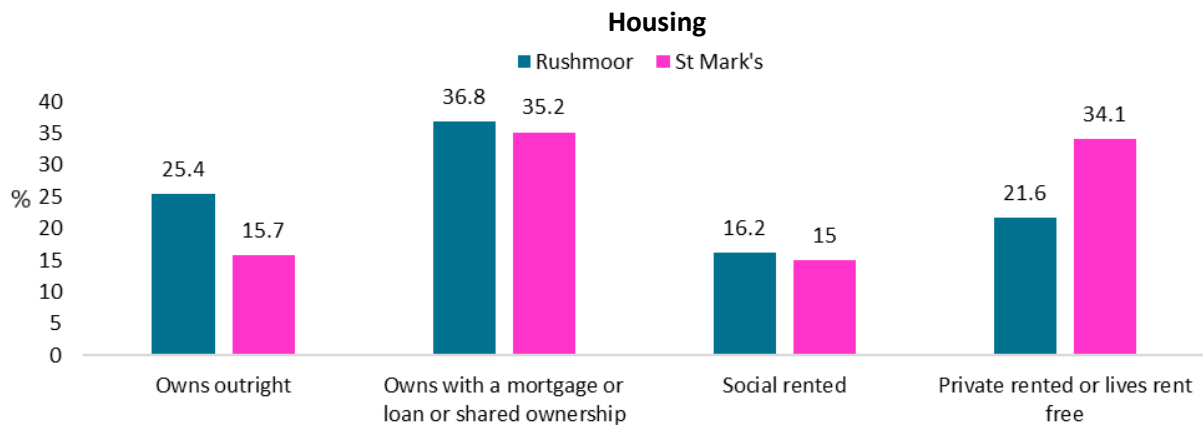
- **Ethnicity:** There are slightly less Asian residents in St. Mark's, when compared to Rushmoor as a whole.



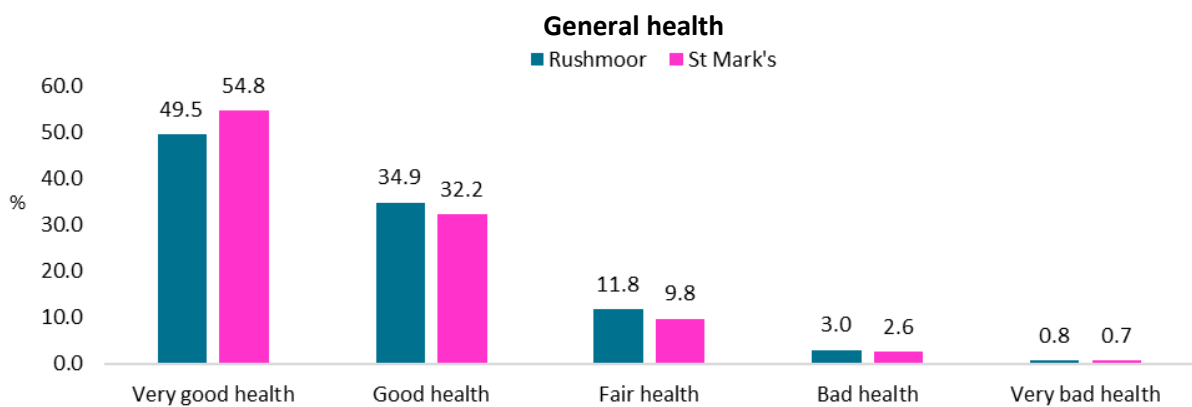
- **Religion:** St Mark's has a slightly higher percentage of residents with no religion, when compared to Rushmoor as a whole.



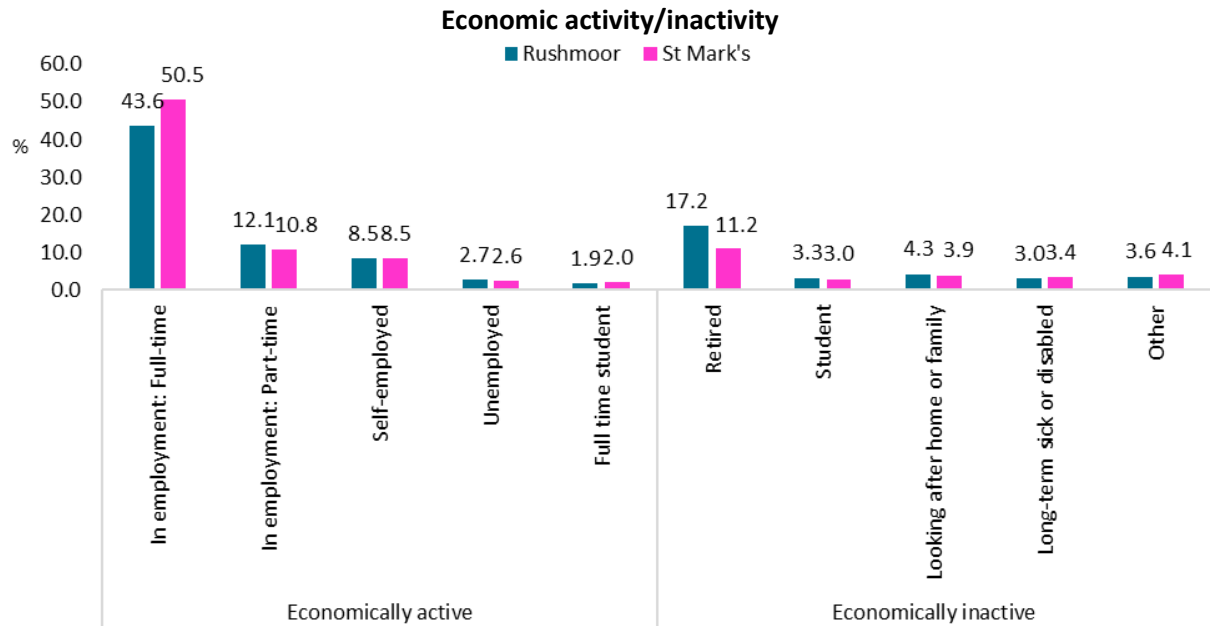
- **Housing:** A lower percentage of residents in St Mark's own their homes outright, and a higher percentage rent their homes from private landlords (this will include Army housing), when compared to Rushmoor as a whole



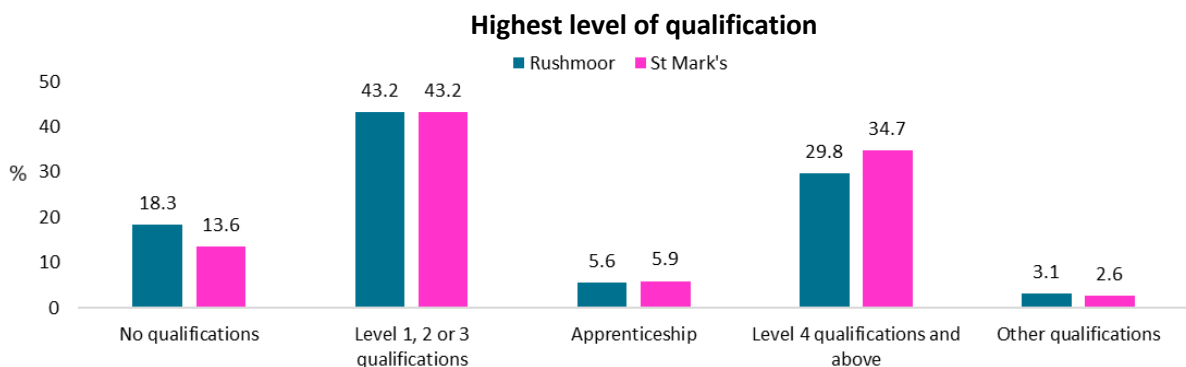
- **Health:** A slightly higher percentage of St Mark's residents reported that they were in very good health, when compared with Rushmoor as a whole.



- **Economic activity/inactivity:** St Mark's ward has a higher percentage of full time employed residents and a slightly lower percentage of retired residents, when compared to Rushmoor as a whole.



- **Qualifications:** A slightly higher percentage of St Mark's residents have level 4 and above qualification and less have no qualifications, when compared to Rushmoor as a whole.

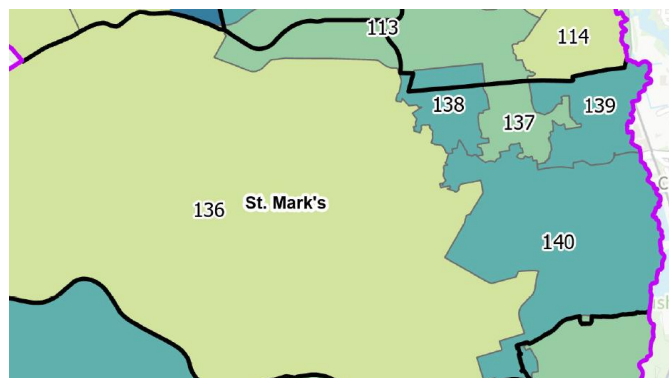
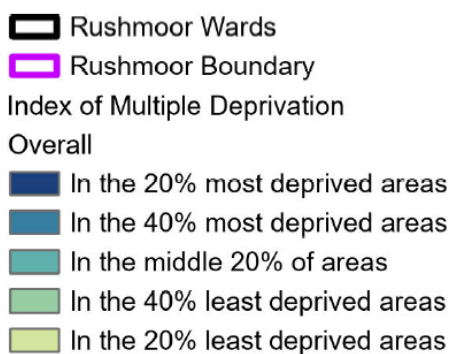


- Level 1 and entry level qualifications: 1 to 4 GCSEs grade A* to C , Any GCSEs at other grades, O levels or CSEs (any grades), 1 AS level, NVQ level 1, Foundation GNVQ, Basic or Essential Skills
- Level 2 qualifications: 5 or more GCSEs (A* to C or 9 to 4), O levels (passes), CSEs (grade 1), School Certification, 1 A level, 2 to 3 AS levels, VCEs, Intermediate or Higher Diploma, Welsh Baccalaureate Intermediate Diploma, NVQ level 2, Intermediate GNVQ, City and Guilds Craft, BTEC First or General Diploma, RSA Diploma
- Apprenticeship
- Level 3 qualifications: 2 or more A levels or VCEs, 4 or more AS levels, Higher School Certificate, Progression or Advanced Diploma, Welsh Baccalaureate Advance Diploma, NVQ level 3; Advanced GNVQ, City and Guilds Advanced Craft, ONC, OND, BTEC National, RSA Advanced Diploma
- Level 4 qualifications and above: degree (BA, BSc), higher degree (MA, PhD, PGCE), NVQ level 4 to 5, HNC, HND, RSA Higher Diploma, BTEC Higher level, professional qualifications (for example, teaching, nursing, accountancy)
- Other: vocational or work-related qualifications, other qualifications achieved in England or Wales, qualifications achieved outside England or Wales (equivalent not stated or unknown)

Deprivation breakdown

The Government's Index of Multiple Deprivation (IMD) 2025 provides a relative deprivation score for each small area in England, it covers a range of economic, social and housing issues. The overall score is calculated using data from seven domains. Most of indicator data has come from 2022 to 2024 and some of the data is from the 2021 Census. The Indices of Deprivation cover geographical areas that are called Lower-layer Super Output Area level (LSOA), of which there are 33,755 in England. Each LSOA is ranked in order against all other LSOA in the country, where 1 is the most deprived and 33,755 is the least deprived.

There is a total of 60 LSOAs in Rushmoor. Unfortunately, LSOAs and the council's wards do not exactly line up. In St Mark's ward there are parts of five LSOAs.



Overall IMD

LSOA 136 is less deprived **Overall (IMD)** than 83% of neighbourhoods



LSOA 137 is less deprived **Overall (IMD)** than 65% of neighbourhoods



LSOA 138 is more deprived **Overall (IMD)** than 50% of neighbourhoods



LSOA 139 is less deprived **Overall (IMD)** than 56% of neighbourhoods



LSOA 140 is less deprived **Overall (IMD)** than 59% of neighbourhoods



← More deprived

Less deprived →

For comparison purposes below is overall IMD for Rushmoor (average rank of the LSOAs)

Rushmoor is less deprived **Overall (IMD)** than 67% of local authority districts



← More deprived

Less deprived →

[Open Government Licence](#)

St Mark's ward has no areas in the 20% most deprived areas in England for Multiple Deprivation. For more information about the Index of Multiple Deprivation please see our IMD 2025 data sheet.