

Rushmoor Local Plan Policies Map February 2019 - North Sheet

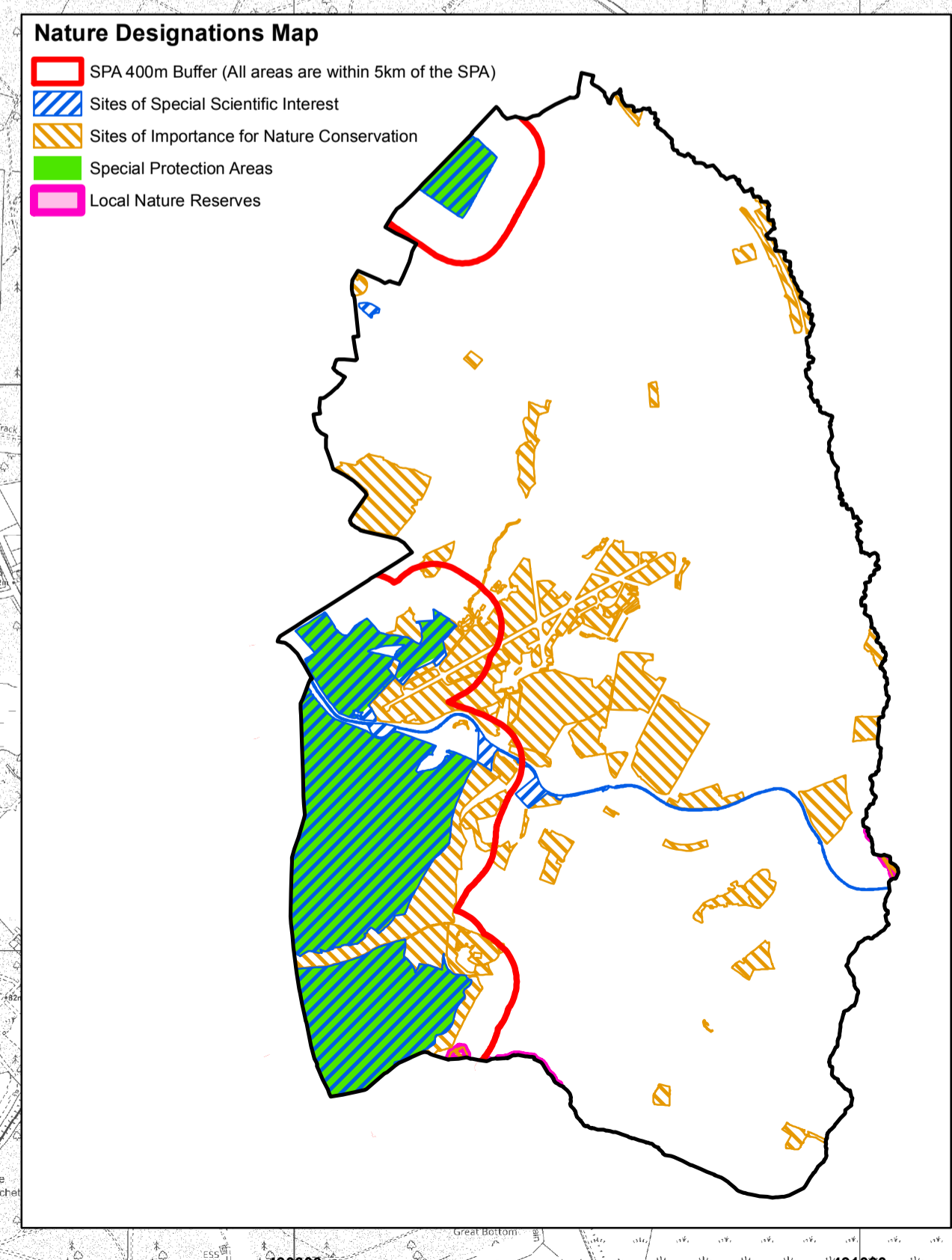
Legend	Local Plan Designation	Local Plan Policy
	Defined Urban Area	SS2
	Town/District Centre	SP1, SP2, SP3, LN2
	Primary Shopping Area	SP1, SP2
	Primary Frontage	SP1.1, SP2.1, SP3.1
	Additional Primary Frontage (Farnborough)	SP2.1
	Secondary Frontage	SP1.2, 2.2, 3.2
	Additional Secondary Frontage (Aldershot)	SP1.2
	Site Allocation (Shaping Places)	SP1.3, SP1.4, SP1.5, SP1.6, SP1.7, SP1.8, SP2.3, SP5, SP6, SP7, SP8, SP10
	Site Allocation Wellesley (Shaping Places)	SP5
	Airport Planning Policy Boundary	SP4
	AAIB and RAIB	SP4.5
	Conservation Area	HE3
	Scheduled Monuments *	HE1
	Parks and Gardens *	HE1
	Open Space	DE6
	Playing Pitches	DE7
	Existing Travelling Showpeople Sites	LN3
	Travelling Showpeople Allocation	LN3.1, LN3.2
	Local Neighbourhood Facilities	LN6
	Strategic Employment Sites	PC2, PC4, PC5, PC6
	Locally Important Employment Sites	PC3, PC7
	Special Protection Areas *	NE1, NE4
	Site of Special Scientific Interest *	NE4
	Local Nature Reserves *	NE4
	Sites of Importance for Nature Conservation *	NE4
	Important Open Areas	NE2
	Green Corridors	NE2
	Countryside	NE5
	Flood Zones *	NE6
	Areas at Risk of Surface Water Flooding	NE7

* Boundaries provided by others correct at February 2019

Floodzone data provided by the Environment Agency
 Scheduled Monuments data and Parks and Gardens data provided by Historic England
 Sites of Special Scientific Interest data provided by Natural England
 Sites of Importance for Nature Conservation data, Special Protection Areas data and Local Nature Reserves data supplied by the Hampshire Biodiversity Information Centre

** All areas outside the Defined Urban Area are subject to the Countryside Policy (NE5) except the area designated as an Important Open Area (Policy NE2) between North Camp and Aldershot (Queens' Parade and MoD playing fields/Mons Hill)

0 Metres 500 1,000



INSET MAP 1

INSET MAP 2

