

# The Index of Multiple Deprivation 2019 data sheet

Last updated: January 2020  
Produced by: Policy and Communications  
Contact: [policy@rushmoor.gov.uk](mailto:policy@rushmoor.gov.uk)

Summary - Rushmoor has three small areas of multiple deprivation that are in the 20% most deprived in the country

## English Indices of Deprivation

The 2019 English Indices of Deprivation was published on September 27<sup>th</sup> 2019 and replaces the 2015 English Indices of Deprivation. The 2019 Index of Multiple Deprivation (IMD) combines a number of indicators chosen to cover a range of economic, social and housing issues into a single deprivation score for each small area in England. The overall score is calculated using data from seven domains. **Most of the indicator data has been taken from around 2015 and 2016 and some data is from the 2011 Census.** The indicators used for the Index of Multiple Deprivation 2019, can be found at the end of this data sheet.

The Indices of Deprivation have been produced at Lower-layer Super Output Area (LSOA) level of which in 2019 there were 32,844 in the country, with 58 LSOAs in Rushmoor. There are several in each ward, including many that overlap the ward boundaries. Each LSOA is ranked as part of the IMD against all other LSOAs in England, where 1 is the most deprived and 32,844 is the least deprived.

## IMD 2019 Summary

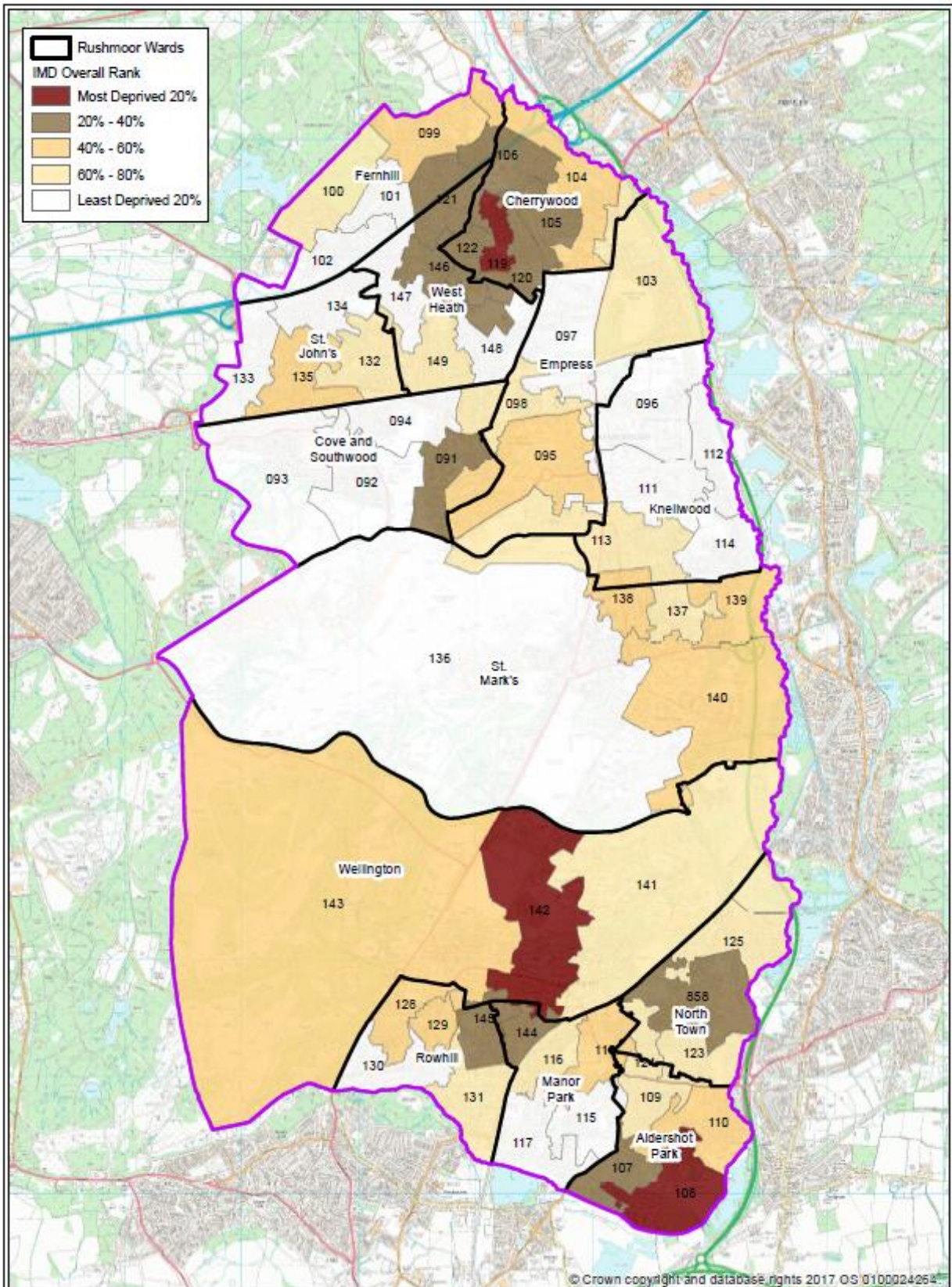
Rushmoor has three small areas of multiple deprivation – LSOAs that are in the 20% most deprived in the country:

- Part of Cherrywood ward (**LSOA 119 ranked 3,693 - down from 4,691 in 2015**)
- Part of Aldershot Park ward (**LSOA 108 ranked 4,053 – down from 4,452 in 2015**)
- Part of Wellington ward (**LSOA 142 ranked 5,123 – down from 9,131 in 2015**)

Of the other areas 11 LSOAs are in the 40% most deprived, 12 LSOAs are in the middle 20%, 14 LSOAs are in the 40% least deprived and 18 LSOAs are in the 20% least deprived areas in the country (see illustrative graph on page 3).

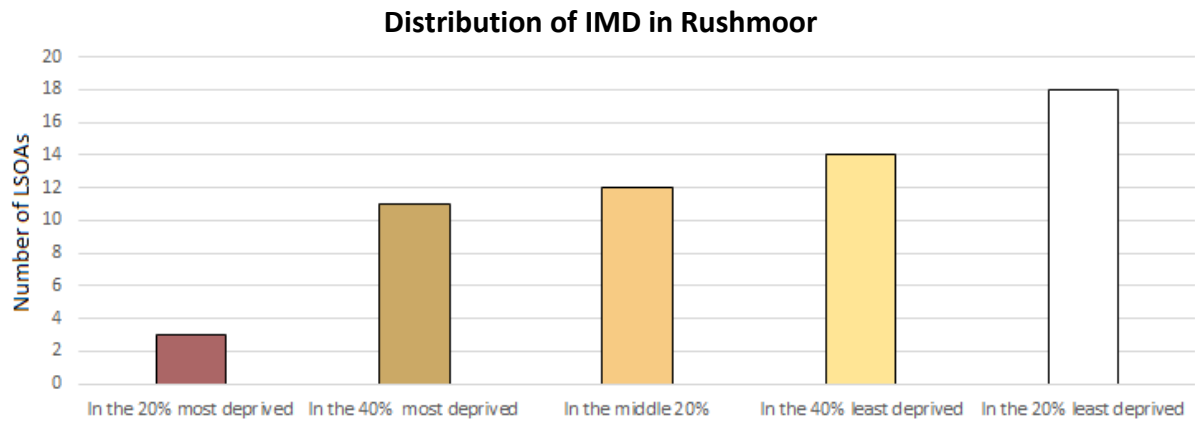
Part of Cove and Southwood ward (LSOA 93) is the eighth least deprived area in England (ranked 32,837). In the 2015 English Indices of Deprivation it was the 123 least deprived area.

The map on the following page shows the LSOAs in Rushmoor. The darker the colour the more deprived the area.



### Index of Multiple Deprivation 2019

Data Source: DCLG 2019  
 © 2015 Rushmoor Borough Council  
 © Crown copyright and database rights 2019 Ordnance Survey 100024264



## Comparisons

In Hampshire there are 37 LSOAs in the 20% most deprived in the country, 23 in Havant, eight in Gosport, three in both the New Forest and Rushmoor, one in Basingstoke and Dene, Eastleigh and Test Valley. LSOA 93 in Rushmoor is the eighth least deprived area in England and is the least deprived area in Hampshire.

Around Rushmoor’s neighbours, Hart, Surrey Heath, and Waverley have no LSOAs in the 20% most deprived in the country. Guildford has two LSOAs in in the 20% most deprived in the country.

## Domain information

The table on the following page shows the scores for the individual LSOAs in terms of the individual domains, which are:

- Income
- Employment
- Education, Skills and Training
- Health Deprivation and Disability
- Crime
- Barriers to Housing and Services
- Living Environment

The indicators used for the Index of Multiple Deprivation 2019 and the individual domains can be found at the end of this data sheet.

### The Index of Multiple Deprivation 2019 - Scores for Lower Super Output Areas in Rushmoor across the domains - Key to table

In the 20% most deprived areas	In the 40% most deprived areas	In the middle 20% of areas	In the 40% least deprived areas	In the 20% least deprived areas
--------------------------------	--------------------------------	----------------------------	---------------------------------	---------------------------------

Wards covered by LSOA and approx. percentage	LSOA Code	Index of Multiple Deprivation	Income	Employment	Education, Skills & Training	Health Deprivation & Disability	Crime	Barriers to Housing & Services	Living Environment
Cove and Southwood (100%)	91	7174	6709	8448	6524	6512	5482	7202	27237
Cove and Southwood (100%)	92	31746	32567	32213	28273	26699	21426	16958	30187
Cove and Southwood (100%)	93	32837	32731	32058	29776	30388	32191	31034	31242
Cove and Southwood (100%)	94	27881	29265	30466	19117	23378	16090	14970	25445
Empress (80%) and Cove and Southwood (20%)	95	14324	13148	15893	11061	15716	12759	10523	13924
Knellwood (95%) and Empress (5%)	96	31468	25169	29927	29453	30972	22628	27371	25576
Empress (100%)	97	29363	30389	30081	29954	25205	10408	24340	19422
Empress (55%) and Cove and Southwood (45%)	98	20864	20606	25937	18192	21947	6063	18117	13781
Fernhill (100%)	99	13923	13703	12800	10592	10118	10467	16335	26453
Fernhill (100%)	100	20187	23480	24127	14841	11568	9639	19517	18115
Fernhill (100%)	101	30224	29643	28659	24049	25035	26664	20870	21416
Fernhill (100%)	102	29081	27835	28531	16917	25928	26092	22500	23306
Empress (95%) and Cherrywood (5%)	103	24475	25581	31961	25934	27856	6265	11198	14502
Cherrywood (90%) and Fernhill (10%)	104	15318	12950	22106	12385	19967	16143	2939	17660
Cherrywood (100%)	105	7921	7942	11297	10437	8534	3902	2798	22569
Cherrywood (85%) and Fernhill (15%)	106	10071	8081	13862	7196	11191	12523	4423	22821
Aldershot Park (100%)	107	6938	6788	6447	4538	2653	18383	17056	27038
Aldershot Park (100%)	108	4053	6293	3556	2171	2311	10779	7173	28522
Aldershot Park (100%)	109	23862	20372	21845	17449	19202	24909	26342	16863
Aldershot Park (100%)	110	13542	12075	14616	9319	10032	17815	10235	23244
Knellwood (100%)	111	28756	30928	26413	28105	26284	21286	9842	24534
Knellwood (100%)	112	31907	30532	31606	23023	29269	29489	24631	23966
Knellwood (95%) and Empress (5%)	113	22027	22835	18560	24935	11580	24759	13965	20716
Knellwood (100%)	114	31448	31382	29864	26588	22461	22996	26354	28274
Manor Park (90%) and Aldershot Park (10%)	115	27889	27292	25677	20941	19966	19266	28778	21969
Manor Park (100%)	116	22564	15299	24087	22793	23622	17537	16771	17237
Manor Park (100%)	117	30853	28701	29129	24419	26045	24520	28802	22009
Manor Park (80%) and North Town (10%) and Aldershot Park (10%)	118	18993	13259	25145	19738	17709	20034	11013	11449

Wards covered by LSOA and approx. percentage	LSOA Code	Index of Multiple Deprivation	Income	Employment	Education, Skills & Training	Health Deprivation & Disability	Crime	Barriers to Housing & Services	Living Environment
Cherrywood (100%)	119	3693	3186	5541	2233	3641	4816	7664	27684
Cherrywood (100%)	120	11116	8229	14196	5988	18173	4330	14070	27844
Fernhill(45%) & WestHeath(45%) & Cherrywood(10%)	121	13128	16261	16455	8566	19227	11676	1844	21599
Cherrywood (80%) and West Heath (20%)	122	8969	6719	11604	4101	9857	9726	14082	23110
North Town (95%) and Aldershot Park (5%)	123	22885	21349	25139	13276	23941	23356	17206	12502
North Town (80%) and Aldershot Park (20%)	124	24131	19403	28945	15864	24920	21325	17996	14262
North Town (100%)	125	22758	19842	24172	11197	21165	24131	13366	29655
Rowhill (100%)	128	13793	12895	15091	10512	10946	11475	12003	21422
Rowhill (100%)	129	13520	10891	13059	14938	12911	17415	15199	9353
Rowhill (100%)	130	27323	27695	26997	22636	26463	24903	7370	26777
Rowhill (100%)	131	21256	17267	26827	22082	12249	24389	7174	25739
St. John (100%)	132	22351	20092	25580	15298	18666	9508	19829	27562
St. John (100%)	133	30663	29480	32379	27694	30174	21546	12731	25204
St. John (100%)	134	26453	24645	27731	20133	28052	25326	9317	20480
St. John (100%)	135	18285	16858	16706	11809	20095	19828	9547	24878
St Marks (100%)	136	28933	26589	30170	21809	24773	25818	20157	17832
St Marks (100%)	137	20582	22826	17754	18344	14971	10321	25809	17222
St Marks (80%) and Knellwood (20%)	138	17376	14349	12118	22612	14166	18422	18285	18529
St Marks (100%)	139	15882	15263	16733	12605	9232	21172	15914	14054
St Marks (100%)	140	15764	15284	20465	12446	10360	22473	5538	18475
Wellington (100%)	141	20157	28470	31867	14302	11838	23371	1377	28043
Wellington (100%)	142	5123	1094	10458	13234	9143	5492	3408	24696
Wellington (95%) and Rowhill (5%)	143	17037	24106	23394	11561	7929	12468	6114	23858
Manor Park (95%) and Wellington (5%)	144	8415	4553	16732	16571	15568	3695	10954	3093
Rowhill(80%) & Wellington(10%) & Manor Park(10%)	145	8964	5045	13130	14431	14082	2613	10533	15545
West Heath (100%)	146	12193	10236	14852	5840	12311	12301	11217	27102
West Heath (100%)	147	26342	22617	23396	19006	25280	17131	24661	25972
West Heath (100%)	148	27874	25582	29049	25342	25282	14206	24364	16276
West Heath (100%)	149	26168	25502	26255	19245	19036	13493	24590	25898
North Town (100%)	858	12610	10023	12626	6821	13079	18192	14808	21029
Number in 20% most deprived		3	5	3	7	4	9	8	1
Number in 20% least deprived		18	15	20	7	9	3	6	13

## Areas with specific challenges

The Index of Multiple Deprivation is divided into seven indicator domains. The table below compares the areas in Rushmoor with specific domain challenges in 2015 and 2019. These areas are in the 20% most deprived for the domains in England – If the LSOAs is in **bold** they also have multiple deprivation and if the LSOA is in **red** then they are in the 10% most deprived areas in England.

Deprivation Domain	Lower Super Output Areas 2015	Lower Super Output Areas 2019
Income	4 pockets <ul style="list-style-type: none"> <li>• <b>119 (Cherrywood)</b></li> <li>• 142 (Wellington)</li> <li>• <b>108 (Aldershot Park)</b></li> <li>• 91 (Cove and Southwood)</li> </ul>	5 pockets - from the 2015 to 2019 <ul style="list-style-type: none"> <li>• <b>142 (Wellington)</b></li> <li>• <b>119 (Cherrywood)</b></li> <li>• 144 (Manor Park and a small part of Wellington)</li> <li>• 145 (Rowhill and a small part of Wellington and Manor Park)</li> <li>• <b>108 (Aldershot Park)</b></li> </ul> The indicators have changed or been modified from the 2015 to 2019
Employment	2 pockets <ul style="list-style-type: none"> <li>• <b>108 (Aldershot Park)</b></li> <li>• <b>119 (Cherrywood)</b></li> </ul>	3 pockets <ul style="list-style-type: none"> <li>• <b>108 (Aldershot Park)</b></li> <li>• <b>119 (Cherrywood)</b></li> <li>• 107 (Aldershot Park)</li> </ul> The indicators have changed or been modified from the 2015 to 2019
Health and Disability	4 pockets <ul style="list-style-type: none"> <li>• <b>108 (Aldershot Park)</b></li> <li>• <b>107 (Aldershot Park)</b></li> <li>• 91 (Cove and Southwood)</li> <li>• 145 (Rowhill and a small part of Wellington and Manor Park)</li> </ul>	4 pockets <ul style="list-style-type: none"> <li>• <b>108 (Aldershot Park)</b></li> <li>• <b>107 (Aldershot Park)</b></li> <li>• <b>119 (Cherrywood)</b></li> <li>• 91 (Cove and Southwood)</li> </ul> The indicators have changed or been modified from the 2015 to 2019
Education, Skills and Training	9 pockets <ul style="list-style-type: none"> <li>• <b>119 (Cherrywood)</b></li> <li>• <b>122 (Cherrywood and small part of West Heath)</b></li> <li>• <b>108 (Aldershot Park)</b></li> <li>• 120 (Cherrywood)</li> <li>• 107 (Aldershot Park)</li> <li>• 858 (North Town)</li> <li>• 146 (West Heath)</li> <li>• 91 (Cove and Southwood)</li> <li>• 106 (Cherrywood and a small part of Fernhill)</li> <li>• 99 (Fernhill)</li> </ul>	7 pockets <ul style="list-style-type: none"> <li>• <b>108 (Aldershot Park)</b></li> <li>• <b>119 (Cherrywood)</b></li> <li>• 122 (Cherrywood and small part of West Heath)</li> <li>• 107 (Aldershot Park)</li> <li>• 146 (West Heath)</li> <li>• 120 (Cherrywood)</li> <li>• 91 (Cove and Southwood)</li> </ul>
Barriers to Housing and Services	3 pockets <ul style="list-style-type: none"> <li>• 141 (Wellington)</li> <li>• <b>119 (Cherrywood)</b></li> <li>• 104 (Cherrywood and a small part of Fernhill)</li> </ul>	8 pockets <ul style="list-style-type: none"> <li>• <b>141 (Wellington)</b></li> <li>• <b>121 (part Fernhill and West Heath and a small part of Cherrywood)</b></li> <li>• <b>105 (Cherrywood)</b></li> </ul>

		<ul style="list-style-type: none"> <li>• <b>104 (Cherrywood and a small part of Fernhill)</b></li> <li>• <b>142 (Wellington)</b></li> <li>• 106 (Cherrywood and a small part of Fernhill)</li> <li>• 140 (St Mark's)</li> <li>• 143 (Wellington and a small part of Rowhill)</li> </ul>
Living Environment	1 pocket <ul style="list-style-type: none"> <li>• 144 (Manor Park and a small part of Wellington)</li> </ul>	1 pocket <ul style="list-style-type: none"> <li>• <b>144 (Manor Park and a small part of Wellington)</b></li> </ul>
Crime	2 pockets <ul style="list-style-type: none"> <li>• <b>145 (Rowhill and small part of Wellington and Manor Park)</b></li> <li>• 124 (North Town and a small part of Aldershot Park)</li> </ul>	9 pockets <ul style="list-style-type: none"> <li>• <b>145 (Rowhill and small part of Wellington and Manor Park)</b></li> <li>• 144 (Manor Park and a small part of Wellington)</li> <li>• 105 (Cherrywood)</li> <li>• 120 (Cherrywood)</li> <li>• <b>119 (Cherrywood)</b></li> <li>• 91 (Cove and Southwood)</li> <li>• <b>142 (Wellington)</b></li> <li>• 98 (part of Empress and Cove and Southwood ward)</li> <li>• 103 (Empress and a small part of Cherrywood)</li> </ul>

## Indicators used for the Index of Multiple Deprivation 2019

Domains and weighting	Indicators
Income Deprivation 22.5%	<ul style="list-style-type: none"> <li>• Adults and children in Income Support families</li> <li>• Adults and children in income-based Jobseeker's Allowance families</li> <li>• Adults and children in income-based Employment and Support Allowance families</li> <li>• Adults and children in Pension Credit (Guarantee) families</li> <li>• Adults and children in Child Tax Credit and Working Tax Credit families, below 60% median income not already counted</li> <li>• Asylum seekers in England in receipt of subsistence support, accommodation support, or both</li> <li>• Adults and children in Universal Credit families where no adult is in 'Working – no requirements' conditionality regime</li> </ul>
Employment Deprivation 22.5%	<ul style="list-style-type: none"> <li>• Claimants of Jobseeker's Allowance, aged 18-59/64</li> <li>• Claimants of Employment and Support Allowance, aged 18-59/64</li> <li>• Claimants of Incapacity Benefit, aged 18-59/64</li> <li>• Claimants of Severe Disablement Allowance, aged 18-59/64</li> <li>• Claimants of Carer's Allowance, aged 18-59/64</li> <li>• Claimants of Universal Credit families in the 'Searching for work' and 'No work requirements' conditionality groups</li> </ul>
Health Deprivation & Disability 13.5%	<ul style="list-style-type: none"> <li>• Years of potential life lost</li> <li>• Comparative illness and disability ratio</li> <li>• Acute morbidity</li> <li>• Mood and anxiety disorders</li> </ul>

Education, Skills & Training Deprivation 13.5%	<ul style="list-style-type: none"> <li>• Key stage 2 attainment: average points score</li> <li>• Key stage 4 attainment: average points score</li> <li>• Secondary school absence</li> <li>• Staying on in education post 16</li> <li>• Entry to higher education</li> <li>• Adults with no or low qualifications, aged 25-59/64</li> <li>• English language proficiency, aged 25-59/64</li> </ul>
Crime 9.3%	<p>Recorded crime rates for:</p> <ul style="list-style-type: none"> <li>• Violence</li> <li>• Burglary</li> <li>• Theft</li> <li>• Criminal damage</li> </ul>
Barriers to Housing & Services 9.3%	<ul style="list-style-type: none"> <li>• Road distance to: post office; primary school; general store or supermarket; GP surgery</li> <li>• Household overcrowding</li> <li>• Homelessness</li> <li>• Housing affordability</li> </ul>
Living Environment Deprivation 9.3%	<ul style="list-style-type: none"> <li>• Housing in poor condition</li> <li>• Houses without central heating</li> <li>• Air quality</li> <li>• Road traffic accidents</li> </ul>

## More Information

The Index of Multiple Deprivation 2019 information is published on the Government website:  
<https://www.gov.uk/government/statistics/english-indices-of-deprivation-2019>.