

# Empress ward information

Last updated: October 2024

Produced by: Risk, Performance & Procurement

Contact: [performance@rushmoor.gov.uk](mailto:performance@rushmoor.gov.uk)

Contents	Page
Local democracy	1
Map of Empress	2
Resident survey results	3
Ward population and makeup 2021	4
Deprivation breakdown	7

## Local democracy

### Rushmoor Borough Council ward councillors for Empress:

Member	Party	Year elected
Councillor Julie Hall	Labour	2024
Councillor Gareth Williams	Labour	2023
Councillor Mike Smith	Conservative	2022

### Member(s) of the County Council for Empress ward:

Member	Party	Year elected
County Councillor Adam Jackman (part)	Conservative	2021
County Councillor Roz Chadd (part)	Conservative	2021

### Member of Parliament for Aldershot Constituency:

Member of Parliament	Party	Year elected
Alex Baker	Labour	2024

### Election Turnout

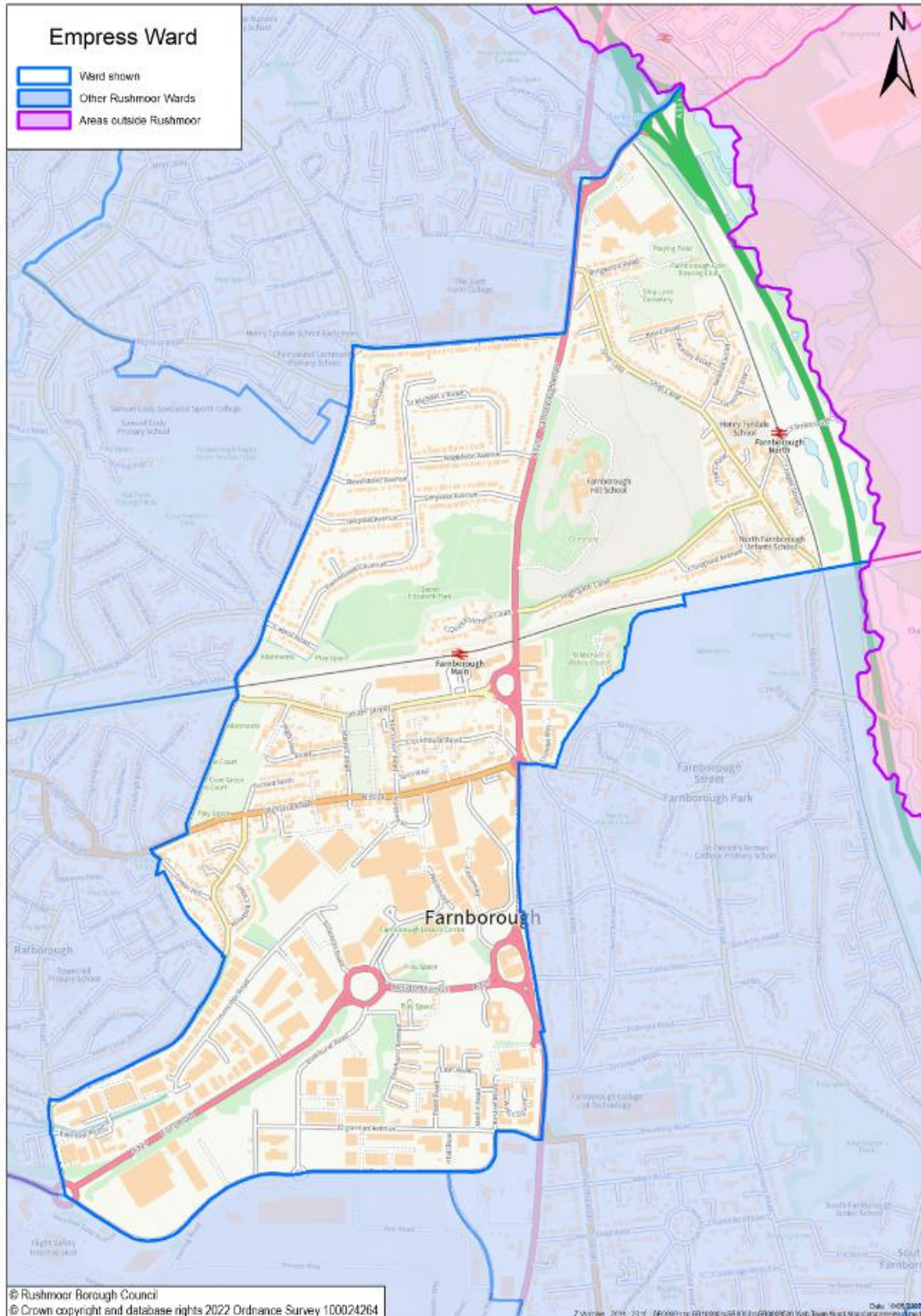
Date	Type	Election Turnout for Empress ward
2 May 2024	Local elections	41.5%

More information can be found on Rushmoor's web site at

<https://www.rushmoor.gov.uk/your-council/elections-and-voting/polling-stations-and-wards/empress-ward/>

## Map of Empress

Empress covers Farnborough town centre. It extends north bounded by Prospect Road and Prospect Avenue and east, bounded by the railway and Farnborough Road.



## Resident survey results

The last Rushmoor Borough Council residents' survey was carried out in 2024, the full results are available on our [website](#). The survey was an online survey and 1,686 surveys were returned, in total 91 residents in Empress ward completed the survey. Although not all wards had a representative number of responses the results can give an indication to what respondents in a ward think.

Below is a summary of the results for Empress ward.

### Top five factors that are important in making somewhere good to live and need improving by ward

Here are the top things that Empress ward respondents think is important in making somewhere good to live and need improving.

Important in making somewhere good	Top five	Need improving
Health services	1 <sup>st</sup>	Sports and leisure facilities
The level of crime	2 <sup>nd</sup>	Road and pavement repairs
Shopping facilities	3 <sup>rd</sup>	Shopping facilities
Sports and leisure facilities	4 <sup>th</sup>	Health services
Parks and open spaces	5 <sup>th</sup>	Cultural facilities (e.g. libraries, art centres, theatres, museums)

### Satisfaction with Rushmoor (Aldershot and Farnborough) as a place to live (with 1 being very dissatisfied and 10 being very satisfied)

	All responses	Farnborough	Empress
Average score	5.50	5.55	5.17

Respondents from Empress ward have a lower satisfaction with Rushmoor as a place to live than respondents from Farnborough, and all respondents to the survey.

### How strongly do you feel you belong to your local area? (very and fairly strongly)

	All responses	Farnborough	Empress
Average score	51.9%	51.5%	51.3%

There is not much difference in how respondents from Empress ward feel in comparison to those from Farnborough and all the those who responded to the survey.

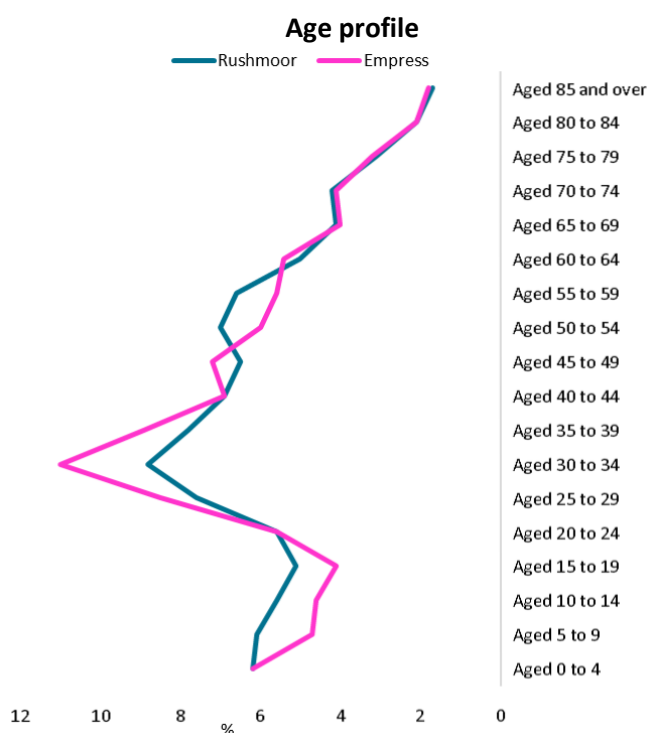
## Ward population and makeup 2021

The following data is from the 2021 Census. The Office of National Statistics calculate ward data by aggregating data for small areas to best fit the ward boundaries, data may differ slightly from other ward data.

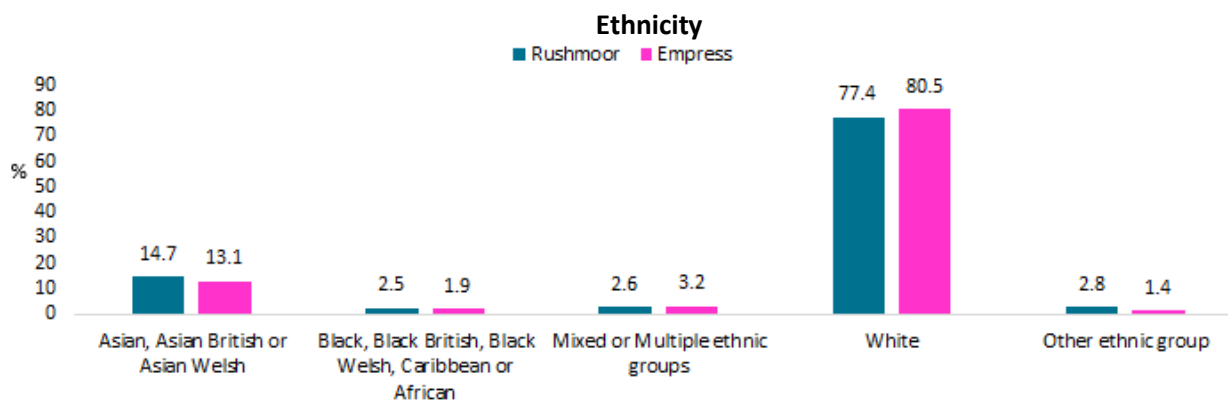
- **Population:**

2021 Census	Population	Total households	Female %	Male %
Empress	6,600	2,900	49.9	50.1

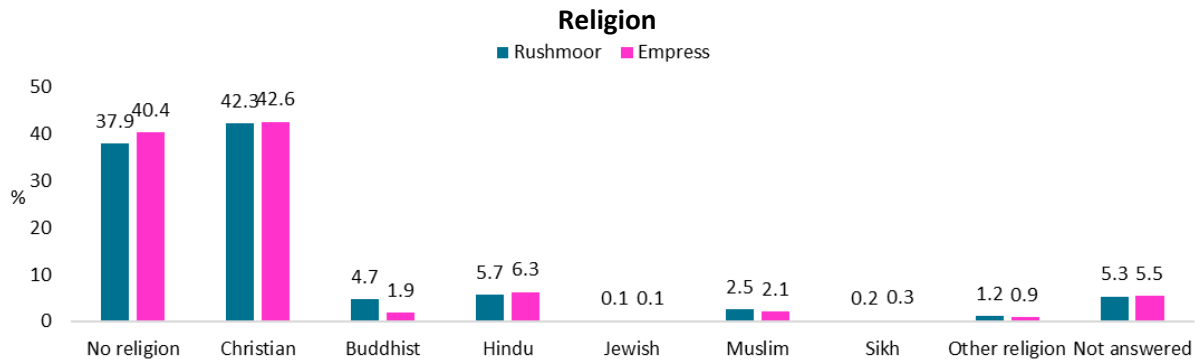
- **Age:** Empress has a slightly lower percentage of 5 to 19 year olds and a higher percentage of 30 to 34 year olds, than Rushmoor as a whole.



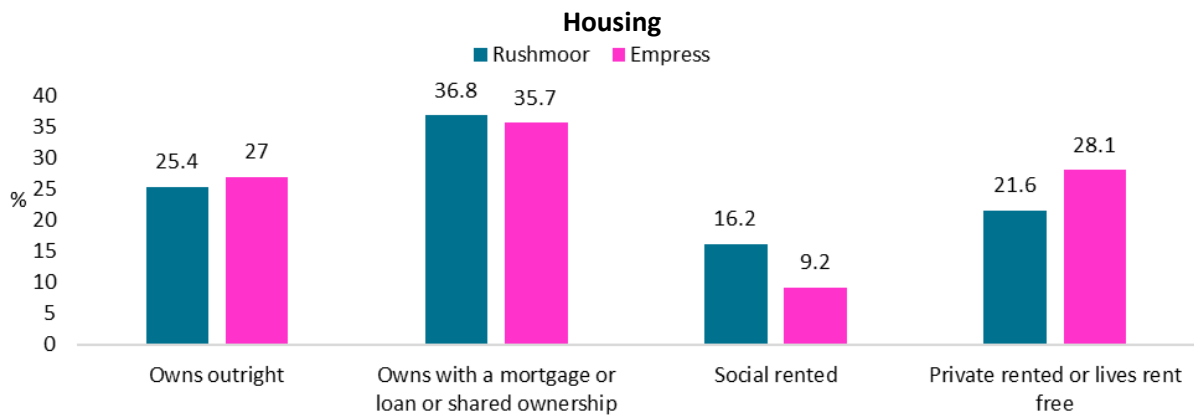
- **Ethnicity:** There is not much difference between the ethnicity of Empress residents and the ethnicity of Rushmoor as a whole.



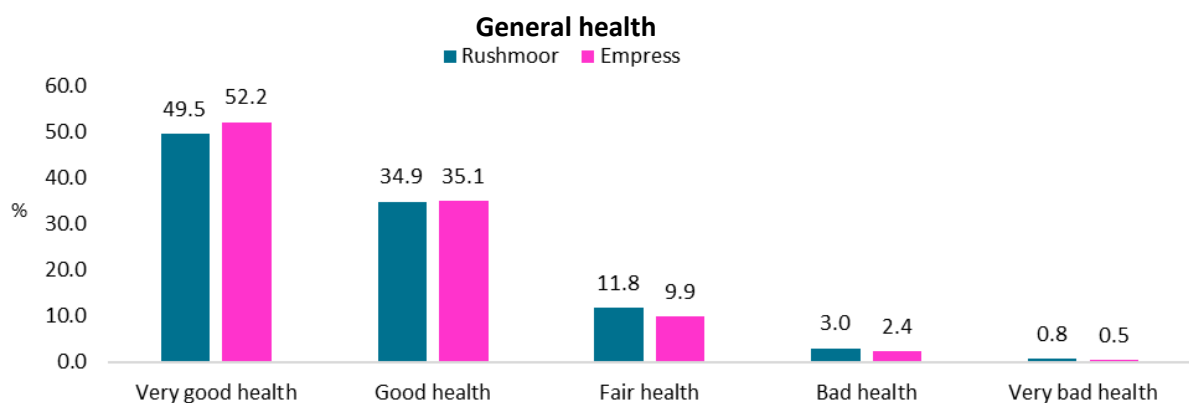
- **Religion:** There is a slightly higher percentage of residents in Empress ward with no religion and a slightly lower percentage of Buddhists, when compared to Rushmoor as a whole.



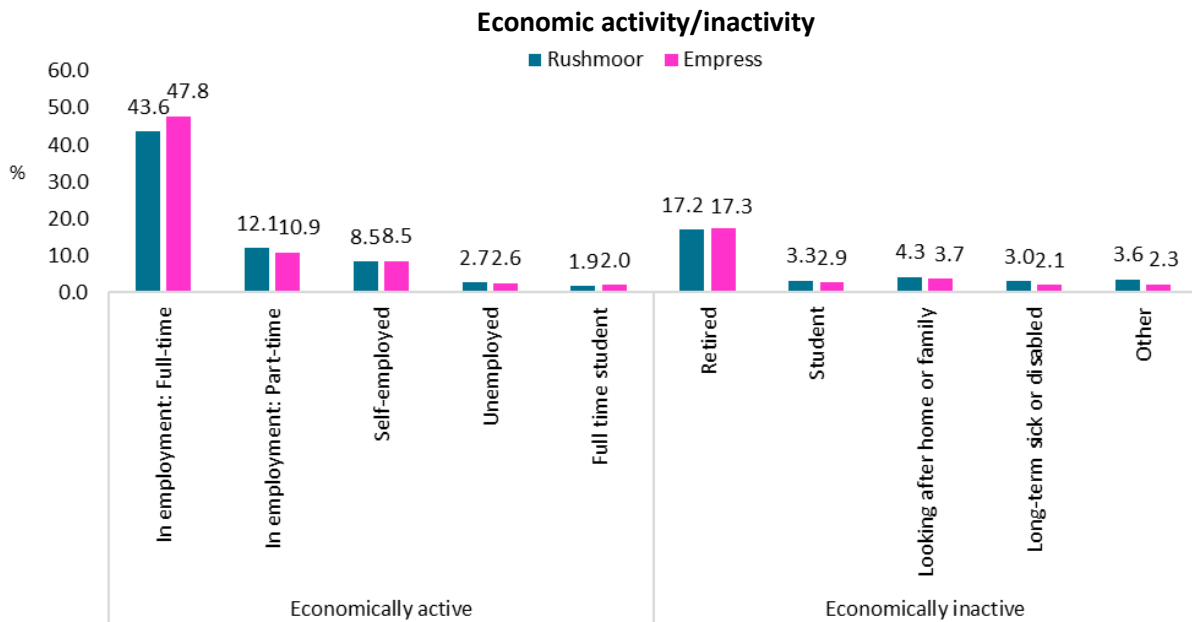
- **Housing:** A higher percentage of residents in Empress rent privately and less rent from social landlords (housing associations), compared with Rushmoor as a whole.



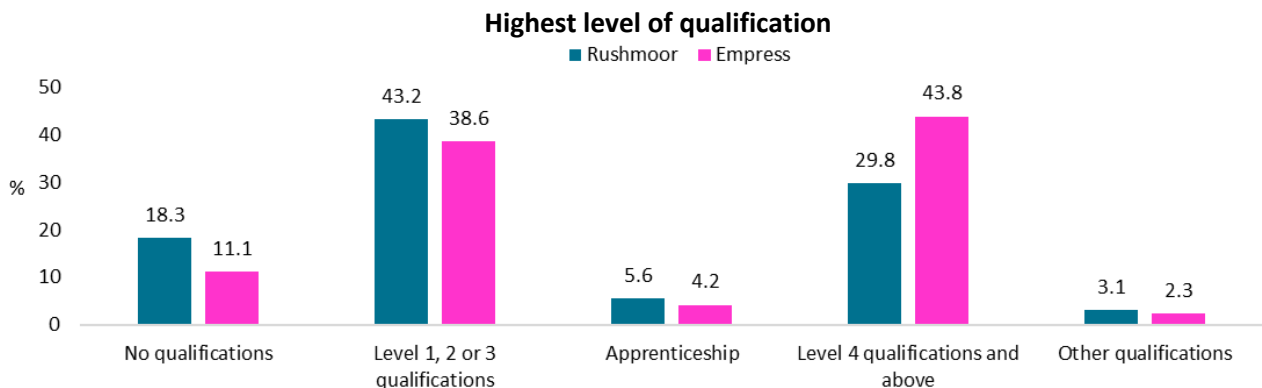
- **Health:** A slightly higher percentage of Empress residents reported very good health, when compared to Rushmoor as a whole.



- **Economic activity/inactivity:** Empress ward has a slightly higher percentage of full time, when compared to Rushmoor as a whole.



- **Qualifications:** A higher percentage of Empress residents have the highest level of qualifications, when compared to Rushmoor as a whole.

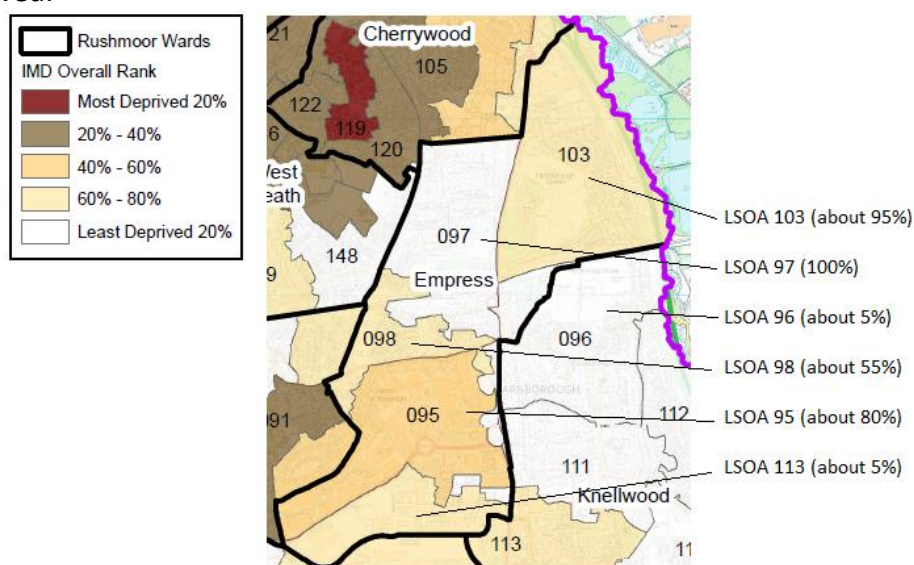


- Level 1 and entry level qualifications: 1 to 4 GCSEs grade A\* to C , Any GCSEs at other grades, O levels or CSEs (any grades), 1 AS level, NVQ level 1, Foundation GNVQ, Basic or Essential Skills
- Level 2 qualifications: 5 or more GCSEs (A\* to C or 9 to 4), O levels (passes), CSEs (grade 1), School Certification, 1 A level, 2 to 3 AS levels, VCEs, Intermediate or Higher Diploma, Welsh Baccalaureate Intermediate Diploma, NVQ level 2, Intermediate GNVQ, City and Guilds Craft, BTEC First or General Diploma, RSA Diploma
- Apprenticeship
- Level 3 qualifications: 2 or more A levels or VCEs, 4 or more AS levels, Higher School Certificate, Progression or Advanced Diploma, Welsh Baccalaureate Advance Diploma, NVQ level 3; Advanced GNVQ, City and Guilds Advanced Craft, ONC, OND, BTEC National, RSA Advanced Diploma
- Level 4 qualifications and above: degree (BA, BSc), higher degree (MA, PhD, PGCE), NVQ level 4 to 5, HNC, HND, RSA Higher Diploma, BTEC Higher level, professional qualifications (for example, teaching, nursing, accountancy)
- Other: vocational or work-related qualifications, other qualifications achieved in England or Wales, qualifications achieved outside England or Wales (equivalent not stated or unknown)

## Deprivation breakdown

The Government's Index of Multiple Deprivation (IMD) 2019 provides a relative deprivation score for each small area in England, it covers a range of economic, social and housing issues. The overall score is calculated using data from seven domains. Most of indicator data has come from 2015 and 2016 and some of the data is from the 2011 Census. The Indices of Deprivation cover geographical areas that are called Lower-layer Super Output Area level (LSOA), of which there are 32,844 in the country. There are a total of 58 LSOAs in Rushmoor.

Unfortunately, LSOAs and the council's wards do not exactly line up. In Empress ward there are all or part of six LSOAs. The following map shows the number of the LSOAs in Empress ward and the approximate percentage of the LSOA in the ward. Each LSOA is ranked in order against all other LSOA in the country, where 1 is the most deprived and 32,844 is the least deprived.



LSOA Code	Approx % in Ward	Index of Multiple Deprivation (IMD) 2019	Income	Employment	Education, Skills and Training	Health Deprivation and Disability	Crime	Barriers to Housing and Services	Living Environment
97	100%	29363	30389	30081	29954	25205	10408	24340	19422
103	95%	24475	25581	31961	25934	27856	6265	11198	14502
95	80%	14324	13148	15893	11061	15716	12759	10523	13924
98	55%	20864	20606	25937	18192	21947	6063	18117	13781
96	5%	31468	25169	29927	29453	30972	22628	27371	25576
113	5%	22027	22835	18560	24935	11580	24759	13965	20716

For comparison purposes below is the mean average results for a LSOA in Rushmoor

Average	19887	18826	21461	16538	17925	16645	14986	21641
---------	-------	-------	-------	-------	-------	-------	-------	-------

Empress ward has no areas of multiple deprivation (in the 20% most deprived) but LSOAs 103 and 98 are in the 20% most deprived areas in the England for the Crime domain.