



FARNBOROUGH
AIRPORT SUSTAINABILITY

Sections 106 and 299A
Town and Country Planning Act 1990

Annual INM7 Noise Assessment 2024
Predictive Contours January to December 2025

CONTENTS

1. Introduction
2. Methodology
3. Results
4. Conclusions

FIGURES

1. Airport Noise Contours 2024 Actual
2. Airport Noise Contours 2025 Predicted

APPENDIX

1. INM 7.0d Substitution List

1. INTRODUCTION

- 1.1 In compliance with the requirements of paragraph 2.5 b), c), d) and e) of the Section 106/299A Town and Country Planning Act 1990 agreement, between Rushmoor Borough Council (RBC) and Farnborough Airport Ltd (FAL), this report provides details of the outcome of the latest Integrated Noise Model (INM) study run for business aviation operations at Farnborough.

This report is for the calendar year 2024 and includes predictive contours for 2025, based on forecast growth in movement numbers and aircraft track data from the study year.

- 1.2 Paragraph 2.5 of the planning agreement states:

- b) *At the end of the 4th Quarter in each year the INM model will be used to produce noise contours based on the actual movements in the past year and a second set of theoretical contours for the year ahead*
- c) *These sets of contours shall be supplied to the council no later than 6 weeks after the model has been used.*
- d) *For paragraphs 2.5 a) and c) the INM model shall use a simplified departure track representation and such simplified departure track representations shall be made after inspection of the spread of actual aircraft tracks on site.*
- e) *For paragraphs 2.5 a) and c) the INM model shall include terrain information and at the end of each year the results shall be compared between the individual INM predicted levels with the measured levels determined by the fixed and mobile monitoring points in and around the site.*

This report is intended to address the requirements of paragraph 2.5, b), c), d) and e).

- 1.3 The intended use of the INM, to produce noise contours relating to business aircraft movements at Farnborough, is to assess the noise impact on the surrounding area under existing conditions and the potential impact of the predicted growth of the airport as permitted by the Planning Agreement.

- 1.4 Civil operations at FAL are restricted to 'daytime' hours only (as defined by PPG 24 "Planning and Noise"). The airport is open from 07:00 to 22:00 hours on weekdays and 08:00 to 20:00 hours at weekends and bank holidays. The modelling process uses representative tracks produced from study of real track data, to construct contours that represent the time averaged noise of operations.

- 1.5 For this report modelling was completed using Version 7.0d of the FAA's Integrated INM. This version of INM includes aircraft types that better represent those in operation at Farnborough Airport together with revised aircraft substitutions.

- 1.6 As in previous reports, the contours displayed within this report reference the work commissioned by RBC from Acoustic Technology Ltd during the consideration of the original FAL planning application. The outcome of this work established contours referred to in paragraph 2.1a of the Agreement, annotated as the "control contours" within this document.

- 1.7 In accordance with clause 12.1 of the planning agreement, further reductions in area of the control contours apply. The reductions are as follows:

- a 72.5% reduction of the land area within the 55dB(A) $L_{Aeq,16h}$ contour
- a 60.0% reduction of the land area within the 60dB(A) $L_{Aeq,16h}$ contour

Table 1 displays the resultant effect on the land area within the control contours.

- 1.8 Aircraft operations during this study period consisted of 29,702 movements of movement types required by the Planning Agreement.

2. METHODOLOGY

2.1 The core stages of the contour methodology are as follows:

- The contours in this report have been produced using the Federal Aviation Administration (FAA) software, the Integrated Noise Model (INM), version 7.0d. This version of the software was released in 30th May 2013. INM has been replaced by the FAA with the Aviation Environmental Design Tool (AEDT) as of May 2015. When using the same settings, the two models give similar results.
- As the INM software is specifically mentioned in the S106 it is considered that this is appropriate software to use when producing contours to compare with contour area limits given in the S106 unless or until FAL and RBC agree otherwise.
- FAL have provided simplified departure and arrival tracks for use in the model, which have been produced following inspection of actual track data from the Aircraft Noise and Operations Management System (ANOMS). These simplified tracks include dispersion to reflect the variations in track observed in the ANOMS data.
- For each runway there is a single modelled arrival route and a single modelled departure route. These routes include a degree of dispersion to reflect the variations in actual tracks flown.
- Local terrain has been included in the model, as it was in the previous methodology and as required by the S106, paragraph 2.5 (e).
- FAL have provided Bickerdike Allen Partners (BAP) with a log of the aircraft movements which occurred in the calendar year of 2024. This section summarises the processing of this aircraft movement data. There was a total of 28,916 fixed wing movements and 786 helicopter movements at Farnborough Airport in the calendar year of 2024 that were included as part of the noise contour assessment.
- In order to produce the 2025 forecast, the 2024 movements were pro-rata based on forecast information provided by FAL.
- There are various categories of aircraft at Farnborough Airport. The majority of aircraft are included for the purposes of producing the noise contours, however some categories are not required to be included, for example those associated with the Airshow or emergencies. The aircraft category has been provided with the log of flights.
- The INM software includes noise information for many common aircraft types, but it does not include every aircraft type. Therefore, the aircraft type codes used in the log need to be mapped to aircraft types in the INM software. For some aircraft, substitutions are proposed by the INM software where a similar alternative aircraft type is used to model the actual type. For larger aircraft this generally does not involve a change but for some smaller aircraft, including a number of the types which commonly operate at Farnborough Airport, substitutions are required. Where INM has no guidance, an aircraft type has been assigned based on the aircraft size and engine details. A full list of the substitutions used by BAP for each aircraft type code used in the log is given in Appendix 1.
- All flights at Farnborough Airport occur during the daytime period, defined as 07:00 to 22:00 during weekdays and 08:00 to 20:00 during weekends and bank holidays.
- Each movement in the log is categorised as either an arrival or departure.
- The INM “STANDARD” profiles have been used for all aircraft departures. For arrivals, a user-defined 3.5 degree approach profile has been used for all aircraft to reflect the steeper approach in operation at Farnborough Airport.
- For the departure movements, the INM software offers a number of flight profiles for most aircraft types, particularly the larger aircraft types. These relate to different departure weights, which are greatly affected by the length of the flight and consequently the fuel load.

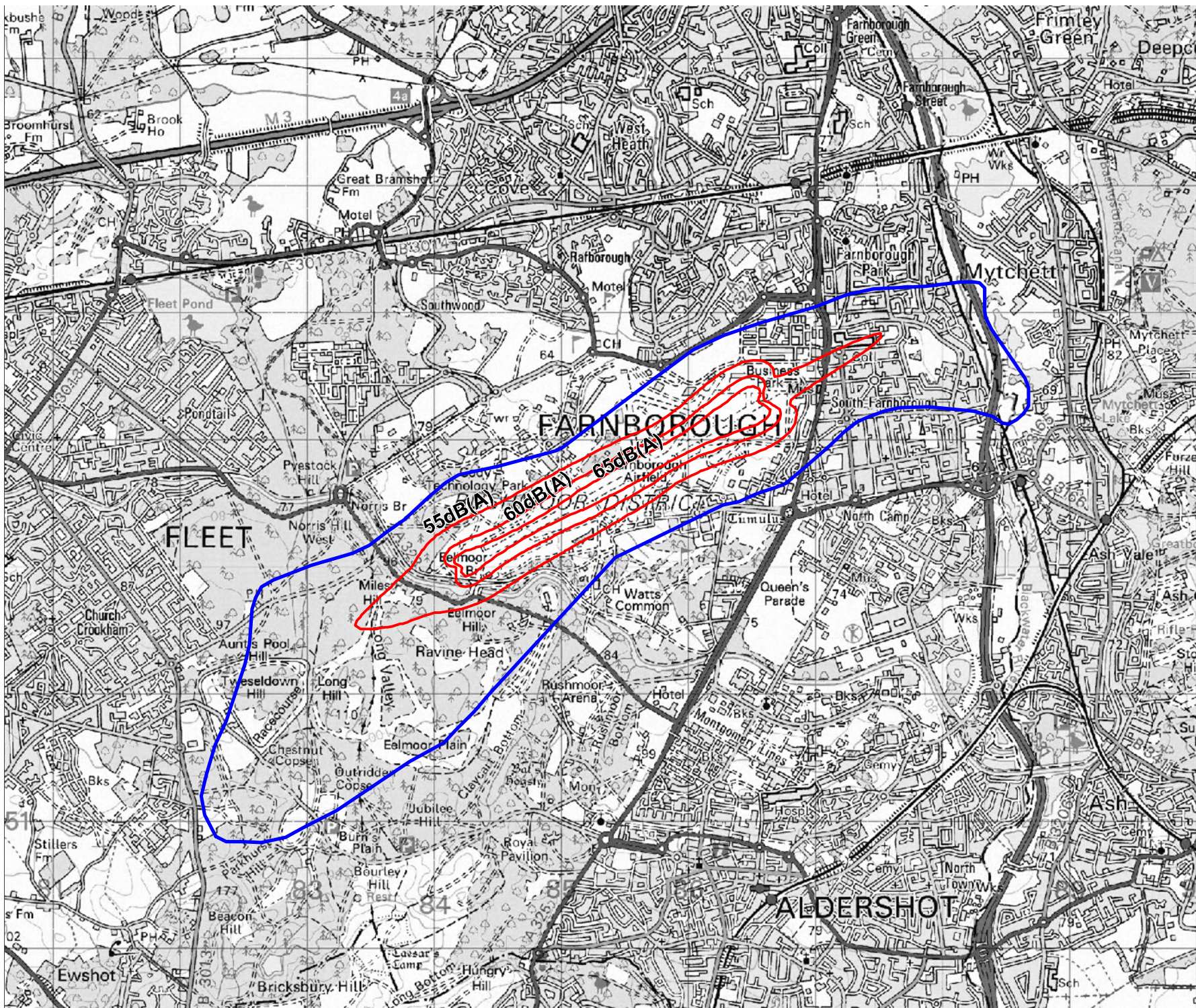
In the INM software this is referred to as the stage length. As the stage length increases, the aircraft has to depart with greater fuel and so its flight profile is slightly lower than when a shorter stage length is flown.

- Stage lengths are defined in increments of 500 nmi up to 1,500 nmi and then in increments of 1000 nmi.
- For the contours in this report, destination airports were given with the aircraft movement data. Stage lengths have been assigned based on the distance of these airports from Farnborough Airport. Where the stage length determined using this method does not exist in the INM software database, the highest stage length available has been used.
- To provide a check of the methodology used in producing the noise contours for this report, a validation exercise has been conducted along similar lines to those done for previous contours for the airport. This has involved the comparison of predicted noise levels for individual operations by the 20 most common aircraft types with the measured noise levels obtained from the airport's permanent noise monitors located at Farnborough College and Tweseldown Racecourse.
- Modifications to the noise model are then made where appropriate to account for any residual differences between the predicted and measured noise levels. Further details of the validation exercise and the resulting modifications are given in Appendix 2.

3. RESULTS

3.1 Figure 1 displays a comparison between this INM contour assessment (2024) and the RBC 1997 Planning Contours. Figure 2 displays predicted contours for 2025 against the same 1997 contours. Both contours include helicopter movements following the same trend as fixed wing movements in terms of movement numbers. When examining the contours there are several important points to note:

- The planning agreement refers only to 55 and 60dB(A) $L_{Aeq,16h}$ however a third 65dB(A) $L_{Aeq,16h}$ contour has been added for information.
- The contour areas for this study period are within the planning permission control contour areas, as amended under clause 12.1a of the planning agreement.
- The predicted contour areas for the study period are also within the planning permission control contour areas, as amended under clause 12.1a of the planning agreement.
- The contours use assumptions and data inputs as described within this report.
- The contours should be regarded as indicative only and represent time averaged noise levels expressed as dB(A) $L_{Aeq,16h}$. This measure represents the sound energy released as noise varies over time, expressed as an average for the relative period.
- Control Contours included as part of the planning agreement between RBC were theoretical and used conceptual aircraft movement routes. The contours attached to this document are generated using representative tracks created through inspection of actual flight track data.
- Helicopter movements are included in the modelling process.
- The steeper angle of approach used at FAL (3.5 as opposed to 3 degrees) has been included in the model to correctly represent the height of arriving aircraft.
- Comparison of INM predicted noise levels for individual aircraft movements against measured noise levels at the NMTs validates the assessment. This shows, as with the exercise reported at the Public Inquiry in 2010, that some of the INM standard aircraft substitutions used older aircraft types that over-estimated the noise levels of the more modern types operating out of Farnborough Airport. The standard substitutions are revised annually, (refer to Appendix 1).



Key:

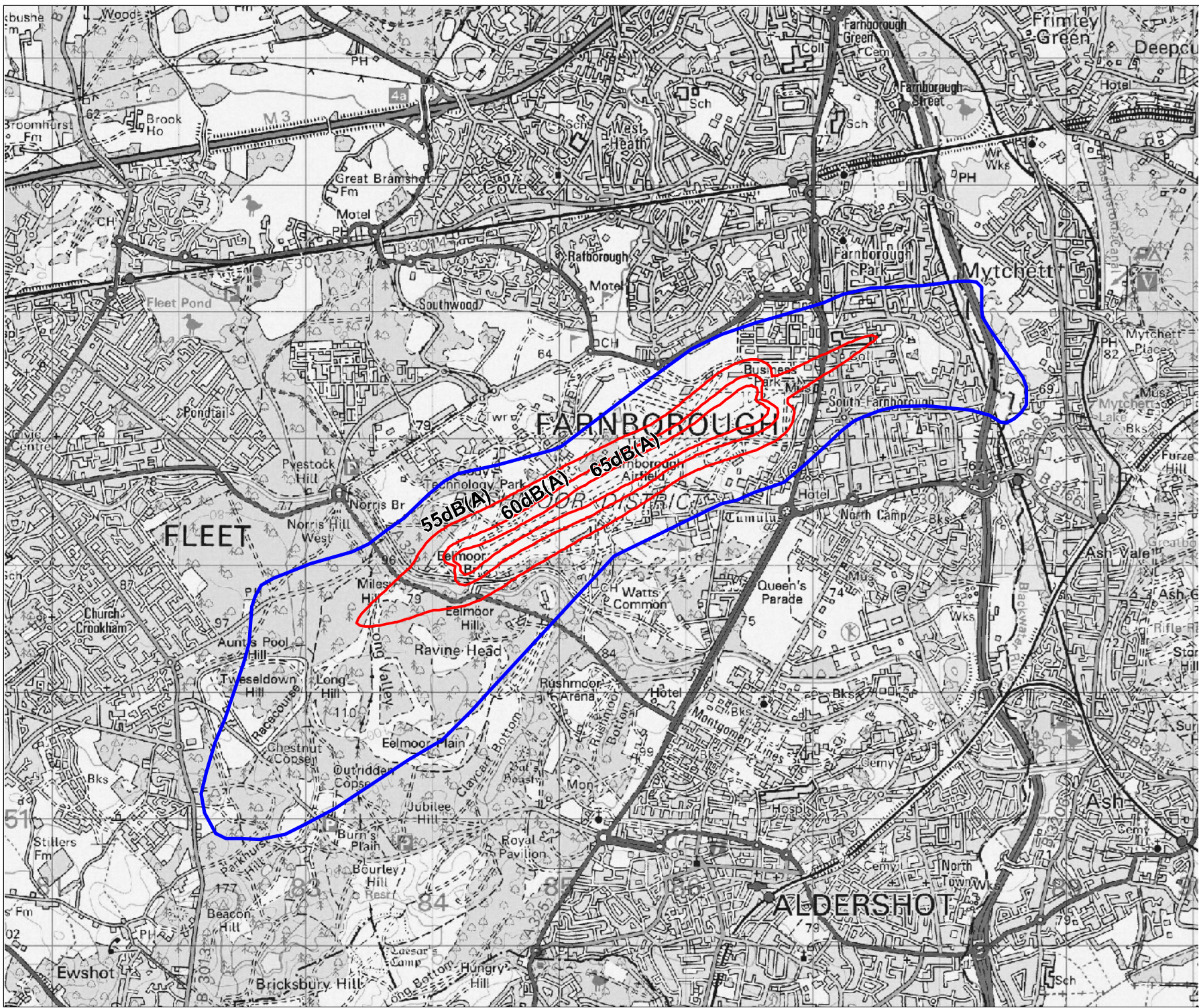
- Airport Noise Contours dB(A) LAeq 16
- Planning limit 55dB(A) LAeq 16 Noise Contour


FARNBOROUGH AIRPORT
 Farnborough Airport Ltd
 Farnborough
 Hampshire
 GU14 6XA
 +44 1252 379000
 © Crown Copyright and database rights (2023)
 OS AC0000807948

Scale at A4	Date	Drawn by
1:40,000	26/02/25	CH

Figure 1: Airport Noise Contours All 2024

Drawing No	Revision
GN TG A OP 3716	A



Key:

- Airport Noise Contours dB(A) LAeq 16
- Planning limit 55dB(A) LAeq 16 Noise Contour


FARNBOROUGH AIRPORT
 Farnborough Airport Ltd
 Farnborough
 Hampshire
 GU14 6XA
 +44 1252 379000
 © Crown Copyright and database rights (2023)
 OS AC0000807948

Scale at A4	Date	Drawn by
1:40,000	26/02/25	CH

Figure 2: Airport Noise Contours
All Predictive 2025

Drawing No	Revision
GN TG A OP 3717	A

Comparison of total land area within each Noise Contour

3.2 Tables 1 and 2 compare the total land area within each contour for both the “control contours” and the most recently produced actual and predicted contours.

Table 1: Predicted noise contour areas, 20,000 movements at 1997 mix (Control Contours)

dB(A) L _{Aeq,16h}	Predicted 20,000 movements 1997 mix (km ²)	Amended Control Contour Areas as per clause 12.1a of the S106 (29/10/2010) (km ²)
55	9.07	6.58
60	4.03	2.42
65	1.70	n/a

Table 2: Contour areas: Actual 2024 and Predicted 2025

dB(A) L _{Aeq,16h}	Actual contour areas 2024 (km ²)	Predicted contour areas, 2025 (km ²)
55	2.15	2.12
60	0.92	0.91
65	0.43	0.43

4. CONCLUSION

4.1 Contours produced for 2024 and the predicted contours for 2025 are within the planning permission area limits.

5.0 SUMMARY

Noise contours have been produced for Farnborough Airport for 2024 and 2025 using a similar methodology to that used in previous years. These are within the planning permission area limits.

Nick Williams
for Bickerdike Allen Partners LLP

David Charles
Partner

A11323_01_RO007_1.0
17 February 2025

7

ENDS

Gareth Andrews
Sustainability Manager
Farnborough Airport

Appendix 1

INM 7.0d Substitution List

Operational Aircraft Code	INM Aircraft Code	Operational Aircraft Code	INM Aircraft Code
A109	A109	BE30	CNA441
A109A	A109	BE40	MU3001
A139	SA330J	BE9L	CNA441
A169	S76	C208	CNA208
A19N	A319-131	C25A	CNA525C
A220	737700	C25B	CNA525C
A318	A319-131	C25C	CNA525C
A319	A319-131	C25M	CNA525C
A320	A320-211	C425	CNA441
AS35	SA355F	C510	CNA510
AS55	SA355F	C525	CNA525C
AS65	SA365N	C52A	CNA525C
ASTR	IA1125	C52B	CNA525C
AT72	DO328	C550	CNA500
AT76	DO328	C560	MU3001
AW159	S76	C56X	C56X*
AW169	S76	C670	CIT3
B206	B206L	C680	CNA680
B250	BE20*	C680A	C68A*
B350	CNA441	C68A	C68A*
B429	B429	C700	CNA680
B733	737300	C750	CNA750
B734	737400	CL30	CL601
B737	737700	CL35	CL35*
B738	737800	CL60	CL60*
BE19	1900D	CL604	CL60*
BE20	BE20*	CL605	CL60*

Operational Aircraft Code	INM Aircraft Code	Operational Aircraft Code	INM Aircraft Code
CL65	CL60*	F9LX	F10062
CL850	CRJ2*	FA6X	GV
CRJ2	CRJ2*	FA7X	FA7X*
CRJ7	CRJ9-ER	FA8X	FA8X*
CRJ9	CRJ9-ER	G150	IA1125
D328	DO328	G200	CL600
DA42	BEC58P	G280	CL601
DA62	BEC58P	G450	GIV
E135	EMB145	G550	GLF5*
E135N	EMB145	G650	GLF6*
E145	EMB145	G650ER	GLF6*
E170	EMB170	GA5C	GV
E190	EMB190	GA6C	GA6C*
E35L	E35L*	GA7C	GV
E50P	CNA510	GALX	CL600
E545	CNA55B	GL5T	GL5T*
E550	E550*	GL6T	GLEX*
E55P	E55P*	GL7T	GL7T*
EA50	ECLIPSE500	GLEX	GLEX*
EC15	SA365N	GLF4	GIV
EC35	EC130	GLF5	GLF5*
EC45	B429	GLF6	GLF6*
EC55	SA365N	H145	B429
EXPL	B407	H160	SA330J
F2LX	F2TH*	H25B	LEAR35
F2TH	F2TH*	H25C	LEAR35
F900	F10062	H750	LEAR35

Operational Aircraft Code	INM Aircraft Code	Operational Aircraft Code	INM Aircraft Code
HA-420	CNA510	P28A	PA28
HA4T	CL600	PA32	GASEPV
HDJT	CNA510	PA46	GASEPV
HS25	LEAR35	PC121	PC12*
KC390	767400	PC24	PC24*
L545	CNA55B	PRM1	LEAR35
L550	E550*	S76	S76
LJ31	LEAR35	S92	S70
LJ35	LEAR35	SB20	HS748A
LJ40	LEAR35	SK76	S76
LJ45	LEAR35	SKING	S61
LJ60	CNA55B	SR20	GASEPV
LJ75	LEAR35	SR22	GASEPV
P180	SD330	TBM7	CNA208

Appendix 2

Validation Adjustments

For each validated aircraft type, the measured noise levels obtained from the airport's permanent noise monitors located at Farnborough College and Tweseldown Racecourse have been compared with the default modelled noise levels at the same locations.

For each aircraft type, an INM aircraft type has been selected along with a multiplier to the number of aircraft movements. This multiplier serves to modify the LA_{eq} noise level, for example a multiplier of 2 will add approximately 3 dB to the noise level for that aircraft type. All the validated types have been modelled at stage length 1. The selections have been based on minimising the difference between the predicted and measured results at the noise monitors.

The table below shows, for each validated aircraft type, the resulting INM type and multiplier Used.

Validated Aircraft Code	Arrivals		Departures	
	INM Aircraft Code	Multiplier	INM Aircraft Code	Multiplier
BE20	CNA441	3.60	CNA441	1.70
C56X	CNA560XL	0.60	CNA560XL	0.40
C68A	CNA680	0.75	CNA750	0.30
CL35	CL601	0.75	CNA560XL	0.45
CL60	CL600	1.40	CNA560XL	0.40
CRJ2	CL601	1.80	CNA560XL	0.80
E35L	EMB145	0.85	F10062	0.35
E550	CNA55B	0.50	CNA55B	0.35
E55P	CNA510	1.55	CNA560XL	0.55
F2TH	CL600	0.90	F10065	0.15
FA7X	F10062	0.65	F10065	0.50
FA8X	F10062	0.55	F10065	0.40
GA6C	GV	0.55	F10065	0.20
GL5T	GV	0.65	F10065	0.45
GL7T	GV	0.90	F10065	0.35
GLEX	GV	0.70	F10065	0.50
GLF5	GV	0.60	F10065	0.40
GLF6	GV	0.65	F10065	0.40
PC12	CNA208	0.90	CNA208	0.35
PC24	CNA55B	0.70	CNA55B	0.55