

# Waste and recycling data sheet

Last updated: February 2018

Produced by: Strategy, Performance and Partnerships

Contact: [policy@rushmoor.gov.uk](mailto:policy@rushmoor.gov.uk)

**Summary – Over the past ten years there has been a small percentage rise in Rushmoor’s recycling rates, however percentage recycled is very low compared to other local authorities in England. The amount of waste produced by Rushmoor residents per household has been declining but in comparison the rate is higher than the South East and England. There had been a fall in the number of fly tipping incidents reported but 2016/17 data shows a rise.**

**Refuse Collection** - Residual household waste collected per household (kg) – year to date figure compared to previous years

The table below shows that over recent years, the amount of waste produced per household had been decreasing. From 2007/08 to 2009/10 Rushmoor had a lower rate than Hampshire, the South East and England. In 2016/17 Rushmoor only had a lower rate than Hampshire, and a higher rate than the South East and England.

Residual household waste per household – year on year										
kg per household	2007/2008	2008/2009	2009/2010	2010/2011	2011/2012	2012/2013	2013/2014	2014/2015	2015/2016	2016/2017
Rushmoor	649	626	607	601	589	592	595	589	595	591
Hampshire	709	650	642	642	623	625	655	657	655	622
South East	754	684	644	624	592	575	588	580	587	579
England	735	669	625	598	568	553	555	558	564	557

(Source: Department for the Environment, Food and Rural Affairs <https://www.gov.uk/government/statistical-data-sets/env18-local-authority-collected-waste-annual-results-tables> )

**Recycling** - Household waste recycled and composted

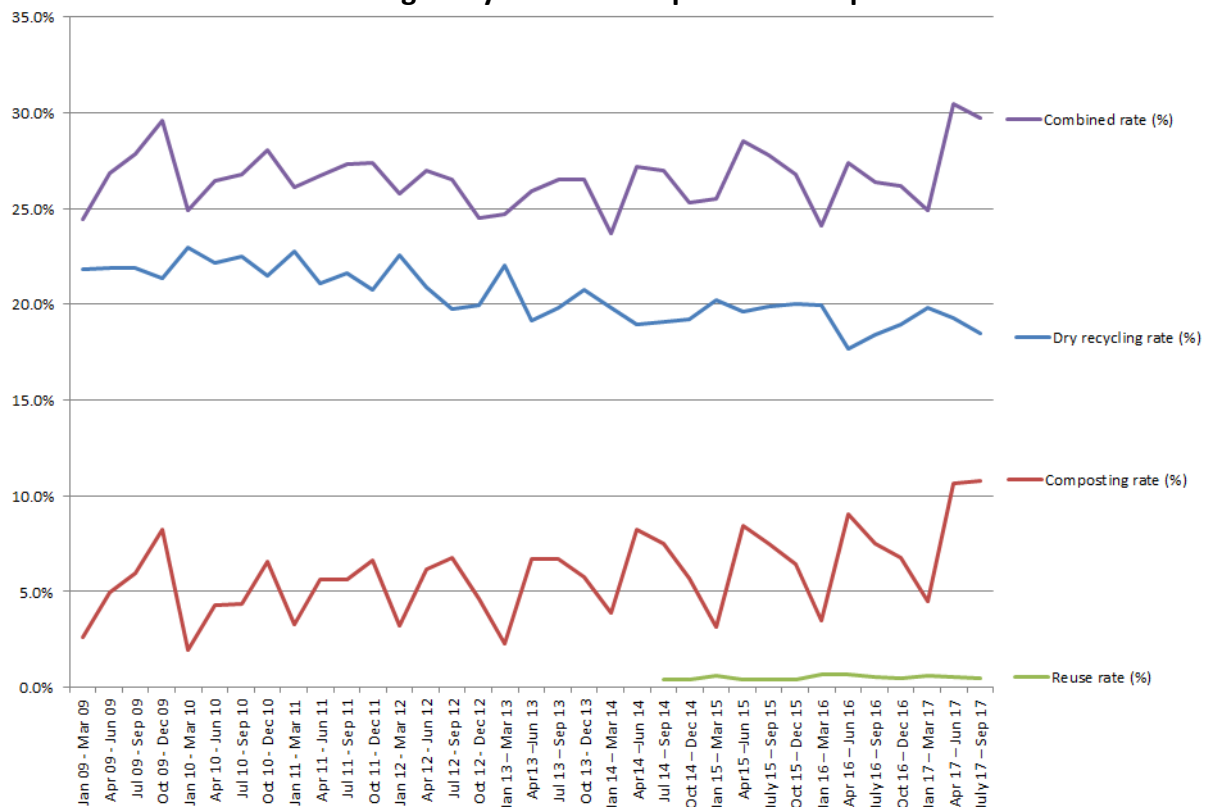
The following table shows that over the past ten years there has been only a small rise in the percentage of waste recycled and the percentage recycled is very low compared to Hampshire, the South East and England.

Household waste sent for reuse, recycling or composting – year on year										
%	2007/ 2008	2008/ 2009	2009/ 2010	2010/ 2011	2011/ 2012	2012/ 2013	2013/ 2014	2014/ 2015	2015/ 2016	2016/ 2017
Rushmoor	26.2	26.2	27.7	27.1	26.9	25.8	25.5	25.9	25.9	26.6
Hampshire	40.3	41.2	40.7	39.7	40.5	38.7	37.7	38.0	39.1	41.6
South East	36.0	38.4	40.0	41.3	43.3	43.4	43.7	45.0	44.5	46.2
England	34.5	37.6	39.7	41.5	43.0	43.2	43.5	43.7	43.0	43.7

(Source: Department for the Environment, Food and Rural Affairs <https://www.gov.uk/government/statistical-data-sets/env18-local-authority-collected-waste-annual-results-tables> )

The table below shows the percentage of recycling over time for dry recycling, composting and the combined rate. It shows that the dry recycling rate appears to be falling and the composting rate rising. The composting rate fluctuates more than the dry recycling rate, peaking in the autumn months. From July 2014 we added the reuse rate to the chart. The reuse rate looks at the percentage of household waste sent for reuse purposes. An example might be sending clothes for resale, or refurbishing some furniture for redistribution to families with low incomes. During April to June 2017, the combined recycling rate got above 30% for the first time.

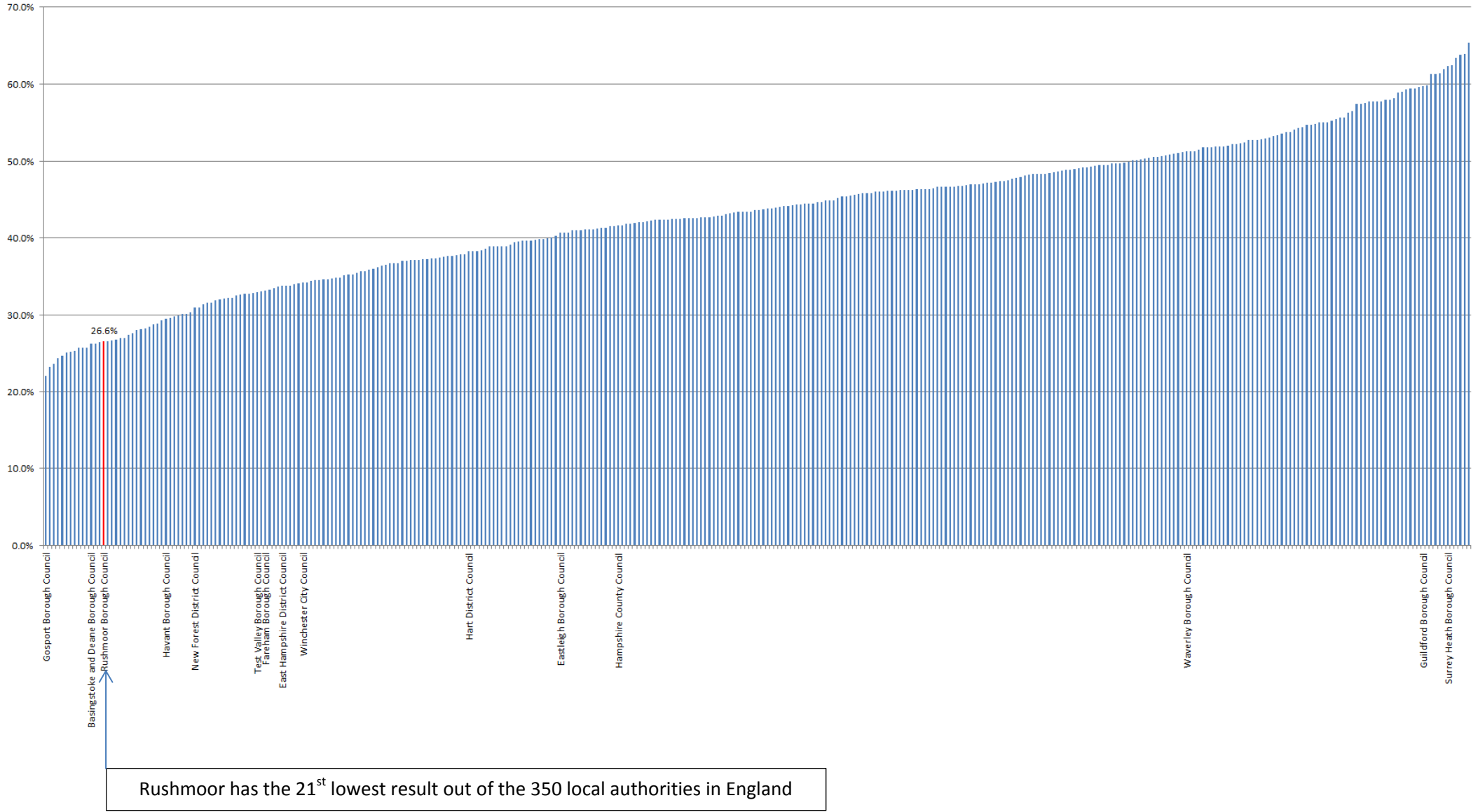
**Percentage recycled and composted each quarter**



### Recycling rates comparison

The following chart shows the percentage of waste sent for reuse, recycling or composting in 2016/17 for all authorities in England. At 26.6%, out of the 350 local authorities Rushmoor had the 21<sup>st</sup> lowest recycling rate. In 2015/16 at 25.9% Rushmoor had the 20<sup>th</sup> lowest result, in 2014/15 at 25.9% Rushmoor had the 18<sup>th</sup> lowest result and in 2013/14 at 25.5% Rushmoor had the 20<sup>th</sup> lowest result.

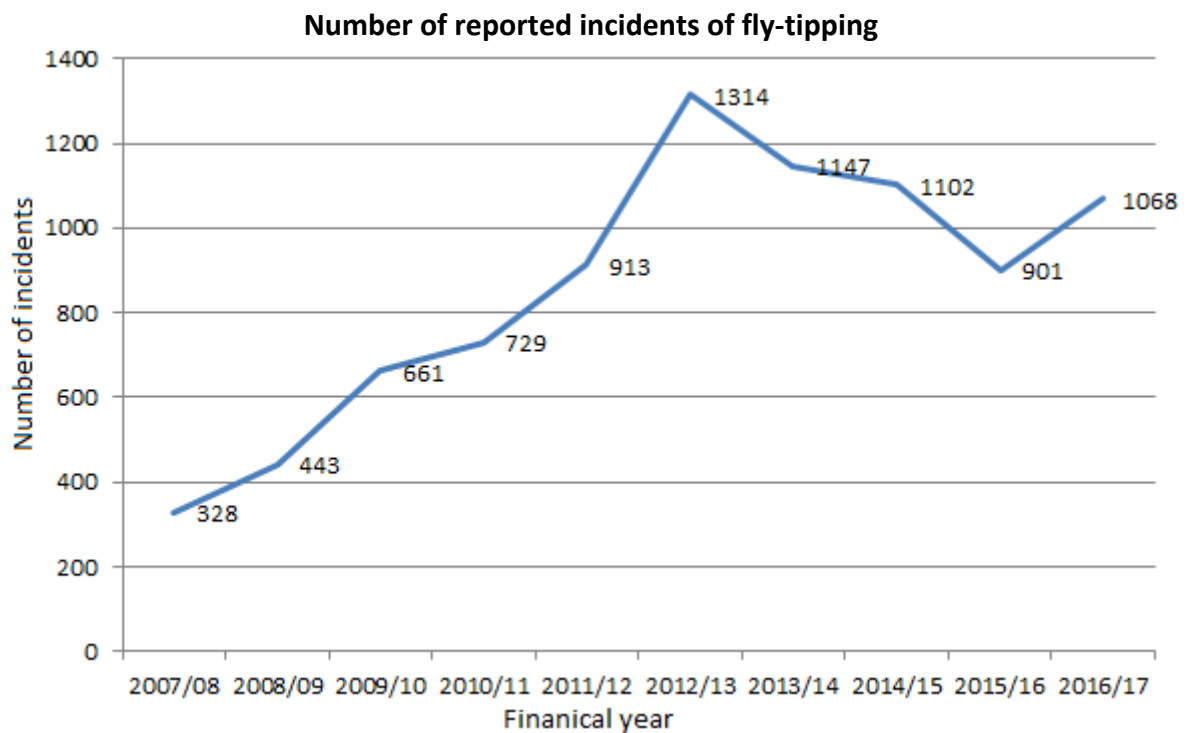
## The percentage of waste sent for reuse, recycling or composting in 2016/17 for all authorities in England



Source: Department for Environment, Food & Rural Affairs <https://www.gov.uk/government/statistical-data-sets/env18-local-authority-collected-waste-annual-results-tables>

## Fly tipping

The number of fly-tipping incidents reported by Rushmoor Borough Council to Defra in 2016/17 was 1068, which is a rise from 901 in 2015/16. 708 (66.3%) of incidents were related to household waste and 64.6% (690) of incidents were highway incidents. Over the last few years the number of locally reported incidents had been falling but this trend now appears to have stopped.



(Source: Defra <https://www.gov.uk/government/statistical-data-sets/env24-fly-tipping-incidents-and-actions-taken-in-england> )

## Love Rushmoor mobile app

The Love Rushmoor mobile app was launched in 2017 to make it easier to report environmental issues, like littering, graffiti and dumped shopping trolleys. The following can be reported using the Love Rushmoor app:

- Fly-tipping
- Dog fouling
- Litter
- Full litter bin
- Abandoned shopping trolleys
- Graffiti
- Dead animals
- Leaf build up

We will include time series data from the Love Rushmoor app when we have more data.

More information can be found on our website: <http://www.rushmoor.gov.uk/loverushmoor>