

# Businesses and employment data sheet

Last updated: November 2018

Produced by: Strategy, Performance and Partnerships

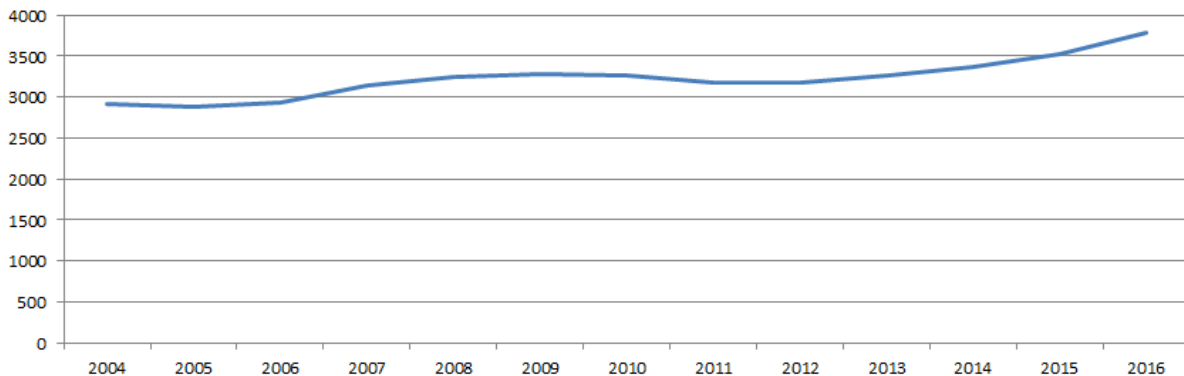
Contact: [policy@rushmoor.gov.uk](mailto:policy@rushmoor.gov.uk)

**Summary – Between 2011 and 2012 the number of active enterprises in Rushmoor dipped, maybe due to the recession. The number now are now rising. In 2016 there were more business births than deaths in Rushmoor, as was the case for England as a whole. In comparison Rushmoor has a lower percentage of micro units and a higher percentage of small, medium and large units, than Hampshire, the South East and Great Britain. Rushmoor has a higher percentage of full-time jobs and a higher percentage of jobs in information and communications than Hampshire, the South East and Great Britain.**

## Number of businesses

In 2016 there were 3,790 active enterprises (these are defined as businesses that had either turnover or employment at any time during the reference period). This is more than in 2015 (3,520 active enterprises) and in 2014 (3,370 active enterprises). The following table shows the count of active enterprises in Rushmoor over the past 10 years. There was a dip in the number in 2011 and 2012 possibly due to the recession but the number is now rising.

**Count of active enterprises in Rushmoor**



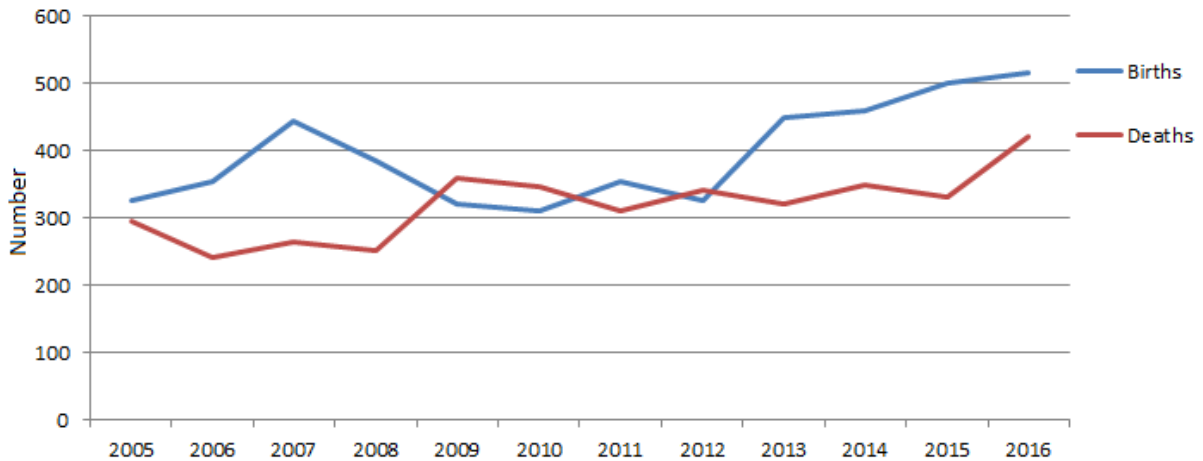
(Source: Office for National Statistics)

<https://www.ons.gov.uk/businessindustryandtrade/business/activitysizeandlocation/datasets/businessdemographyreferencetable> )

## Business births and deaths

In 2016 there were 13.2% (515) business births (as a proportion of all active enterprises) and 8.7% (420) deaths in Rushmoor. This means that there were more business births than business deaths.

### Business births and deaths in Rushmoor



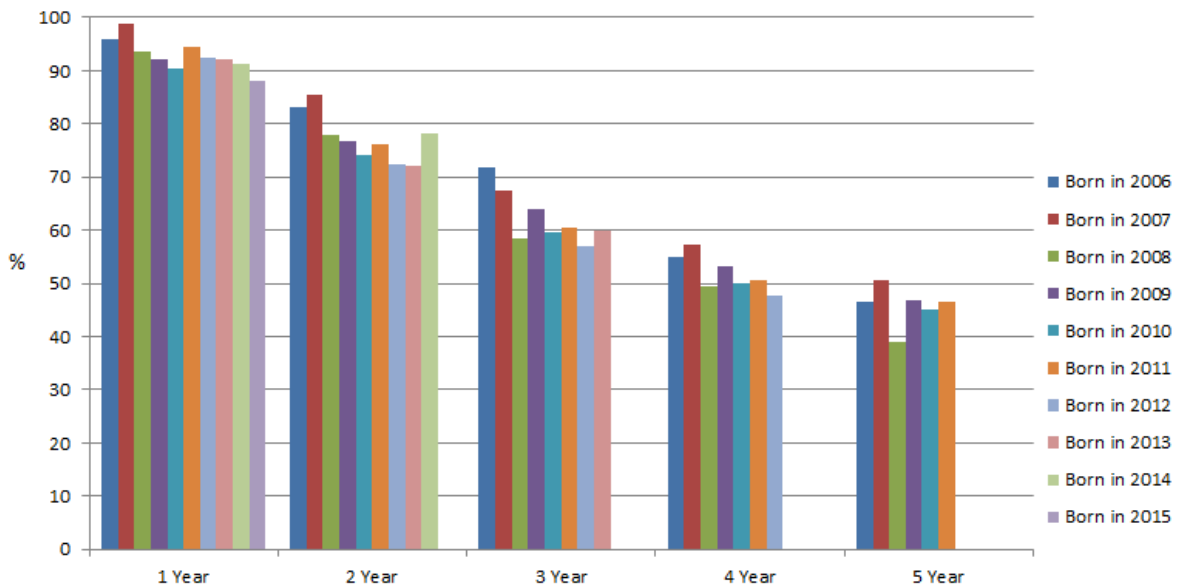
(Source: Office for National Statistics)

<https://www.ons.gov.uk/businessindustryandtrade/business/activitysizeandlocation/datasets/businessdemographyreferencetable> )

In England the rate of business births was 15.0% and the rate of business deaths was 11.7% (2016).

The table below shows the number of businesses still active in the years after their birth. The table indicates that business survival rates after one year are highest for businesses born in 2007. Business born in 2014 have the lowest survival rates after 3 and 4 years. Business born in 2008 have had the lowest survival rates after 5 years.

### % of businesses still active in the years after birth



(Source: Office for National Statistics)

<https://www.ons.gov.uk/businessindustryandtrade/business/activitysizeandlocation/datasets/businessdemographyreferencetable> )

## Number of units

In 2018 Rushmoor had 4,115 units. A unit is defined as an individual site such as a shop or a factory. The number of units in Rushmoor has decreased slightly from 4,125 in 2017. The following table shows the size of the units in Rushmoor. In comparison, Rushmoor has a lower percentage of micro units, and a higher percentage of small, medium and large units.

Unit size	Rushmoor number	Rushmoor (%)	Hampshire (%)	South East (%)	United Kingdom (%)
Micro (0 to 9 employees)	3,310	80.4%	84.6%	85.4%	84.3%
Small (10 to 49 employees)	435	15.4%	12.5%	11.9%	12.6%
Medium (50 to 249 employees)	140	3.4%	2.5%	2.4%	2.6%
Large (250+ employees)	30	0.7%	0.3%	0.3%	0.4%

(Source: Office for National Statistics NOMIS <https://www.nomisweb.co.uk/reports/lmp/la/2038431789/report.aspx?town=rushmoor>)

## Number of employee jobs in Rushmoor

In 2017 there were approximately 49,000 employee jobs in Rushmoor (employee jobs excludes self-employed, government-supported trainees and HM Forces). This is the same as in 2016. Of the employee jobs in Rushmoor, 69.4% of these were full time jobs and 30.6% were part time jobs. This was a higher percentage of full time jobs than in Hampshire, the South East and Great Britain.

Employee jobs 2017	Rushmoor (%)	Hampshire (%)	South East (%)	Great Britain (%)
Full-time	69.4%	65.0%	66.2%	67.5%
Part-time	30.6%	35.1%	33.8%	32.5%

(Source: Office for National Statistics NOMIS <https://www.nomisweb.co.uk/reports/lmp/la/2038431789/report.aspx?town=rushmoor>)

## Types of employment in Rushmoor

The table below shows the industries in Rushmoor, Hampshire, the South East and Great Britain.

Employee jobs by industry 2017	Rushmoor (number)	Rushmoor (%)	Hampshire (%)	South East (%)	Great Britain (%)
B : Mining and quarrying	0	0	0.1	0.0	0.2
C : Manufacturing	3,000	6.1	7.7	6.2	8.2
D : Electricity, gas, steam and air conditioning supply	200	0.4	0.4	0.5	0.5

E : Water supply; sewerage, waste management and remediation activities	600	1.2	0.8	0.8	0.7
F : Construction	2,250	4.6	6.4	5.5	4.8
G : Wholesale and retail trade; repair of motor vehicles and motorcycles	7,000	14.3	17.0	16.3	15.2
H : Transportation and storage	1,500	3.1	4.2	4.6	4.7
I : Accommodation and food service activities	3,000	6.1	7.7	7.3	7.5
J : Information and communication	7,000	14.3	5.9	5.9	4.4
K : Financial and insurance activities	1,500	3.1	2.9	2.8	3.5
L : Real estate activities	900	1.8	1.5	1.6	1.7
M : Professional, scientific and technical activities	5,000	10.2	7.9	8.0	8.4
N : Administrative and support service activities	6,000	12.2	8.1	8.7	9.1
O : Public administration and defence; compulsory social security	1,250	2.6	3.5	3.2	4.3
P : Education	3,500	7.1	9.4	10.4	8.9
Q : Human health and social work activities	3,500	7.1	11.3	12.7	13.3
R : Arts, entertainment and recreation	900	1.8	2.5	2.7	2.6
S : Other service activities	1,000	2.0	2.4	2.5	2.0

(Source: Office for National Statistics NOMIS <https://www.nomisweb.co.uk/reports/lmp/la/2038431789/report.aspx?town=rushmoor>)

The largest industries in Rushmoor are:

- 7,000 jobs - Information and communication – 8.4% more jobs than the Hampshire and the South East average, and 9.9% more jobs than the Great Britain average
- 7,000 jobs - Wholesale and retail trade; repair of motor vehicles and motorcycles – largest industry in Hampshire, South East and Great Britain
- 6,000 jobs - Administrative and support service activities – 4.1% more jobs in Rushmoor than the Hampshire average, 3.5% more jobs than the South East average and 3.1% more jobs than the Great Britain average.
- 5,000 jobs - Professional, scientific and technical activities – 2.3% more jobs in Rushmoor in than the Hampshire average, 2.2% more jobs than the South East average and 1.8% more jobs than the Great Britain average.

The table does not include self-employed, government-supported trainees and HM Forces.

Data from the Ministry of Defence shows that in October 2017 there were 2,890 military personnel and 380 civilian staff in Rushmoor.

(Source: Ministry of Defence <https://www.gov.uk/government/statistics/location-of-uk-regular-service-and-civilian-personnel-quarterly-statistics-2017>)

## Major private sector employers in Rushmoor

There are several large employers based in Rushmoor, which include many high technology, aerospace and defence related firms. The major private sector employers in 2015 are listed below:

Organisation	Employees	Activity description
AON Consulting	500	Insurance broker
Aramark (Farnborough) Ltd	2500	Event catering activities
BAE Systems Ltd	1000+	Development, delivery and support of advanced defence and aerospace systems
BMW UK	1,200	Finance
Fluor	500-1,000	Engineering and construction services, technology products and integrated solutions.
Hogg Robinson	400	Travel agency activities
Johnson Controls	200-500	Products and services to optimize energy and operational efficiencies of buildings, automotive batteries, electronics and interior systems for automobiles.
Lockheed Martin UK INSYS Limited	500-1,000	Systems Integrator and supplier of High Technology Systems and Services to Defence and Civil Government Customers
QinetiQ Holdings Ltd	1,000+	Aero, Defence & Security R&D
Qualcomm	200	Designer and supplier of CDMA chipsets, system software, network base stations, handsets, modems, kid trackers, camera phones, MP3 players, game players
Sodexo Defence Services	500-1,000	Defence Services
Triumph Structures (Acquisition of Primus International)	250+	Aerospace Components
Vector Aerospace	900	Aircraft Maintenance
Weston Aerospace	200-500	Repair and maintenance of aircraft and spacecraft
Zurich Insurance Company	1,000+	Insurance/Reinsurance

(Source: Hampshire County Council <http://www3.hants.gov.uk/factsandfigures/figures-economics/business-2.htm#section386179-4>)

## Major public sector employers in Rushmoor

There are three major public sector employers in Rushmoor:

- Farnborough College of Technology (700 employees)
- Rushmoor Borough Council (280 employees)
- Farnborough 6<sup>th</sup> Form College (250 employees)