

The Index of Multiple Deprivation 2015 data sheet

Last updated: February 2016

Produced by: Strategy, Performance and Partnerships

Contact: policy@rushmoor.gov.uk

Summary - Rushmoor has two small areas of multiple deprivation that are in the 20% most deprived in the country

The 2015 English Indices of Deprivation was published on September 30th 2015. The 2015 Index of Multiple Deprivation (IMD) combines a number of indicators chosen to cover a range of economic, social and housing issues into a single deprivation score for each small area in England. **Most of the indicator data has been taken from the 2012/13 tax year and some data is from the 2011 Census.** The indicators used for the Index of Multiple Deprivation 2015, can be found at the end of this Data Sheet.

The Indices of Deprivation have been produced at Lower-layer Super Output Area (LSOA) level of which in 2015 there were 32,844 in the country, with 58 LSOAs in Rushmoor. There are several in each ward, including many that overlap the ward boundaries. Each LSOA is ranked as part of the IMD against all other LSOAs in England, where 1 is the most deprived and 32,844 is the least deprived.

IMD 2015 Summary

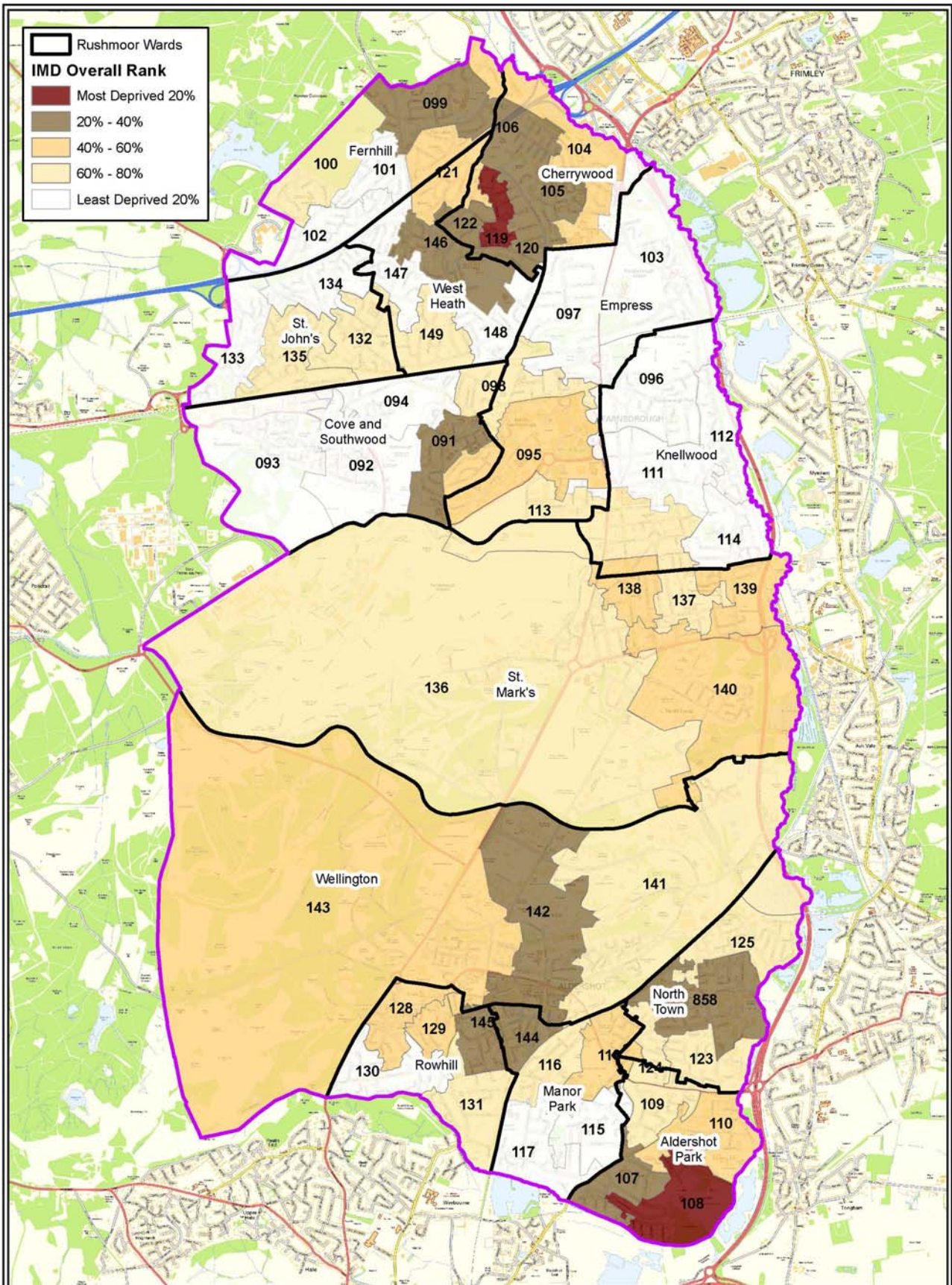
Rushmoor has two small areas of multiple deprivation – LSOAs that are in the 20% most deprived in the country:

- Part of Aldershot Park ward (**LSOA 108 ranked 4452**)
- Part of Cherrywood ward (**LSOA 119 ranked 4691**)

The indicators used and one of Rushmoor LSOAs have changed since the 2010 English Indices of Multiple Deprivation, **so the results are not directly comparable with previous releases.** However, in the 2010 English Indices of Multiple Deprivation Rushmoor had three small areas in the bottom 20% most deprived in England, LSOA 108 in Aldershot Park ward, LSOA 119 in Cherrywood ward and LSOA 126 in North Town ward. Due to the LSOA boundaries being redrawn after the 2011 Census, LSOA 126 merged with LSOA 125 and became LSOA 858. LSOA 858 is not in the 20% most deprived in England. Therefore there are currently no areas in the 20% most deprived in North Town ward.

Of the other areas 12 LSOAs are in the 40% most deprived, 11 LSOAs are in the middle 20%, 15 LSOAs are in 40% least deprived and 18 LSOAs are in the 20% least deprived areas in the country (see illustrative graph on page 3).

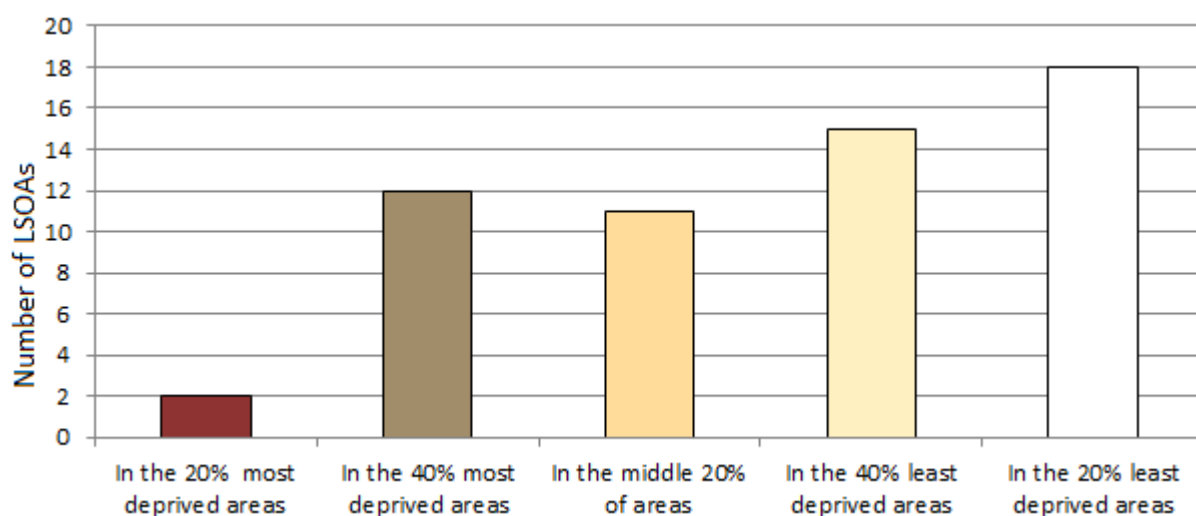
The map on the following page shows the LSOAs in Rushmoor. The darker the colour the more deprived the area.



Index of Multiple Deprivation 2015

Data Source: DCLG 2015
 © 2015 Rushmoor Borough Council
 © Crown copyright and database rights 2015 Ordnance Survey 100024264

Distribution of IMD in Rushmoor



Comparisons

In Hampshire there are 29 LSOAs in the 20% most deprived in the country, 18 in Havant, five in Gosport, two in the both New Forest and Rushmoor, one in both Eastleigh and Test Valley.

Around Rushmoor, Hart, Surrey Heath, and Waverley have no LSOAs in the 20% most deprived in the country. Guildford has one LSOA in in the 20% most deprived in the country.

Domain information

The table on the following page shows the scores for the individual LSOA in terms of the individual domains, which are:

- Income
- Employment
- Education, Skills and Training
- Health Deprivation and Disability
- Crime
- Barriers to Housing and Services
- Living Environment

The indicators used for the Index of Multiple Deprivation 2015 and the individual domains can be found at the end of this data sheet.

The Index of Multiple Deprivation 2015 - Scores for Lower Super Output Areas in Rushmoor across the domains - Key to table

In the 20% most deprived areas	In the 40% most deprived areas	In the middle 20% of areas	In the 40% least deprived areas	In the 20% least deprived areas					
Wards covered by LSOA and approx percentage	LSOA Code	Index of Multiple Deprivation	Income	Employment	Education, Skills & Training	Health Deprivation & Disability	Crime	Barriers to Housing & Services	Living Environment
Cove and Southwood (100%)	91	7,725	6,355	9,408	5,179	5,802	7,844	9,539	29,144
Cove and Southwood (100%)	92	31,924	31,851	32,027	26,213	26,651	26,365	19,608	31,870
Cove and Southwood (100%)	93	32,721	32,791	31,924	29,062	28,179	31,969	24,575	32,632
Cove and Southwood (100%)	94	29,135	28,668	30,406	18,188	27,836	18,910	19,400	27,525
Empress (80%) and Cove and Southwood (20%)	95	15,920	14,531	18,143	11,201	14,111	16,699	13,396	14,658
Knellwood (95%) and Empress (5%)	96	30,651	24,424	27,311	27,955	29,309	25,394	26,632	27,614
Empress (100%)	97	30,555	31,891	29,088	29,031	27,773	15,312	21,413	24,951
Empress (55%) and Cove and Southwood (45%)	98	22,270	20,249	25,638	19,134	23,463	7,630	21,112	18,273
Fernhill (100%)	99	12,811	10,868	13,844	6,335	11,896	13,618	14,403	28,097
Fernhill (100%)	100	22,971	24,817	26,668	13,792	16,696	11,522	23,207	21,175
Fernhill (100%)	101	29,742	31,067	26,698	21,868	23,940	27,475	19,458	26,214
Fernhill (100%)	102	29,657	29,586	29,223	16,520	25,895	22,958	23,282	30,843
Empress (95%) and Cherrywood (5%)	103	29,259	28,578	31,040	24,926	29,763	18,050	15,440	20,894
Cherrywood (90%) and Fernhill (10%)	104	16,616	13,534	23,100	9,441	24,458	13,964	5,904	21,848
Cherrywood (100%)	105	10,541	10,304	11,727	8,221	8,881	7,378	8,497	26,547
Cherrywood (85%) and Fernhill (15%)	106	11,847	11,336	14,903	5,389	9,679	16,977	9,823	21,281
Aldershot Park (100%)	107	8,022	9,088	7,984	4,055	2,403	15,505	20,429	27,305
Aldershot Park (100%)	108	4,452	6,314	4,165	2,013	2,024	9,874	8,718	29,670
Aldershot Park (100%)	109	20,628	19,347	19,765	15,800	18,747	8,290	30,346	22,506
Aldershot Park (100%)	110	13,208	14,147	15,038	8,131	10,420	9,634	11,010	25,056
Knellwood (100%)	111	28,634	26,355	27,442	27,015	24,191	27,545	11,748	27,526
Knellwood (100%)	112	32,013	31,216	30,369	25,252	26,937	27,806	26,170	29,579
Knellwood (95%) and Empress (5%)	113	20,779	21,396	16,645	24,652	13,451	18,709	13,342	24,620
Knellwood (100%)	114	31,182	29,711	28,764	25,423	23,352	24,977	28,757	29,507
Manor Park (90%) and Aldershot Park (10%)	115	28,340	28,500	25,918	22,447	19,410	16,200	30,612	27,423
Manor Park (100%)	116	20,226	16,044	22,687	21,465	16,882	10,887	21,018	17,266
Manor Park (100%)	117	30,886	28,799	29,900	23,177	26,131	20,458	31,098	27,519
Manor Park (80%) and North Town (10%) and Aldershot Park (10%)	118	18,732	17,030	23,685	18,926	16,811	6,770	18,710	14,427

Wards covered by LSOA and approx percentage	LSOA Code	Index of Multiple Deprivation	Income	Employment	Education, Skills & Training	Health Deprivation & Disability	Crime	Barriers to Housing & Services	Living Environment
Cherrywood (100%)	119	4,691	3,148	5,273	1,257	10,645	13,318	5,169	27,924
Cherrywood (100%)	120	9,505	7,178	10,520	3,362	12,215	9,610	17,557	27,144
Fernhill(45%) & WestHeath(45%) & Cherrywood(10%)	121	17,255	16,985	18,597	6,896	21,034	13,769	14,288	25,027
Cherrywood (80%) and West Heath (20%)	122	10,708	10,242	11,968	1,982	12,543	16,116	18,271	25,887
North Town (95%) and Aldershot Park (5%)	123	21,603	20,523	24,512	10,374	21,275	13,418	26,280	19,384
North Town (80%) and Aldershot Park (20%)	124	19,989	20,072	28,300	10,097	22,948	4,106	24,860	21,833
North Town (100%)	125	21,870	20,719	23,149	7,730	19,454	26,007	18,679	30,289
Rowhill (100%)	128	13,356	14,066	15,762	9,444	11,144	6,964	10,083	27,512
Rowhill (100%)	129	13,228	10,784	13,459	13,832	9,753	14,769	18,907	12,513
Rowhill (100%)	130	27,231	29,454	27,871	19,223	27,142	22,016	7,952	29,755
Rowhill (100%)	131	20,040	16,228	24,718	20,901	13,390	18,746	10,004	22,345
St. John (100%)	132	23,484	21,187	25,097	11,263	19,028	20,666	24,536	25,906
St. John (100%)	133	30,102	29,543	32,281	24,480	29,001	20,645	12,724	28,331
St. John (100%)	134	26,380	27,806	28,378	15,544	26,729	23,371	11,446	21,814
St. John (100%)	135	20,063	19,577	20,188	8,035	23,465	23,701	12,530	26,050
St Marks (100%)	136	25,976	26,752	28,348	18,059	16,241	24,576	22,362	16,727
St Marks (100%)	137	22,002	24,476	20,080	15,895	17,495	11,880	28,231	18,161
St Marks (80%) and Knellwood (20%)	138	17,550	18,205	13,141	22,080	10,102	17,773	21,557	16,212
St Marks (100%)	139	15,725	14,425	17,099	11,639	10,250	18,238	17,701	16,209
St Marks (100%)	140	16,902	16,338	22,579	9,086	11,504	24,978	10,018	18,213
Wellington (100%)	141	22,994	31,309	32,308	9,595	19,031	24,191	3,669	30,323
Wellington (100%)	142	9,131	4,786	15,594	9,654	10,010	8,317	8,238	14,856
Wellington (95%) and Rowhill (5%)	143	17,160	22,787	23,418	8,984	9,745	12,096	10,685	21,138
Manor Park (95%) and Wellington (5%)	144	10,653	8,779	16,463	9,600	13,374	7,364	15,806	4,399
Rowhill(80%) & Wellington(10%) & Manor Park(10%)	145	8,977	8,522	14,982	13,192	6,493	1,864	16,300	8,742
West Heath (100%)	146	12,762	11,271	14,745	4,623	12,859	12,193	15,428	30,571
West Heath (100%)	147	26,713	23,043	25,590	15,898	25,267	16,958	28,326	29,465
West Heath (100%)	148	27,561	23,735	28,856	22,608	25,569	14,256	26,993	20,805
West Heath (100%)	149	24,685	25,845	22,300	16,303	16,824	16,669	27,867	26,167
North Town (100%)	858	10,747	9,041	12,603	4,533	8,263	13,161	18,181	24,219
Number in 20% most deprived		2	4	2	10	4	2	3	1
Number in 20% least deprived		18	17	20	4	10	5	10	24

Areas with specific challenges

The Index of Multiple Deprivation is divided into seven indicator domains. The table below compares the areas in Rushmoor with specific domain challenges in 2010 and 2015. These areas are in the 20% most deprived for the domains in England – LSOAs in bold are those that also have multiple deprivation.

Deprivation Domain	Lower Super Output Areas 2010		Lower Super Output Areas 2015
Income	4 pockets <ul style="list-style-type: none"> • 126 (North Town) • 119 (Cherrywood) • 108 (Aldershot Park) • 91 (Cove and Southwood) 	As the indicators changed from the 2010 to the 2015 Indices these domains are not comparable	4 pockets <ul style="list-style-type: none"> • 119 (Cherrywood) • 142 (Wellington) • 108 (Aldershot Park) • 91 (Cove and Southwood)
Employment	3 pockets <ul style="list-style-type: none"> • 126 (North Town) • 119 (Cherrywood) • 108 (Aldershot Park) 		2 pockets <ul style="list-style-type: none"> • 108 (Aldershot Park) • 119 (Cherrywood)
Education, Skills and Training	9 pockets <ul style="list-style-type: none"> • 126 (North Town) • 119 (Cherrywood) • 105 (Cherrywood) • 120 (Cherrywood) • 122 (Cherrywood and small part of West Heath) • 108 (Aldershot Park) • 107 (Aldershot Park) • 110 (Aldershot Park) • 146 (West Heath) 		10 pockets <ul style="list-style-type: none"> • 119 (Cherrywood) • 122 (Cherrywood and small part of Westheath) • 108 (Aldershot Park) • 120 (Cherrywood) • 107 (Aldershot Park) • 858 (North Town) • 146 (West Heath) • 91 (Cove and Southwood) • 106 (Cherrywood and a small part of Fernhill) • 99 (Fernhill)
Barriers to Housing and Services	1 pocket <ul style="list-style-type: none"> • 139 (St Marks) 		3 pockets <ul style="list-style-type: none"> • 141 (Wellington) • 119 (Cherrywood) • 104 (Cherrywood and a small part of Fernhill)
Living Environment	No pockets		1 pocket <ul style="list-style-type: none"> • 144 (Manor Park and a small part of Wellington)
Health and Disability	5 pockets <ul style="list-style-type: none"> • 126 (North Town) • 119 (Cherrywood) • 108 (Aldershot Park) • 107 (Aldershot Park) • 138 (St Marks and small part of Knellwood) 		These domains are comparable as the indicators haven't changed
Crime	2 pockets <ul style="list-style-type: none"> • 144 (Manor Park and small part of Wellington) • 145 (Rowhill and small part of Wellington and Manor Park) 	2 pockets <ul style="list-style-type: none"> • 145 (Rowhill and small part of Wellington and Manor Park) • 124 (North Town and a small part of Aldershot Park) 	

Indicators used for the Index of Multiple Deprivation 2015

Domains and weighting	Indicators
Income Deprivation 22.5%	<ul style="list-style-type: none"> • Adults and children in Income Support families • Adults and children in income-based Jobseeker's Allowance families • Adults and children in income-based Employment and Support Allowance families • Adults and children in Pension Credit (Guarantee) families • Adults and children in Child Tax Credit and Working Tax Credit families, below 60% median income not already counted • Asylum seekers in England in receipt of subsistence support, accommodation support, or both
Employment Deprivation 22.5%	<ul style="list-style-type: none"> • Claimants of Jobseeker's Allowance, aged 18-59/64 • Claimants of Employment and Support Allowance, aged 18-59/64 • Claimants of Incapacity Benefit, aged 18-59/64 • Claimants of Severe Disablement Allowance, aged 18-59/64 • Claimants of Carer's Allowance, aged 18-59/64
Health Deprivation & Disability 13.5%	<ul style="list-style-type: none"> • Years of potential life lost • Comparative illness and disability ratio • Acute morbidity • Mood and anxiety disorders
Education, Skills & Training Deprivation 13.5%	<ul style="list-style-type: none"> • Key stage 2 attainment: average points score • Key stage 4 attainment: average points score • Secondary school absence • Staying on in education post 16 • Entry to higher education • Adults with no or low qualifications, aged 25-59/64 • English language proficiency, aged 25-59/64
Crime 9.3%	<p>Recorded crime rates for:</p> <ul style="list-style-type: none"> • Violence • Burglary • Theft • Criminal damage
Barriers to Housing & Services 9.3%	<ul style="list-style-type: none"> • Road distance to: post office; primary school; general store or supermarket; GP surgery • Household overcrowding • Homelessness • Housing affordability
Living Environment Deprivation 9.3%	<ul style="list-style-type: none"> • Housing in poor condition • Houses without central heating • Air quality • Road traffic accidents

More Information

The Index of Multiple Deprivation 2015 information is published on the Government website:
<https://www.gov.uk/government/statistics/english-indices-of-deprivation-2015>