

Unemployment and benefits data sheet

Last updated: October 2018

Produced by: Strategy, Performance and Partnerships

Contact: policy@rushmoor.gov.uk

Summary – The take up of benefits issued by Rushmoor and the Department of Work and Pensions show the trend in numbers on benefits is reducing. Universal Credit will replace most means-tested benefits and tax credits and will include payments for children and housing costs and applied to Rushmoor residents since February 2016.

Universal Credit

Universal Credit is a new benefit for people on a low income or out of work, who are below pension age. The government is phasing it in nationally between February 2015 and 2019. It was introduced in Rushmoor in February 2016. The following shows the number of people on Universal Credit in Rushmoor at the end of each financial quarter since the introduction of Universal Credit.

Universal Credit	Not in employment	In employment	Total
March 2016	24	11	29
June 2016	56	61	121
September 2016	111	96	204
December 2016	122	121	242
March 2017	164	111	277
June 2017	171	114	287
September 2017	153	156	315
December 2018	157	174	331
March 2018	167	129	300
June 2018	177	95	265
September 2018	163	86	252

(Source: Department for Work & Pensions <https://stat-xplore.dwp.gov.uk/>)

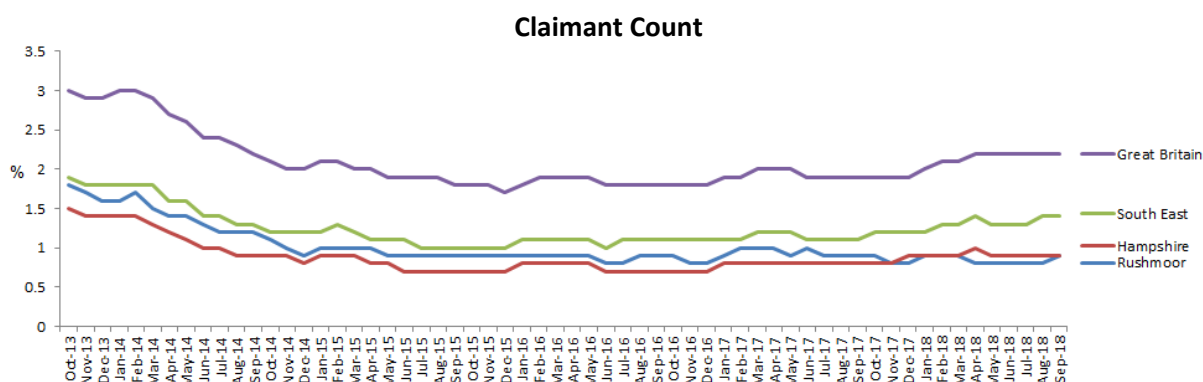
Universal Credit will replace most means-tested benefits and tax credits and will include payments for children and housing costs. The official labour market statistics website (NOMIS) now reports out-of-work Claimant Counts (experimental statistics) instead of Job Seeker Allowance (JSA).

“The Claimant Count is the number of people claiming benefit principally for the reason of being unemployed. This is measured by combining the number of people claiming Jobseeker's Allowance (JSA) and National Insurance credits with the number of people receiving Universal Credit principally for the reason of being unemployed”

Source: Office for National Statistics

Claimant Count analysis

In September 2018 there were 545 Rushmoor residents claiming out-of-work benefits principally for the reason of being unemployed, this represents 0.9% of Rushmoor's working age population (16-64). This was a lower percentage than Hampshire (0.9%), the South East (1.4%) and Great Britain (2.2%) . The following chart sets out the claimants as a percentage of the working age population.



(Source: Office for National Statistics NOMIS <https://www.nomisweb.co.uk/reports/lmp/la/2038431789/report.aspx?town=rushmoor>)

The following table shows the number of people claiming out-of-work benefits principally for the reason of being unemployed in each ward in September 2018 and the percentage of claimants as a proportion of the population.

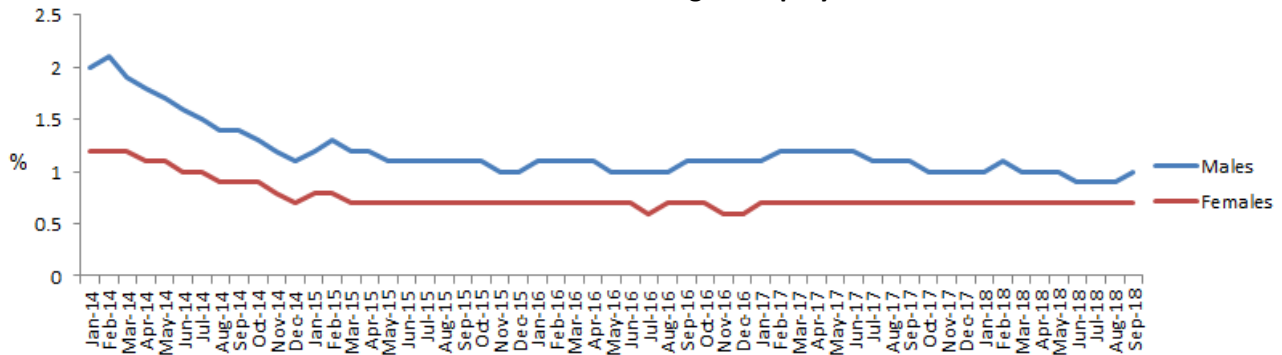
Ward (Note the wards used are our old wards)	Claimant count aged 16-64 (% of population aged 16-64)
Cove and Southwood	20 (0.5%)
Empress	35 (0.7%)
Fernhill	20 (0.6%)
Grange	30 (0.7%)
Heron Wood	45 (1.2%)
Knellwood	20 (0.5%)
Manor Park	40 (0.8%)
Mayfield	65 (1.5%)
North Town	40 (0.8%)
Rowhill	40 (1.1%)
St. John's	35 (0.8%)
St Mark's	30 (0.5%)
Wellington	90 (1.1%)
West Heath	35 (1.0%)
Rushmoor	545 (0.9%)

(Source: Office for National Statistics <http://www.nomisweb.co.uk/reports/lmp/ward2011/contents.aspx>)

There are five wards (our old wards) that have a higher percentage of claimants than the Rushmoor average (0.8%). The wards are Heron Wood ward (1.2%), Mayfield ward (1.5%), Rowhill ward (1.1%), Wellington ward (1.1%) and West Heath ward (1.0%).

The following chart shows the percentage of males and females claiming out-of-work benefits principally for the reason of being unemployed.

Percentage of Rushmoor Males and Females (aged 16-64) claiming out-of-work benefits principally for the reason of being unemployed



(Source: Office for National Statistics)

http://www.nomisweb.co.uk/reports/lmp/la/2038431789/subreports/jsa_time_series/report.aspx?

Claimant count by age

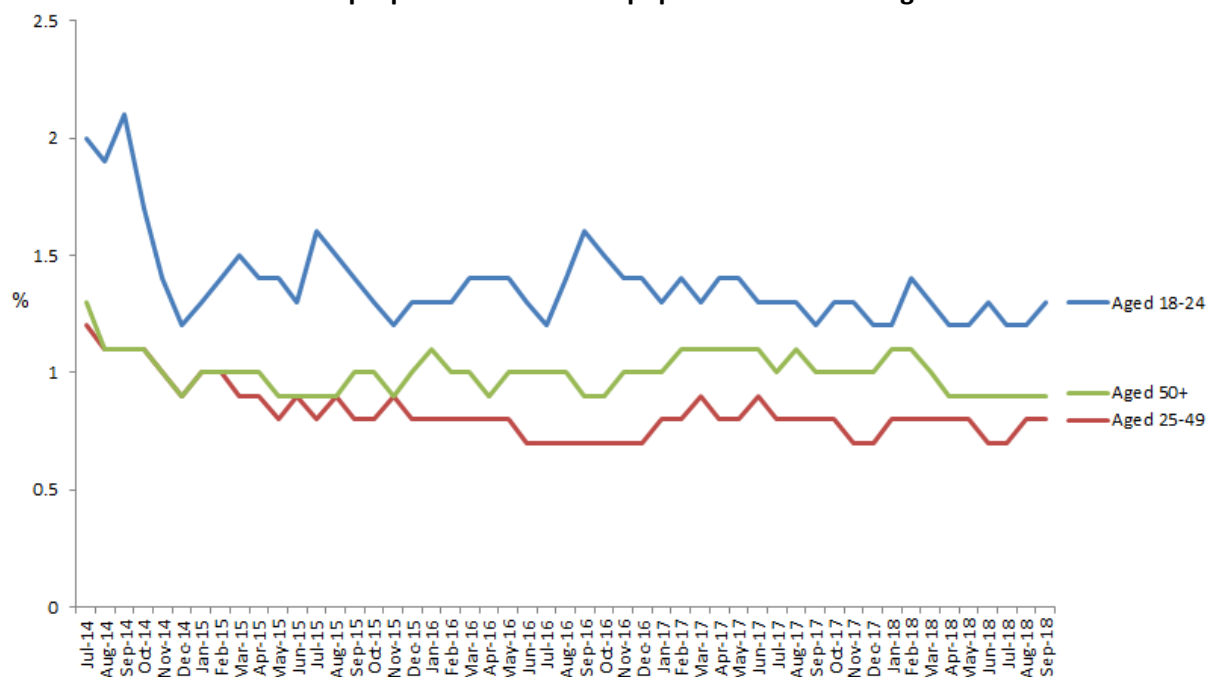
The following table shows the age of residents claiming out-of-work benefits principally for the reason of being unemployed in Rushmoor. In September 2018, 1.3% of 18-24 years old were claiming. This was a lower percentage than Hampshire (1.5%), the South East (1.9%) and Great Britain as a whole (3.1%).

Claimant Count by age September 2018	Number in Rushmoor	Claimants as a percentage of total age group in area			
		Rushmoor	Hampshire	South East	Great Britain
Aged 18-24	100	1.3%	1.5%	1.9%	3.1%
Aged 25-49	280	0.8%	0.9%	1.4%	2.3%
Aged 50-64	160	0.9%	0.8%	1.3%	2.0%

(Source: Office for National Statistics NOMIS <https://www.nomisweb.co.uk/reports/lmp/la/2038431789/report.aspx?town=rushmoor>)

The following graph shows the percentage of residents claiming out-of-work benefits principally for the reason of being unemployed in Rushmoor as the percentage of the total population of each age group in Rushmoor, over the last three years.

Percentage residents claiming out-of-work benefits principally for the reason of being unemployed as a proportion of resident population the same age



(Source: Office for National Statistics NOMIS <https://www.nomisweb.co.uk/reports/lmp/la/2038431789/report.aspx?town=rushmoor>)

Model based unemployment

Not everyone who is unemployed is entitled to claim out of work benefits, the Office for National Statistics (ONS) Annual Population Survey estimates the percentage of the working age population who are unemployed. It should be noted that this is model based and the ONS Annual Population Survey base the data on a small sample of people in the area.

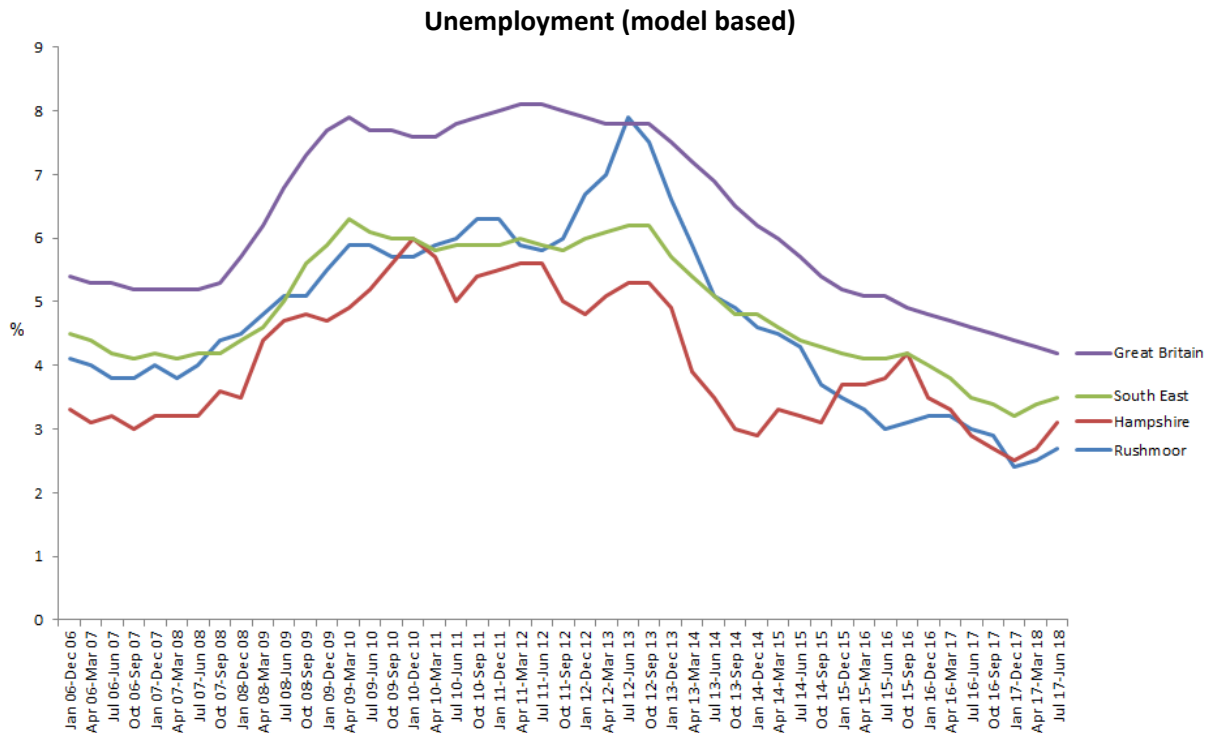
This data estimates that there are 1,500 people unemployed in Rushmoor (2.7% of the economically active population).

The following table shows the unemployment rate in Rushmoor, Hampshire, the South East and Great Britain. Rushmoor has a lower rate than Hampshire, the South East and Great Britain.

July 2017-June 2018	Rushmoor	Hampshire	South East	Great Britain
Unemployed (Model Based)	2.7% (1,500)	3.1%	3.5%	4.2%

(Source: Office for National Statistics NOMIS http://www.nomisweb.co.uk/reports/lmp/la/2038431789/subreports/jsa_time_series/report.aspx?)

The following chart shows the unemployment rate over time.

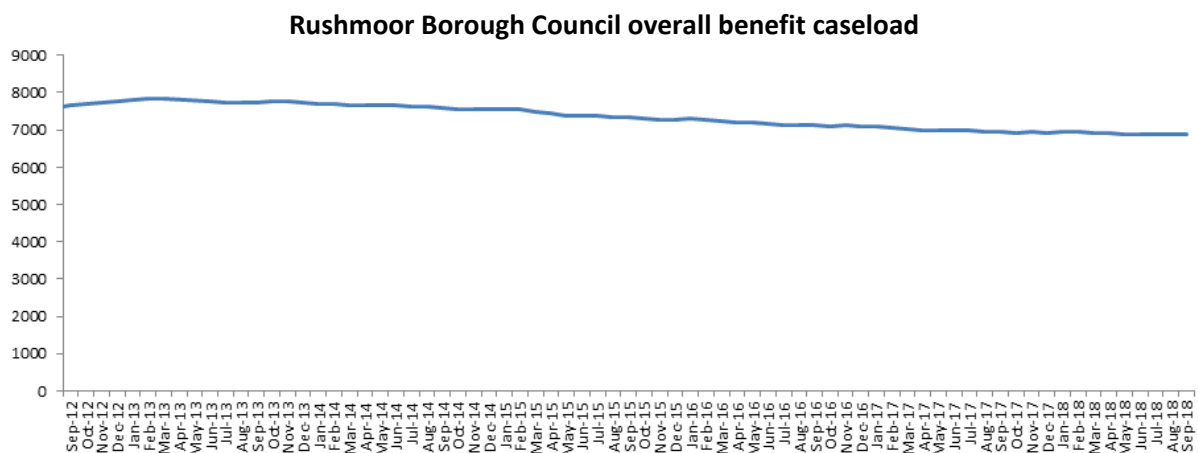


(Source: Office for National Statistics NOMIS)

http://www.nomisweb.co.uk/reports/lmp/la/2038431789/subreports/jsa_time_series/report.aspx?

Housing and Council Tax Benefit take up

Rushmoor Borough Council is responsible for Council Tax Support (CTS) and local Housing Allowance. There were 6,893 claimants in September 2018, a decrease of 49 from September 2017. There were 7,129 claimants in September 2016. The following chart shows an increase until February 2013, then the numbers have declined.



(Source: Rushmoor Borough Council)

The number of residents claiming CTS has decreased by 1.3% (62) from September 2017, during the same period the number of claimants receiving only Housing Benefit has reduced by 0.6% (13).