

Population data sheet

Last updated: June 2018

Produced by: Strategy, Performance and Partnerships

Contact: policy@rushmoor.gov.uk

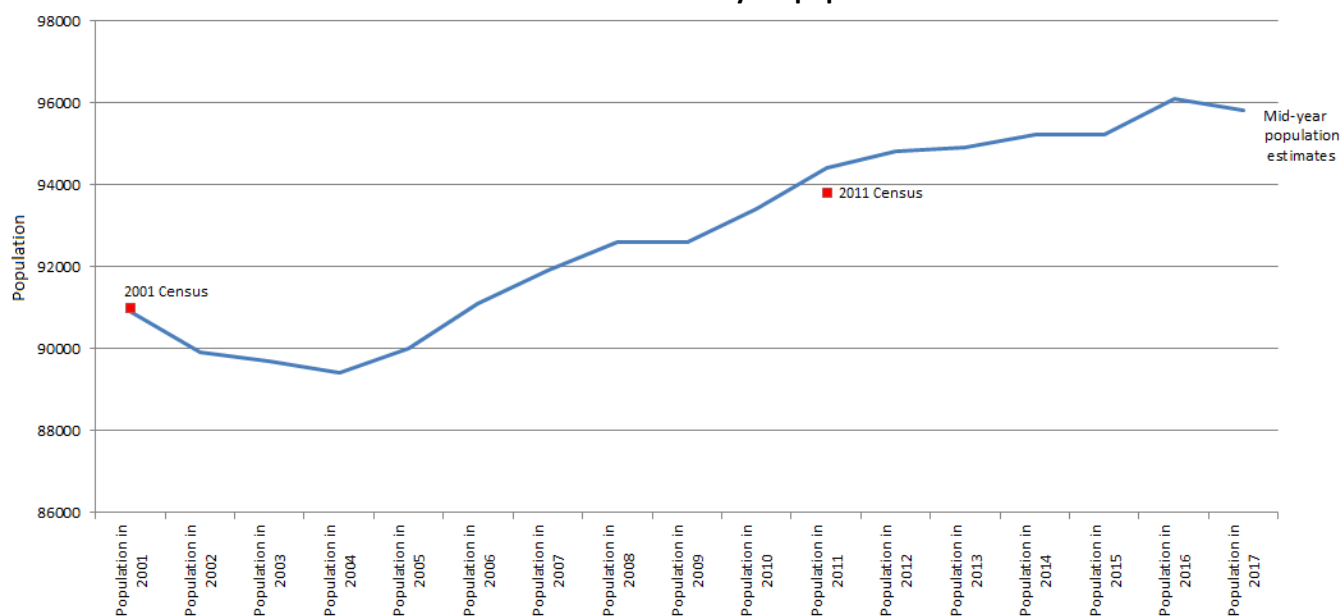
Summary: According to the 2017 mid-year population estimate, Rushmoor has a population of 95,800. This is a fall from 96,100 in 2016.

The 2017 mid-year population estimate for Rushmoor from the Office for National Statistics is 95,800. The mid-year population figure is data at a local authority area level, for smaller areas such as towns and wards the 2011 Census information is the most up to date.

Census and mid-year population estimates

The population of Rushmoor in the 2001 Census was 91,000, this increased 3.1% to 93,800 in the 2011 Census. The chart below shows data from the last two Censuses and the mid-year population estimates for the in-between years. The data shows a drop in the population from the 2001 Census, to the 2004 mid-year population figure, then a rise of over 7.4% through to 2016. There was a small drop of 300 people from 2016 to 2017.

Data from the Censuses and the mid-year population estimates

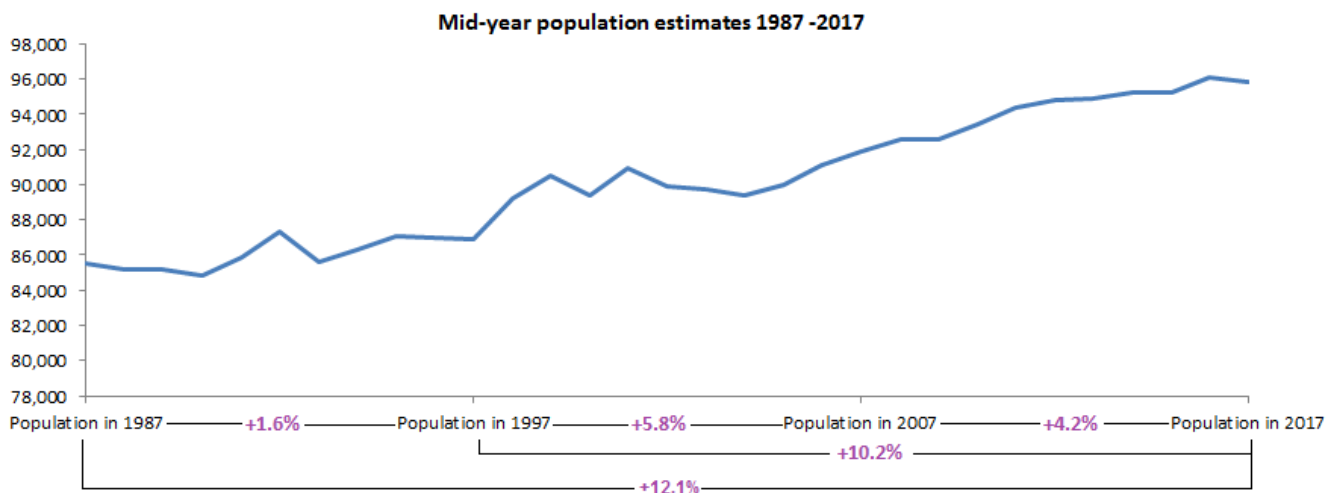


(Source: ONS mid year population estimates)

<https://www.ons.gov.uk/peoplepopulationandcommunity/populationandmigration/populationestimates/datasets/populationestimatesforukenglandandwalesscotlandandnorthernireland>

Population over the last 30 years

The mid-year population estimates are available for the last 30 years. The following chart shows the percentage increase of the population of Rushmoor over the last 30 years. The population has increased by 12.1% since 1987 where the population was 85,500, and increased 10.2% since 1997 where the population was 86,900, and increased 4.2% since 2007 where the population was 91,900.

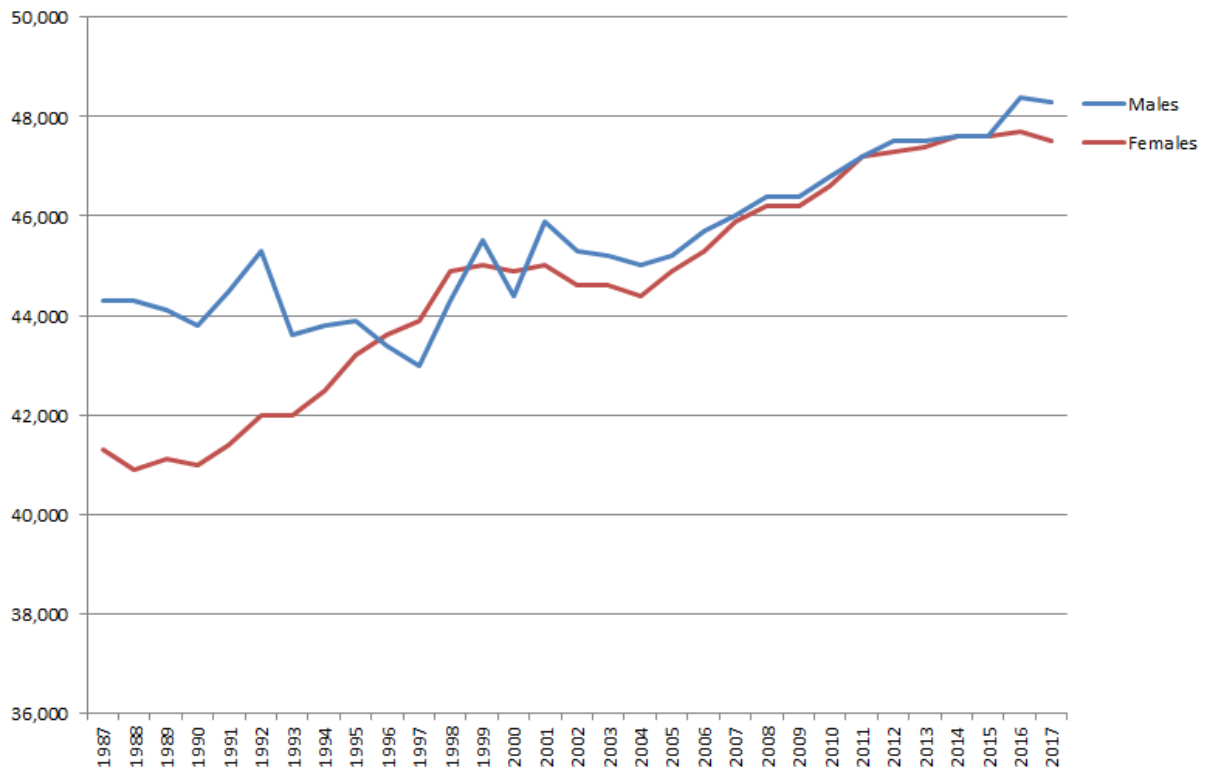


(Source: NOMIS <http://www.nomisweb.co.uk/reports/lmp/la/2038431789/report.aspx?town=rushmoor> and ONS mid year population estimates <https://www.ons.gov.uk/peoplepopulationandcommunity/populationandmigration/populationestimates/datasets/populationestimatesforukenglandandwalesscotlandandnorthernireland>)

Population of males and females over the last 30 years

The mid-year population estimates also breaks the population down by males and females. The following chart shows the number of males and females over the past 30 years. There used to be more males than females from 1987 to 1995, then the numbers of males and females became more in line with each other. The 2017 data shows there are about a 800 more males than females. In the population of England overall there are slightly more females than males, which may suggest the larger male population is due to the Army presence in the borough.

Rushmoor's male and female population over the last 30 years



(Source: NOMIS <http://www.nomisweb.co.uk/reports/lmp/la/2038431789/report.aspx?town=rushmoor> and ONS mid year population estimates <https://www.ons.gov.uk/peoplepopulationandcommunity/populationandmigration/populationestimates/datasets/populationestimatesforukenglandandwalesscotlandandnorthernireland>)

Population of Aldershot and Farnborough

The 2011 Census shows the population of Farnborough to be 57,500, and Aldershot to be 36,300. (rounded to the nearest 100). The following table shows the population estimates in Aldershot and Farnborough from the 2001 and 2011.

	2001 census	2011 census	Population increase
	Population	Population	
Aldershot	33,840	36,321	7.3%
Farnborough	57,147	57,486	0.6%
Total	90,987	93,807	3.1%

Aldershot has shown the largest population increase in the last 10 years.

Population in our wards

The following table shows the population estimates in our wards from the 2001 and 2011 Census. The largest increase in population has been in Wellington ward.

	2001 census	2011 census	% change
	Population	Population	
Aldershot Park	7,453	7,298	-2.1
Cherrywood	8,017	8,196	2.2
Cove and Southwood	8,072	7,349	-9.0
Empress	4,614	5,567	20.7
Fernhill	7,819	7,390	-5.5
Knellwood	7,521	7,280	-3.2
Manor Park	7,478	8,565	14.5
North Town	6,403	6,685	4.4
Rowhill	7,224	6,925	-4.1
St. John's	6,565	7,143	8.8
St. Mark's	6,939	7,327	5.6
Wellington	5,282	6,848	29.6
West Heath	7,600	7,234	-4.8
Total	90,987	93,807	3.1%

Population density

The 2011 Census shows the population density of Rushmoor to be 24.0 people per hectare. This is an increase from 23.3 in 2001. As Rushmoor is an urban area this high population density is to be expected. The population density of Hampshire was 3.6, the South East was 4.5 and in England was 4.1 in 2011.

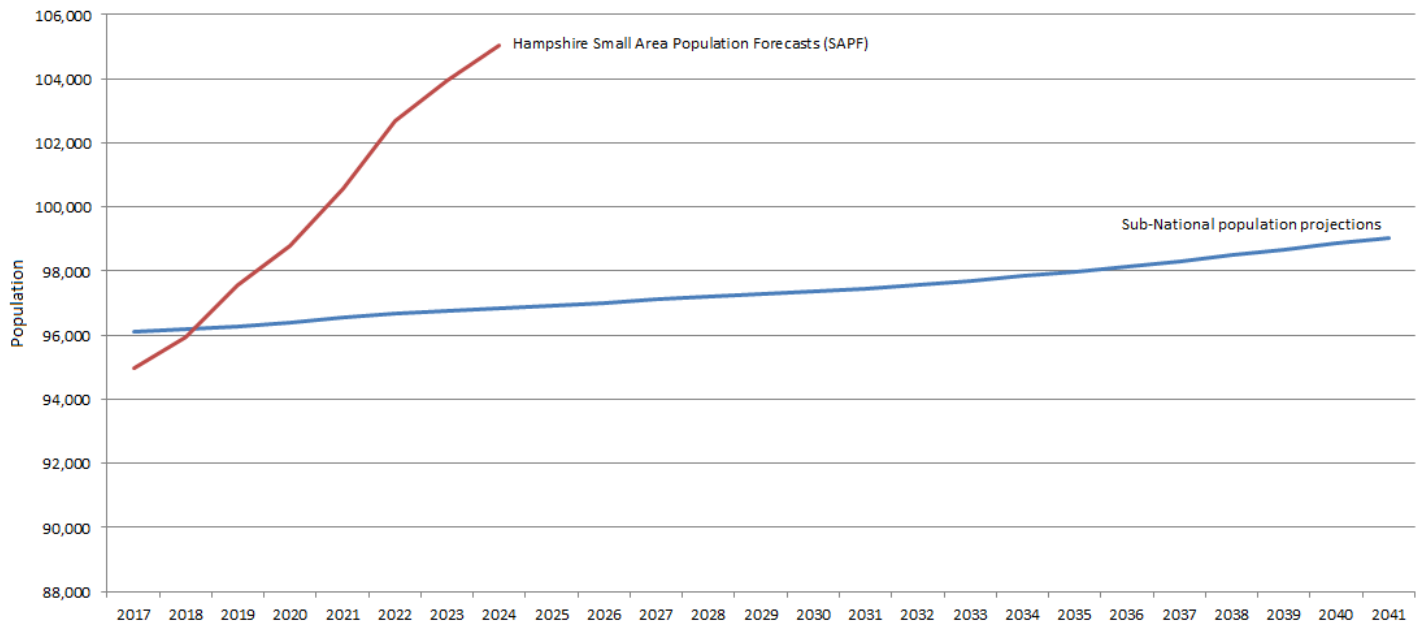
Future population projections

The Office for National Statistics produces Sub-National Population Projections (SNPP). The current 2016 figures project the population to 2041. The projections are not forecasts and do not take any account of future government policies, changing economic circumstances or the capacity of an area to accommodate the change in population.

Hampshire County Council produces the Small Area Population Forecasts (SAPF). The forecasts are based on future dwellings supply. The dwelling supply information for the period 2017 to 2024 includes all large and small sites with planning permission, or allocated in local plans as at April 1st 2017.

The following chart shows the 2016 Sub-National population projections and the 2017 Small Area Population Forecasts. As the methodology is different for the two sets of figures they are not directly comparable.

Population projections and forecasts for Rushmoor



(Source: ONS Sub-nation population projects

<https://www.ons.gov.uk/peoplepopulationandcommunity/populationandmigration/populationprojections/datasets/localauthoritiesinenglandz1> and Hampshire County Council

<http://www3.hants.gov.uk/factsandfigures/population-statistics/pop-estimates/small-area-pop-stats.htm>)

The Sub-National Population Projections figures project Rushmoor's population to reach 99,045 by 2041 and the Small Area Population Forecast figures forecast the population in Rushmoor to reach 105,039 by 2024.